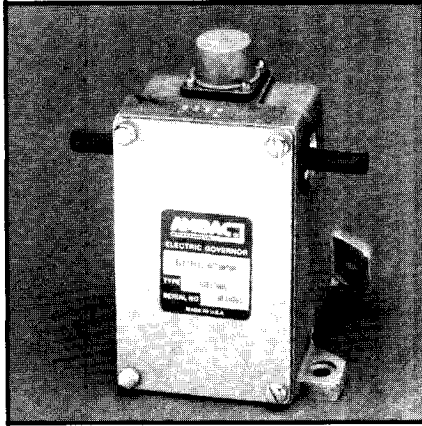
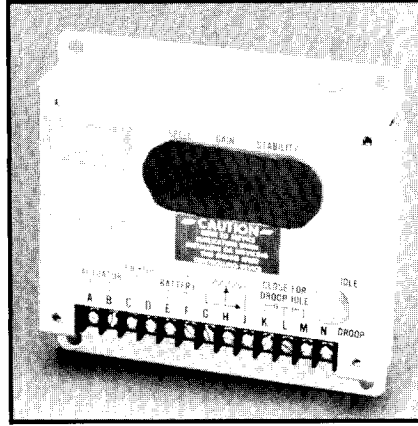


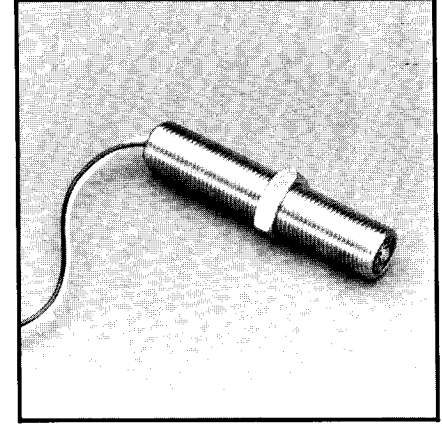
0.1 Joule Governing System



Actuator
AGB 130



Controller
ECD 67-2110



Speed Sensor
MP 675

Features:

- For 12V, 24V or 32VDC Power Supply.
- 0.1 Joule of work output to control the Engine Fuel Injection Pump or Carburetor.
- Isochronous or Droop Operation.
- Controller will move to shut-off position in case of loss of signal.
- Controls in-line Diesel Fuel Injection Pumps having no mechanical governor.
- Controls Rotary Diesel Fuel Injection Pumps.
- Millisecond Response Time.
- Maintenance Not Required.

The AMBAC 0.1 Joule Electric Speed Control System consists of a magnetic speed sensor, a solid state electronic Control Unit and an actuator to regulate the fuel injection pump delivery or to position the carburetor throttle. The actuator and a variety of controllers are designed for compatible operation with each other to govern diesel, gasoline or natural gas engines. The system offers isochronous or droop control of engines found in off-highway equipment, generator sets and industrial engine applications.

The 0.1 Joule Governing System can be expanded for a wide variety of specialized control applications by adding one or more accessory modules and by using an alternate controller.

Typical accessories are those which provide crank termination, overspeed signals, synchronization with a bus and load sharing.

Magnetic speed sensors are available in various lengths and types with wire leads or shielded cable.

The AGB 130 type actuators have work outputs of 0.1 Joule; 15° cw/ccw rotation and are used with diesel fuel injection pumps requiring up to 1.0 lb.f.-ft. torque to move the rack or operating lever.

The solid state controller receives signals, proportional to engine speed, from the magnetic sensor. Any change in engine speed is countered by a change in current to the actuator.

The change in current causes the actuator armature to assume a position which increases or decreases the amount of fuel delivered by the fuel injection pump or carburetor.

The AGB 130 Series actuators are an ideal choice to govern engines using distributor type fuel injection pumps such as Stanadyne and CAV.

General Specifications:

AGB 130 Actuator

Work

0.1 Joule (.07 ft-lbs.)

Torque

1.0 lb. ft.

Angle of Rotation

15° CW or CCW

Response Time

45 milliseconds

Weight

1.47 kg (3.25 lbs.)

Max Operating Current

6A at 12 VDC

Typical Operating Current

2A at 12 VDC

Case Finish

Fungus Proof
Corrosion Resistant

Operating Temperature Range

-54° to +95°C (-65°F to 200°F)

Mounting Position

Any

Electrical Connector

6 pin, type MS3106R14S-6S

ECD 67-2000 Controller

Operating Mode

Isochronous or Droop

Steady-State Stability

±0.25%

Frequency Range

1K to 6K Hertz

Power Supply

12V to 30 VDC

Power Consumption

60 mA plus actuator current

Input Signal

1.0 to 30.0 volts rms

Operating Temperature Range

-40°C to 85°C (-40°F to 185°F)

Relative Humidity

Up to 100%

Case Finish

Fungus Proof
Corrosion Resistant

Speed Trim Range

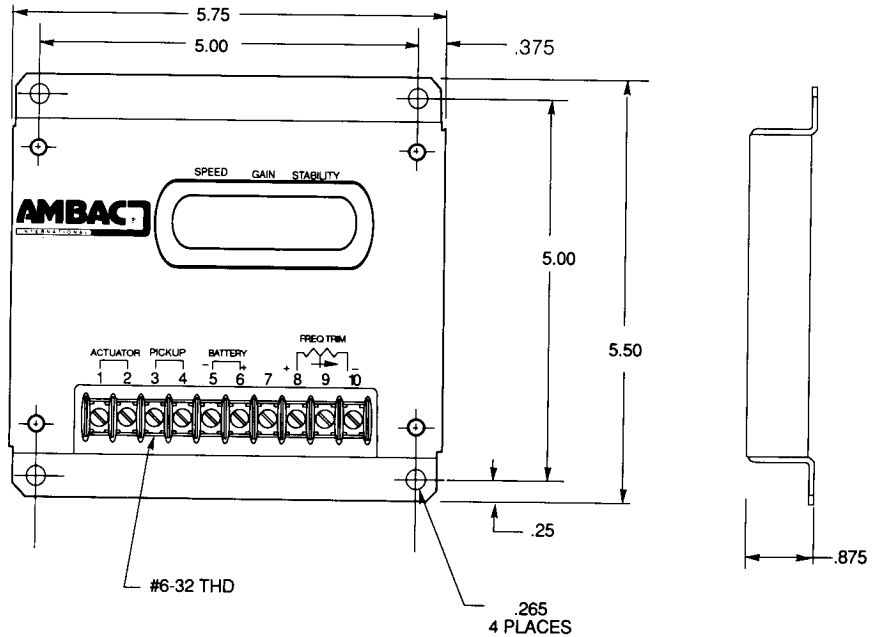
Standard: ±400 Hz
Optional: ±5K Hz

Available Options and Accessories:

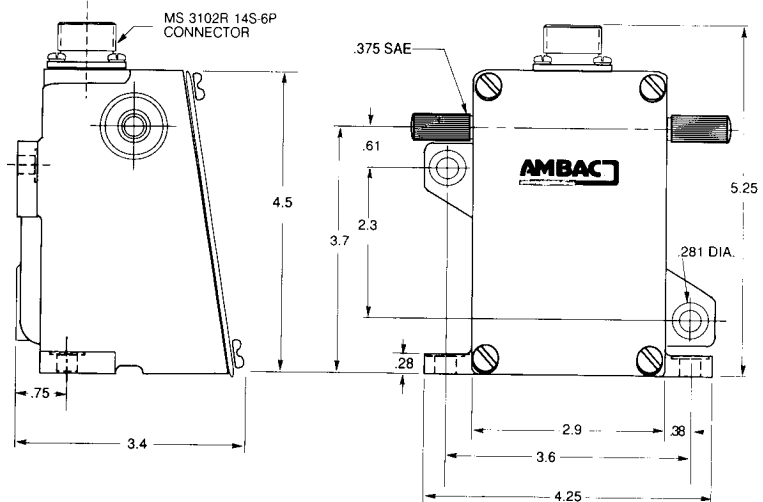
- Load Sharing Modules
- Automatic Synchronizers
- Ramp Generator Modules
- Idle/Run Switches
- Load Anticipation
- Variable Speed Control
- External Speed Trim
- Droop Capability
- Overspeed Switch
- Crank Termination

Exterior Dimensions

ECD 67-2110 Controller



AGB 130 Actuator



AMBAC International

Order Service
P.O. Box 85
Columbia, SC 29202
Phone: (803) 735-1400
Fax: (803) 735-2163