

**3 1 7**

**A**



**PUMP ROTATION:**  
Clockwise: Firing Order: 1-5-3-6-2-4  
**DRIVE END:**  
R. H. Side  
**TIMED FOR PORT CLOSING**  
**SPECIAL FEATURES:**

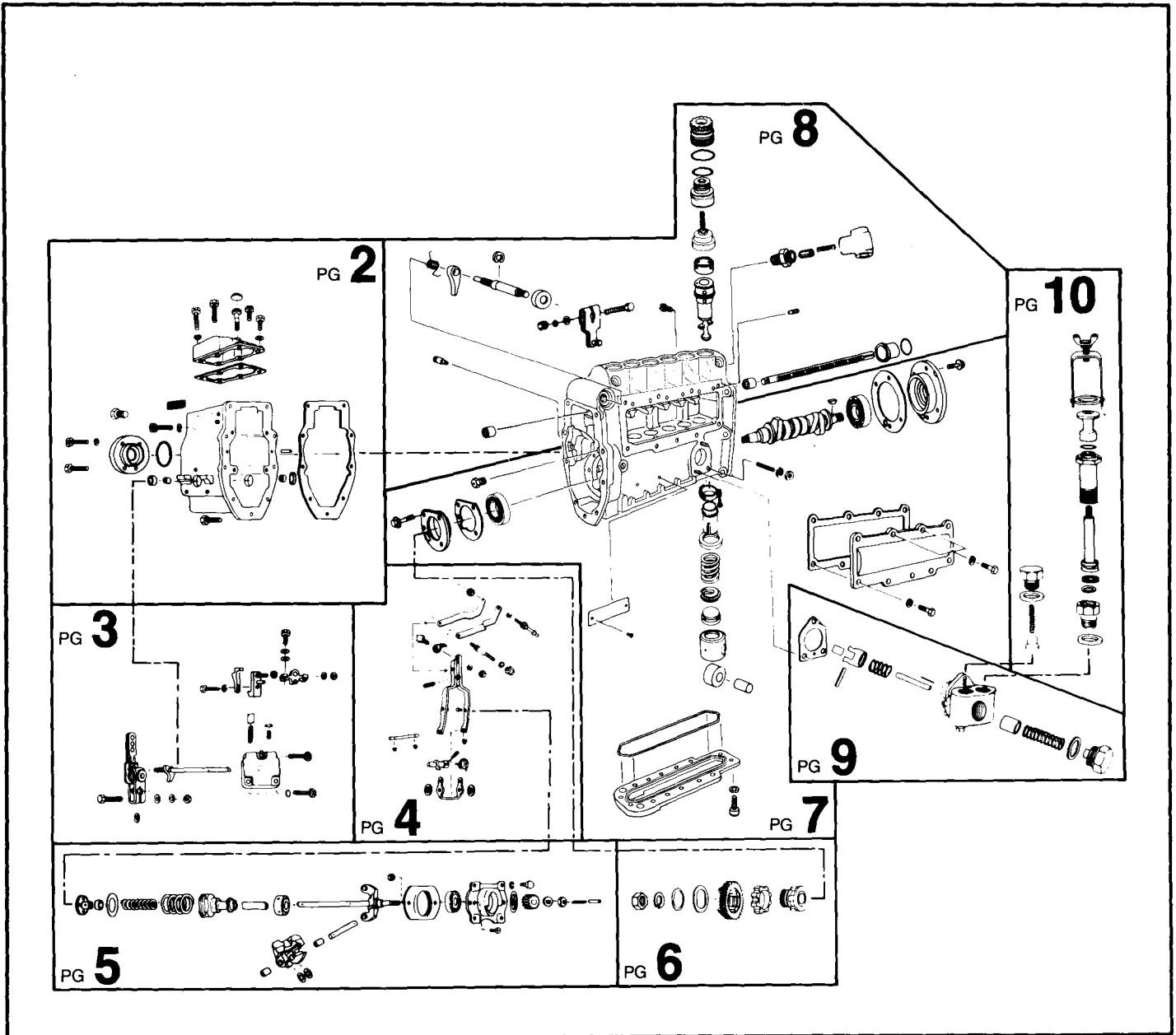
MACK  
**MODEL 300 #PLM 450317**

Special Information:

### SERVICE PARTS

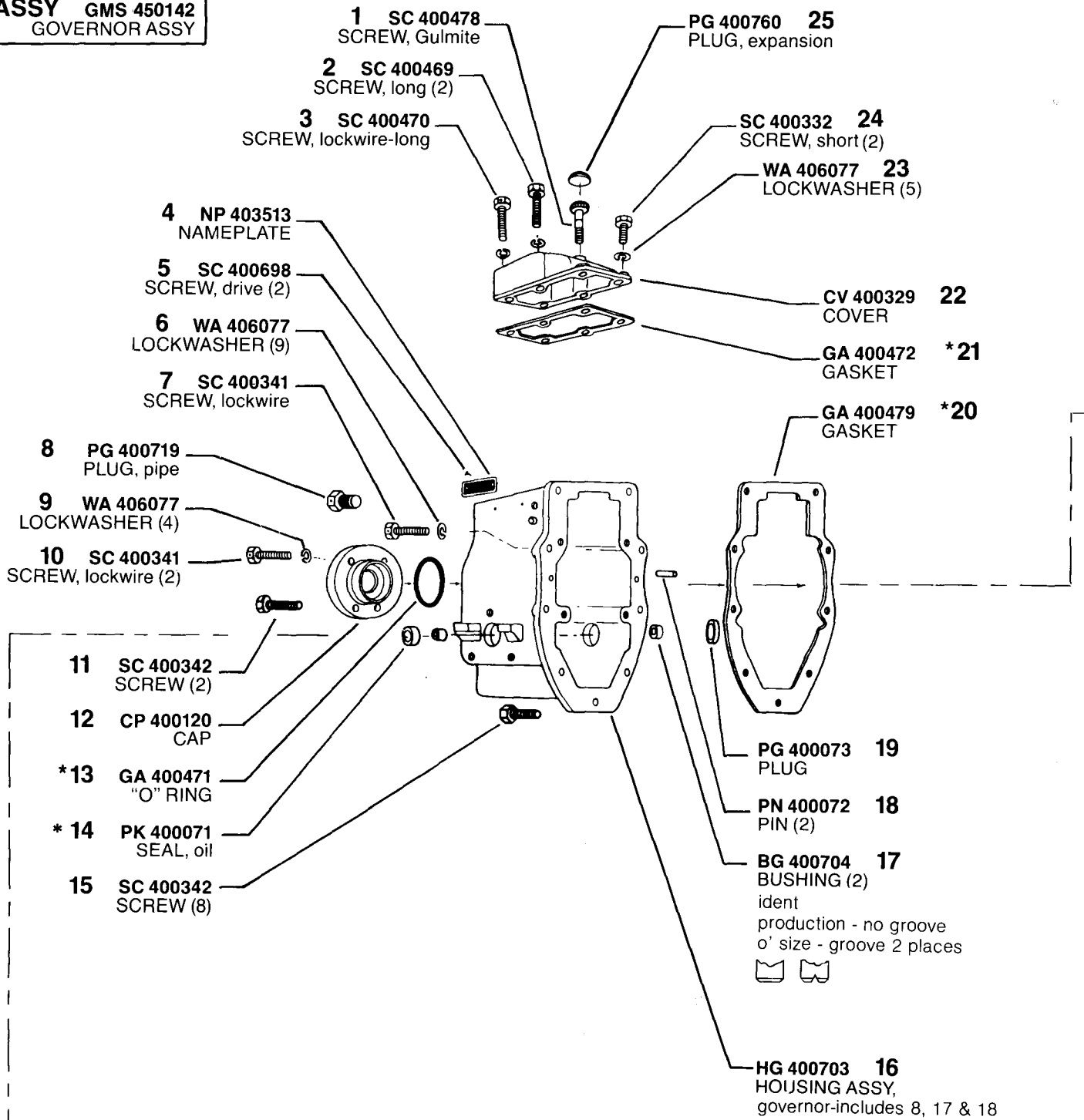
Following are all parts, part numbers, pump codes and calibrations for the *Model: #PLM 450317*. The exploded view drawing below is detailed with part numbers

listed on the pages indicated. Refer to the Index Section for explanations of codes and abbreviations.



# MODEL 300 #PLM 450317

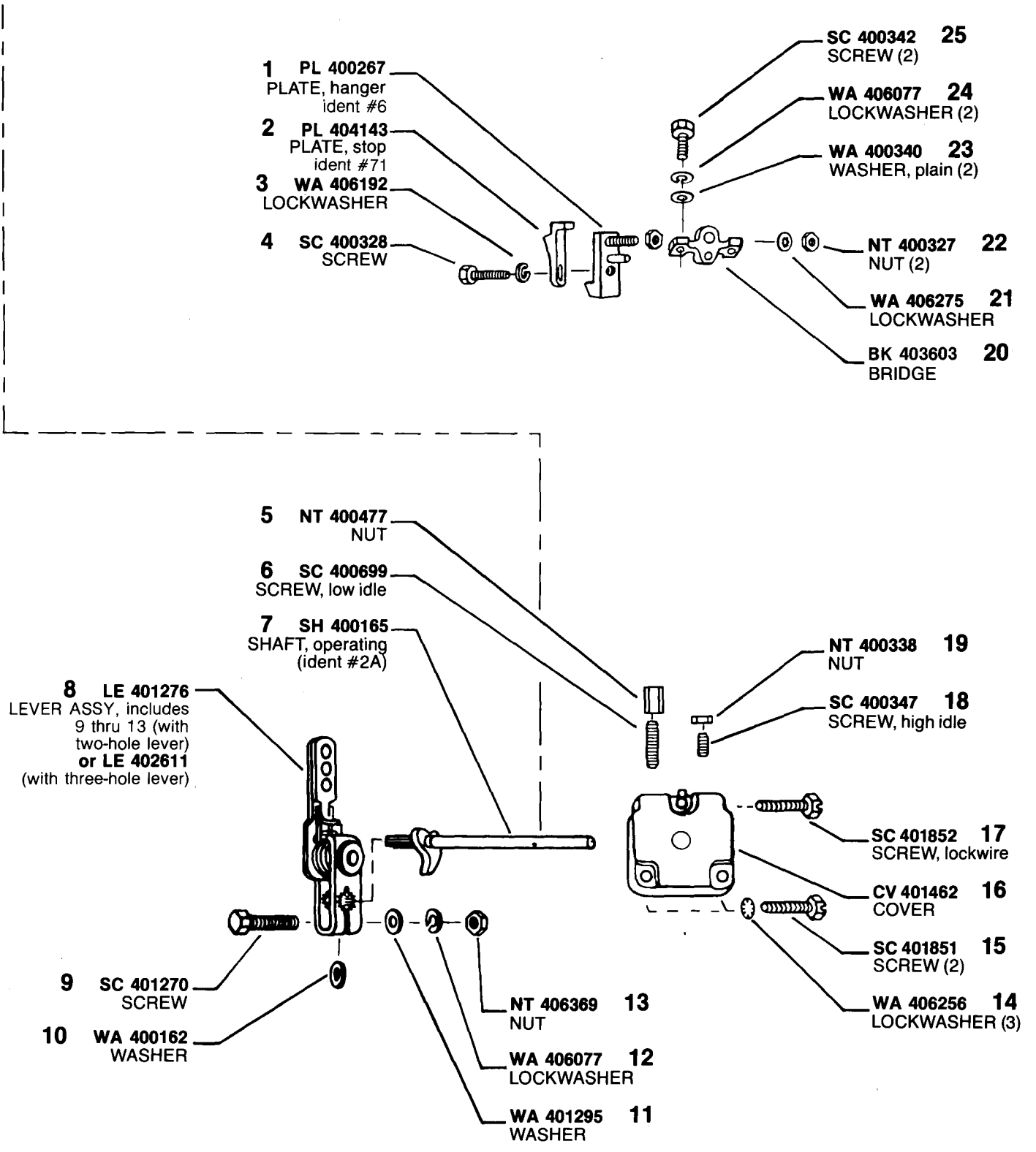
**ASSY GMS 450142**  
GOVERNOR ASSY



\*Quantity used is one, unless otherwise indicated in parenthesis ( ) following description of part.

\*Denotes parts in Gasket Kit KT 401705

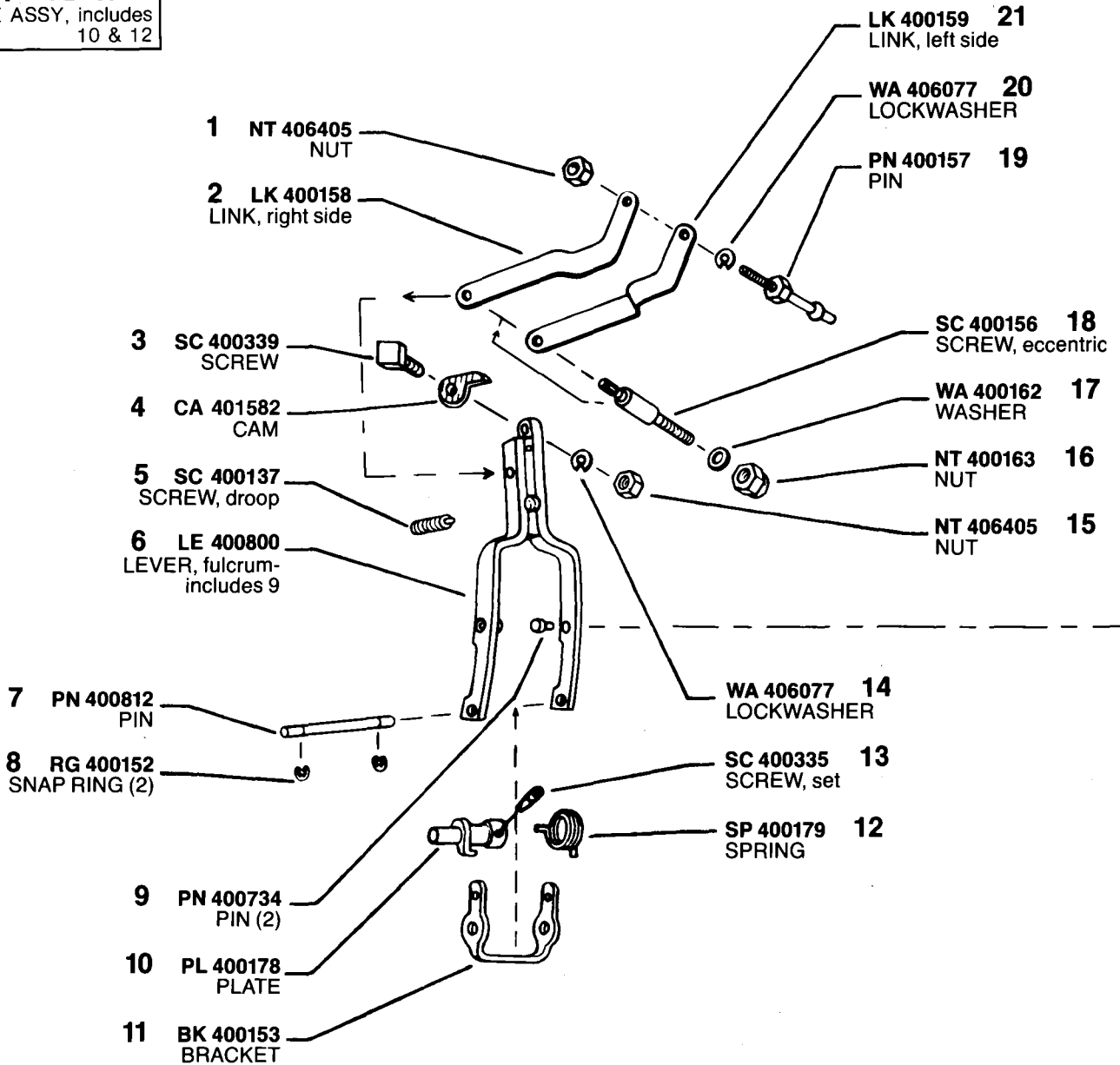
# MODEL 300 #PLM 450317



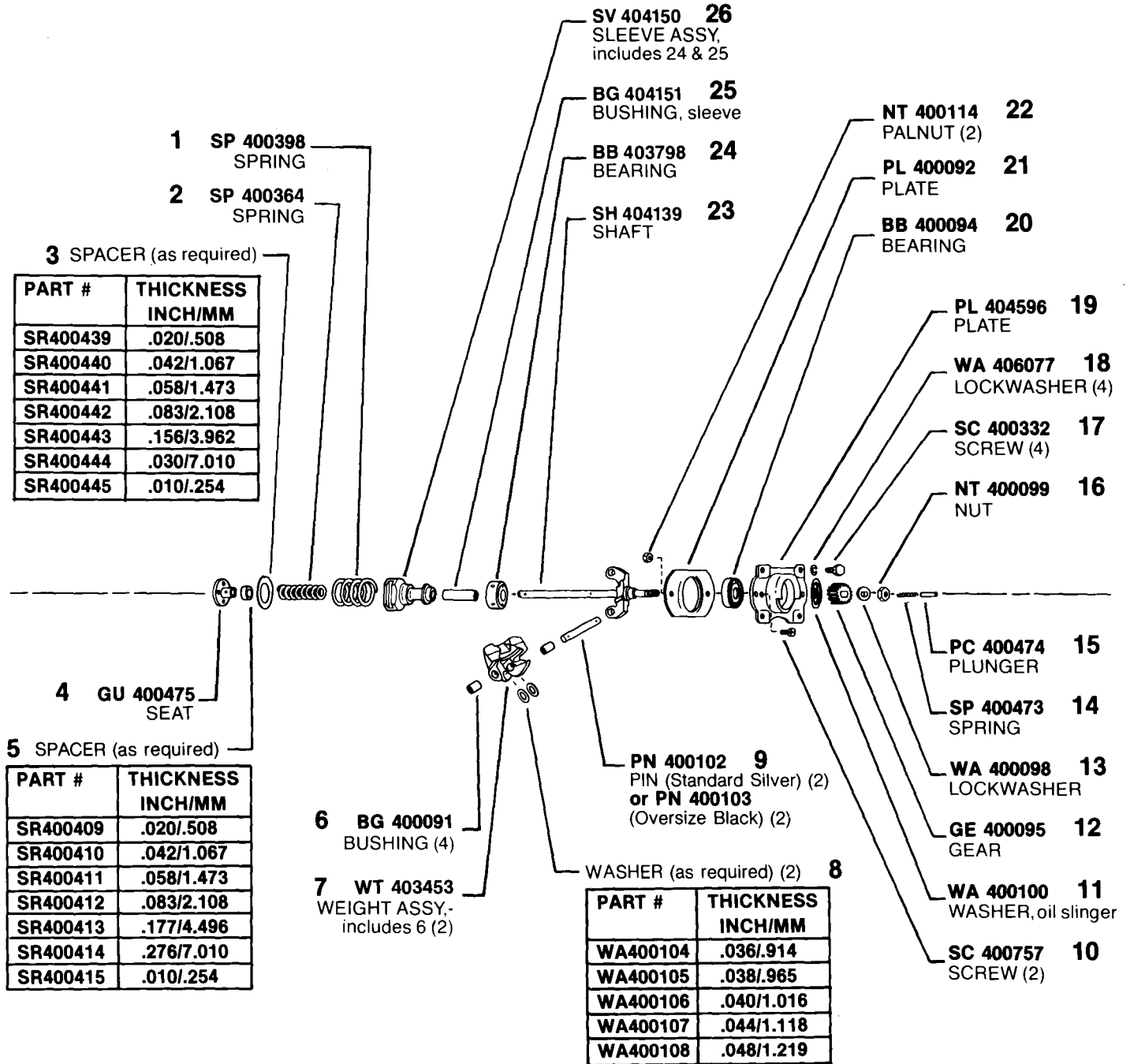
MODEL 300 #PLM 450317

**ASSY LE 400782**  
LEVER ASSY, fulcrum-  
includes 1, 2, 6 thru 9  
11 & 16 thru 21

**ASSY PL 400177**  
PLATE ASSY, includes  
10 & 12

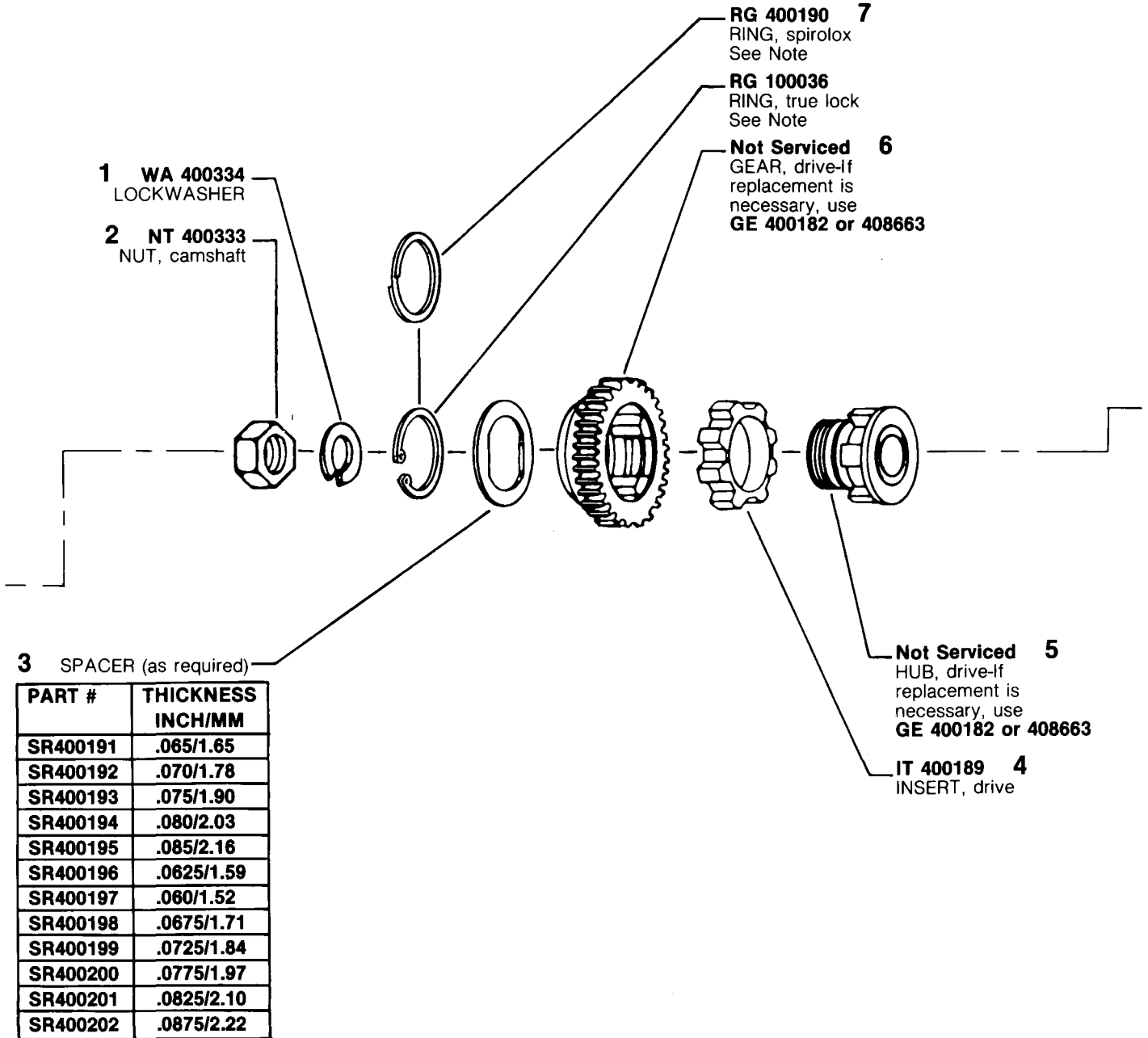


MODEL 300 #PLM 450317



MODEL 300 #PLM 450317

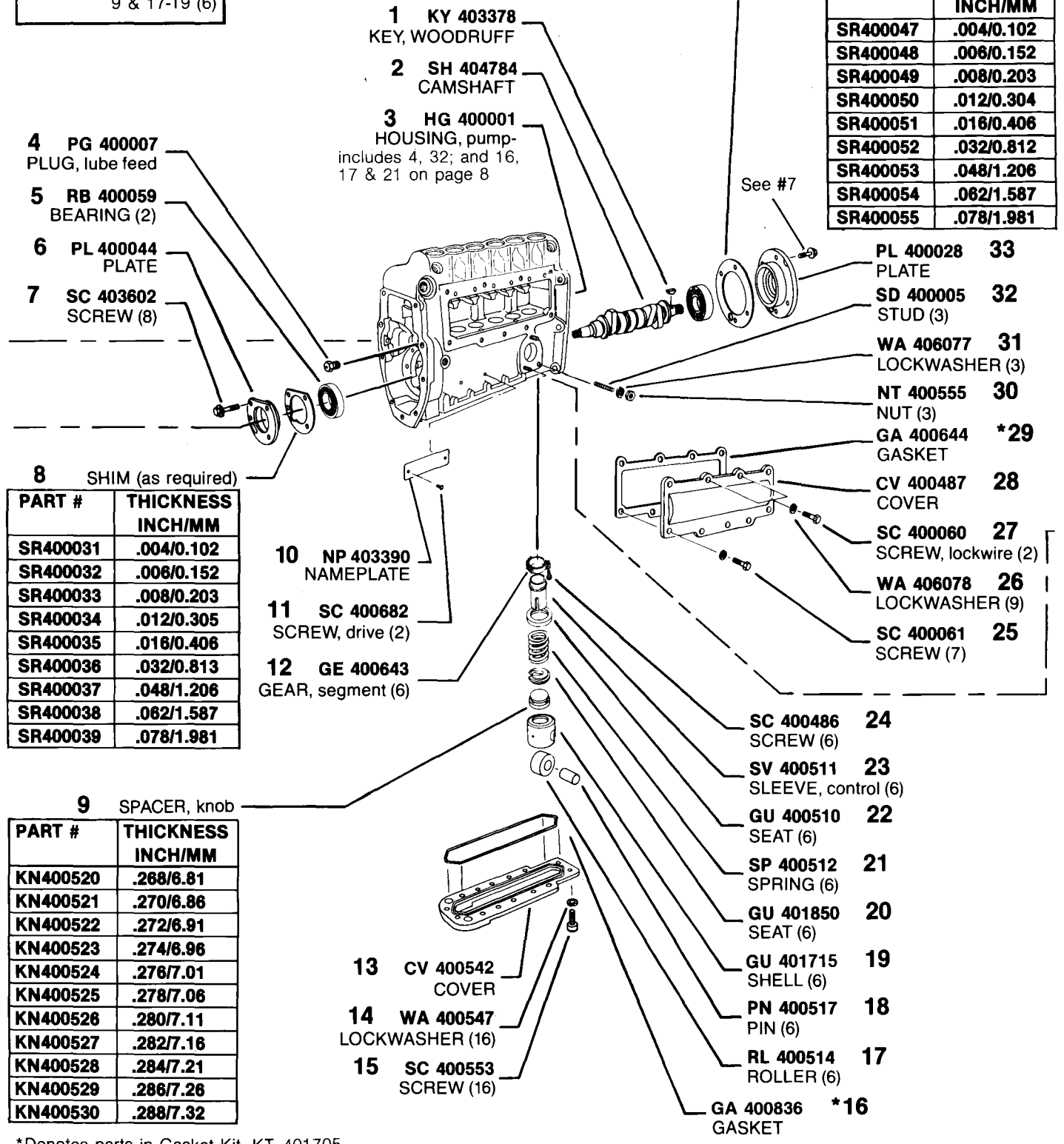
**ASSY GE 400182  
or 408663  
(RUBBER DRIVE)**  
DRIVE ASSY, includes 3 thru 7



#7 NOTE: Earlier rubber drive assy GE 400182 used RG 400190 (Spirolox ring), later assy GE 408663 using RG 100036 (true lock ring). Spirolox & true lock rings are NOT interchangeable.

**MODEL 300 #PLM 450317**

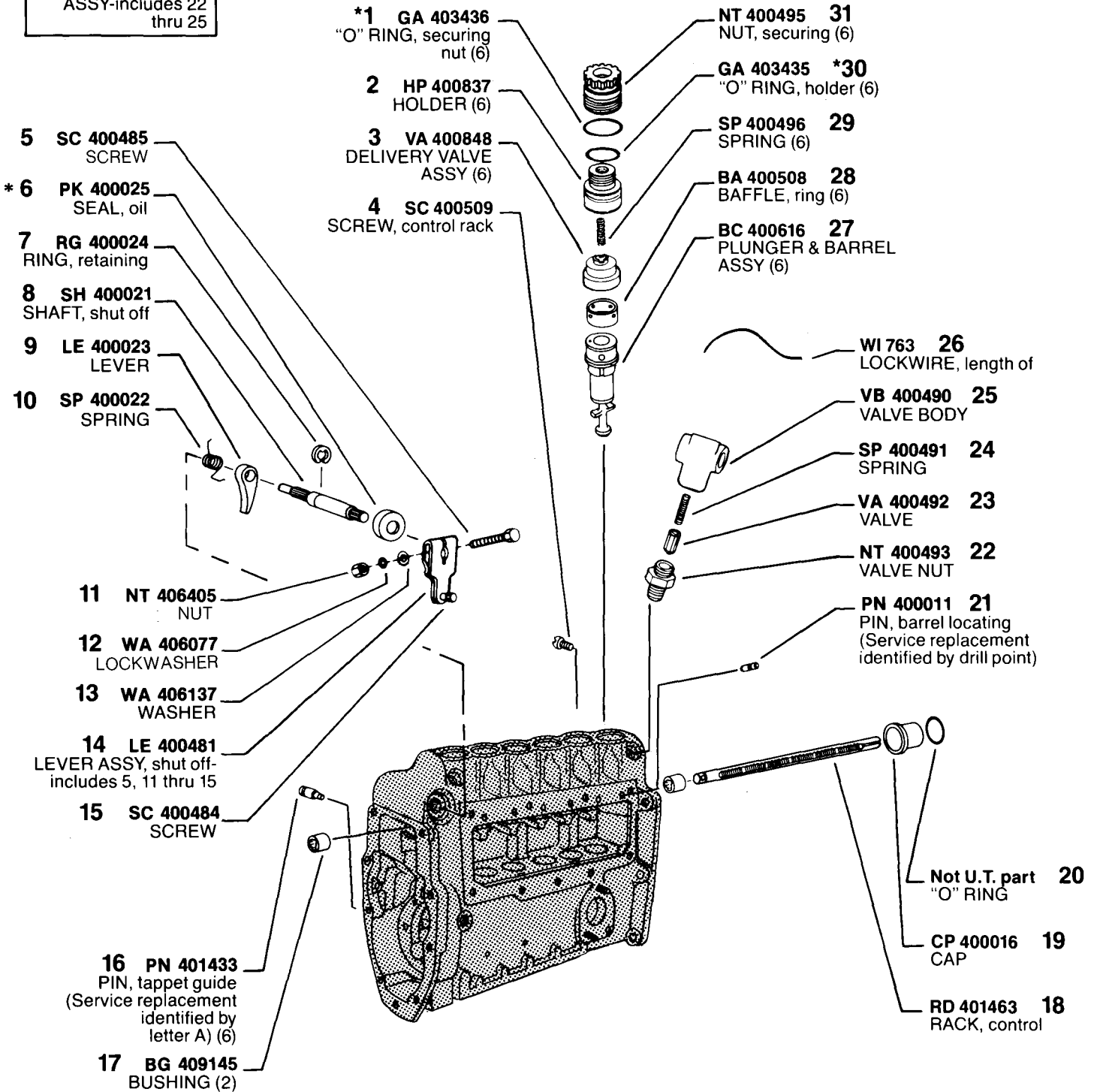
**ASSY TP 401716**  
TAPPET ASSY, includes  
9 & 17-19 (6)



\*Denotes parts in Gasket Kit, KT 401705.

# MODEL 300 #PLM 450317

**ASSY VA 400683**  
OVERFLOW VALVE  
ASSY-includes 22  
thru 25



\*Denotes parts in Gasket Kit KT 401705.

**MODEL 300 #PLM 450317**

**ASSY SPT 400710**  
SUPPLY PUMP ASSY

**1 HG 400758**  
HOUSING ASSY,  
includes 8 & 12

**2 PN 400605**  
PIN

**3 SP 400708**  
SPRING

**4 GU 400602**  
TAPPET

**5 RL 400603**  
ROLLER

**\*6 GA 400554**  
GASKET

**7 PN 400604**  
PIN

**8 SPINDLE**

**PLUNGER ASSY 12**

PART #	THICKNESS MM	COLOR CODE
PC400561	24.984/24.989	Two white dots
PC400562	24.986/24.991	Two green dots
PC400563	24.988/24.993	Two yellow dots
PC400564	24.990/24.995	Two red dots
PC400565	24.992/24.997	Two blue dots
PC400566	25.083/25.087	Three black dots
PC400567	25.085/25.089	Two black dots
PC400568	25.089/25.093	Two red & two black dots

PART #	THICKNESS MM	COLOR CODE
SL400581	4.993/4.995	Red one end
SL400582	4.995/4.997	Blue one end
SL400583	4.997/4.999	Yellow one end
SL400743	5.020/5.022	Yellow one end White one end
SL400744	5.044/5.046	Yellow one end Black one end
SL400745	5.067/5.069	White one end Black one end
SL400584	5.087/5.089	White one end
SL400585	5.089/5.091	Black one end
SL400586	5.091/5.093	Green one end
SL400587	5.093/5.095	Alum. one end
SL400746	5.116/5.118	Alum. one end Red one end
SL400747	5.139/5.141	Alum. one end Blue one end
SL400748	5.162/5.164	Alum. one end Yellow one end
SL400589	5.189/5.191	Red both ends
SL400590	5.191/5.193	Blue both ends
SL400591	5.193/5.195	Yellow both ends
SL400592	5.195/5.197	Black both ends

SPINDLE (requires reaming)

PART #	THICKNESS MM	COLOR CODE
SL7912-1	5.557/5.560	Red & blue one end
SL7912-2	5.561/5.564	Red & green one end
SL7912-3	5.565/5.568	Red & yellow one end
SL7912-4	5.569/5.572	Blue & green one end

**SC 400753 11**  
SCREW

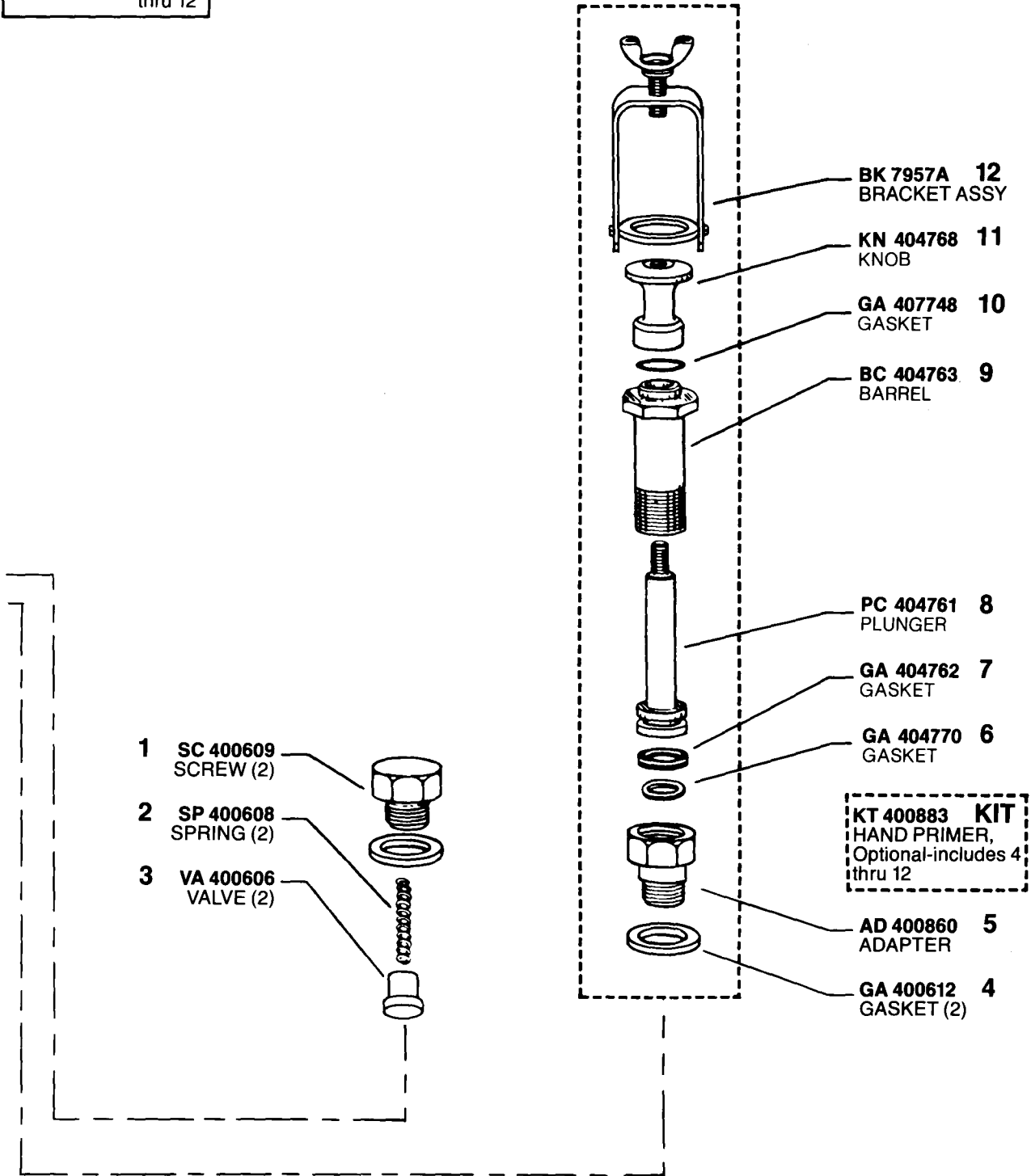
**GA 400610 10**  
GASKET

**SP 400709 9**  
SPRING

\*Denotes parts in Gasket Kit KT 401705.

# MODEL 300 #PLM 450317

**ASSY MP 404760**  
MANUAL PRIMER  
ASSY-includes 6  
thru 12



**MODEL 300 #PLM 450317**

