

395

A

PUMP ROTATION:
Clockwise: Firing Order: 1-5-3-6-2-4
DRIVE END:
R. H. Side
TIMED FOR PORT CLOSING
SPECIAL FEATURES:
"Dual Speed"

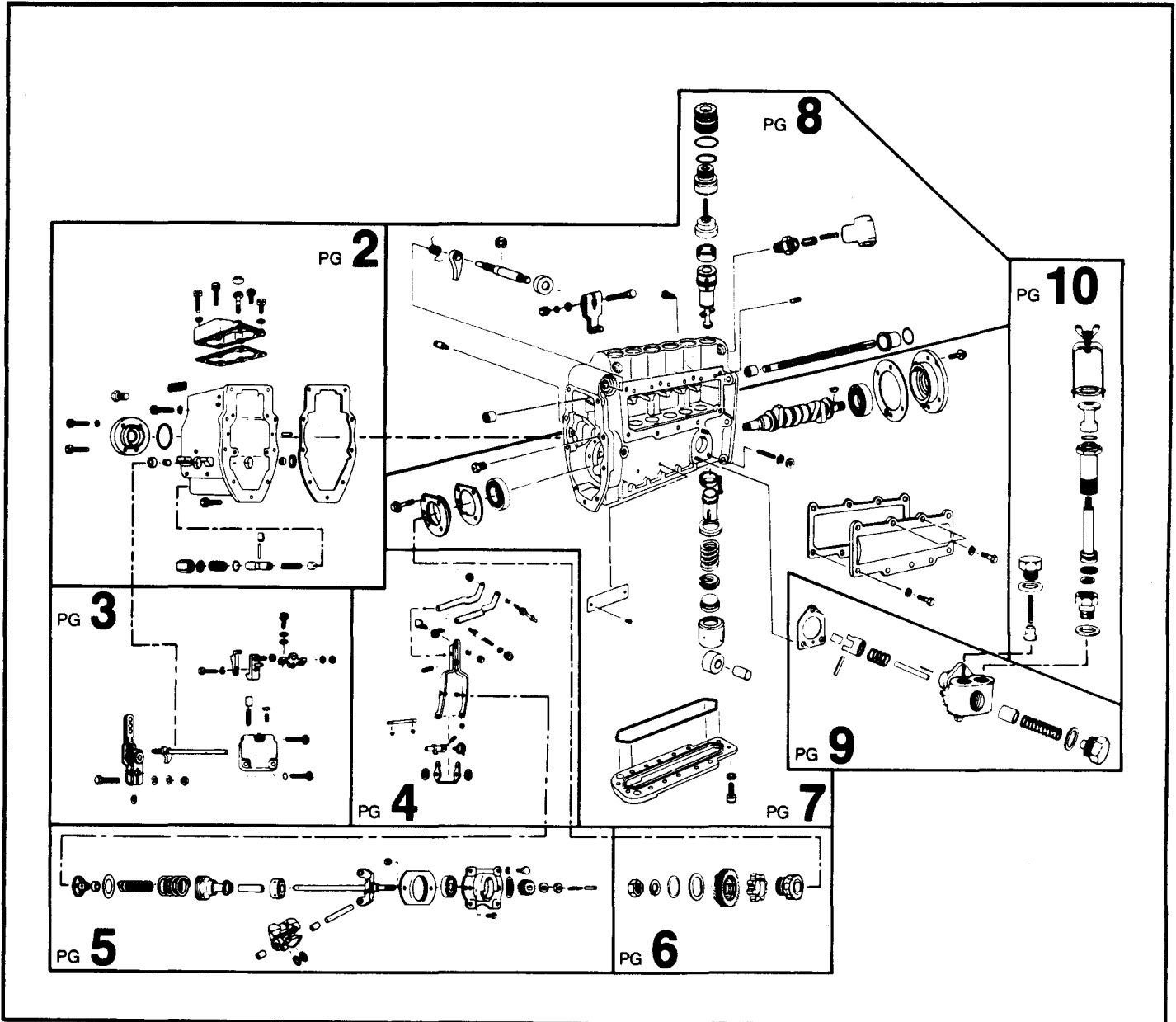
MACK
MODEL 300 #PLM 450395
Special Information:



SERVICE PARTS

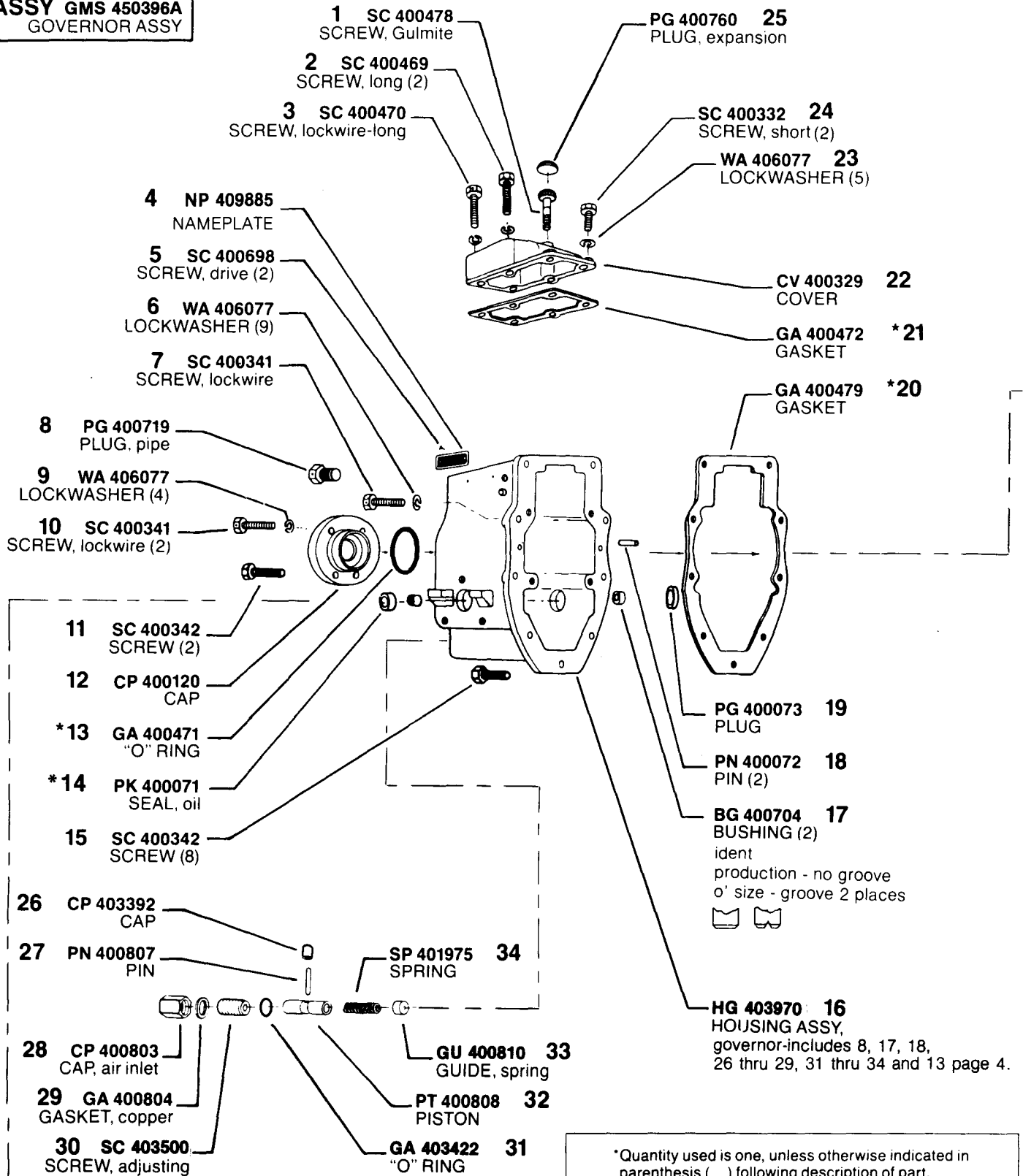
Following are all parts, part numbers, pump codes and calibrations for the *Model: #PLM 450395*. The exploded view drawing below is detailed with part numbers

listed on the pages indicated. Refer to the Index Section for explanations of codes and abbreviations.

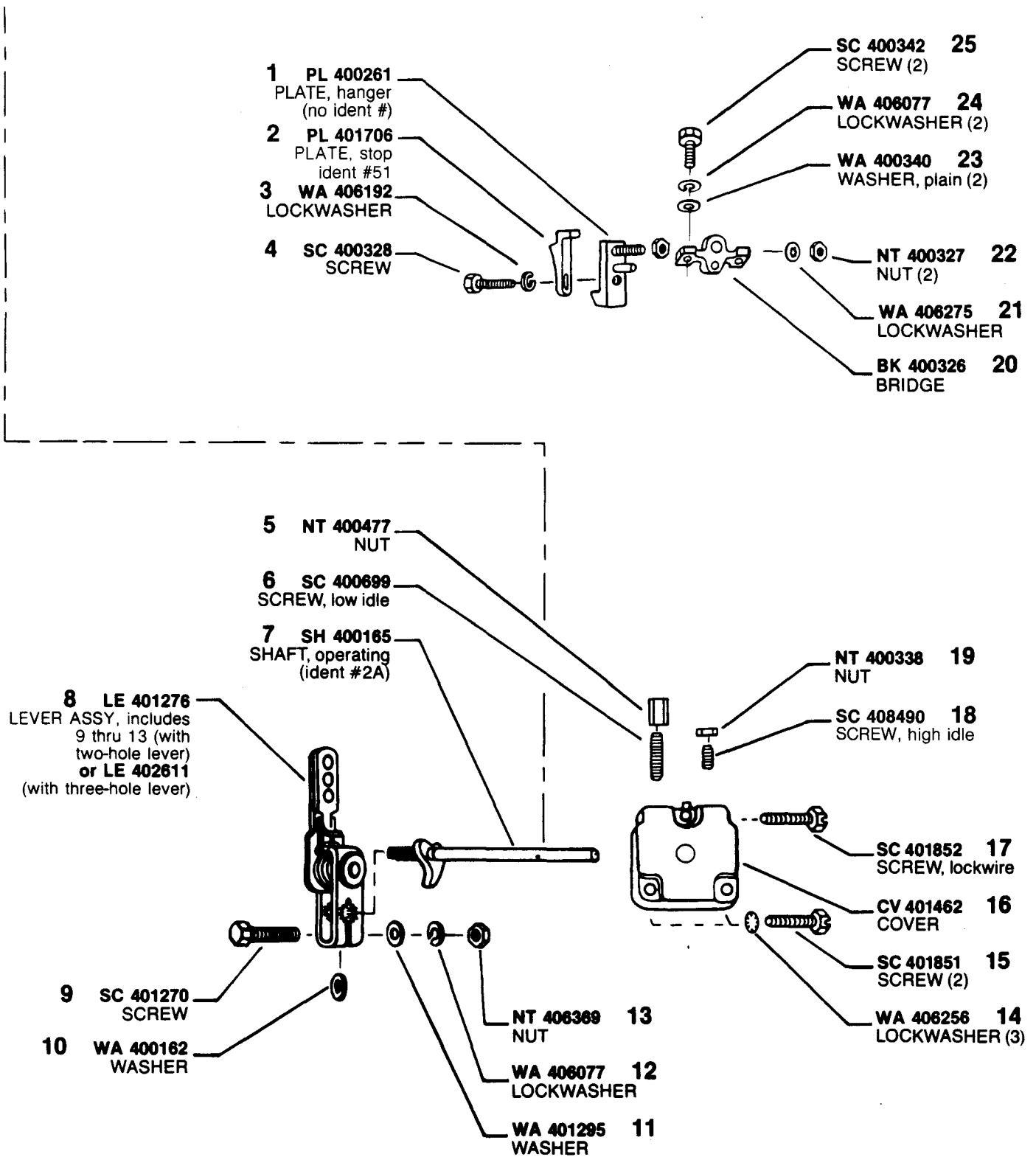


MODEL 300 #PLM 450395

ASSY GMS 450396A
GOVERNOR ASSY



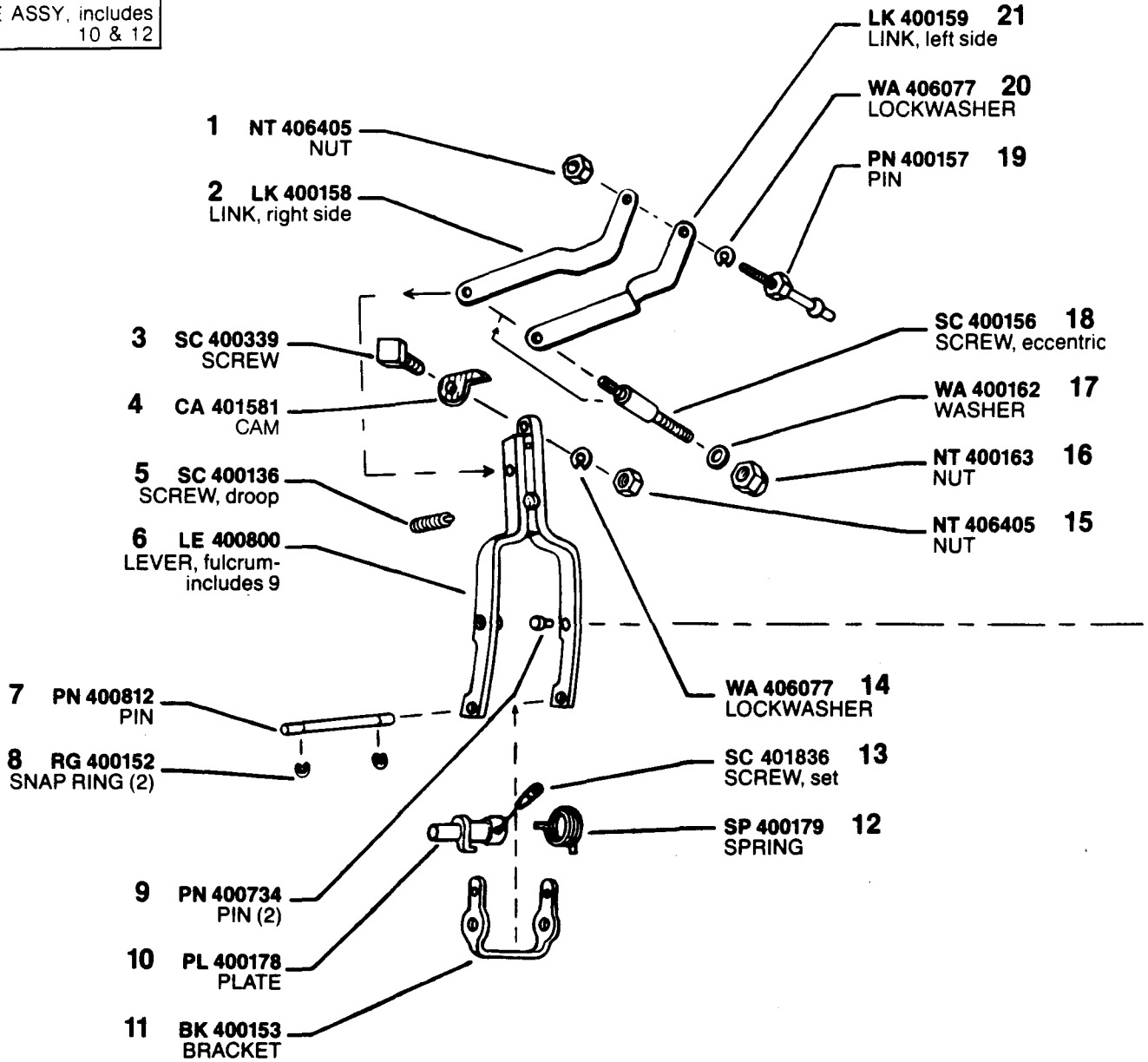
MODEL 300 #PLM 450395



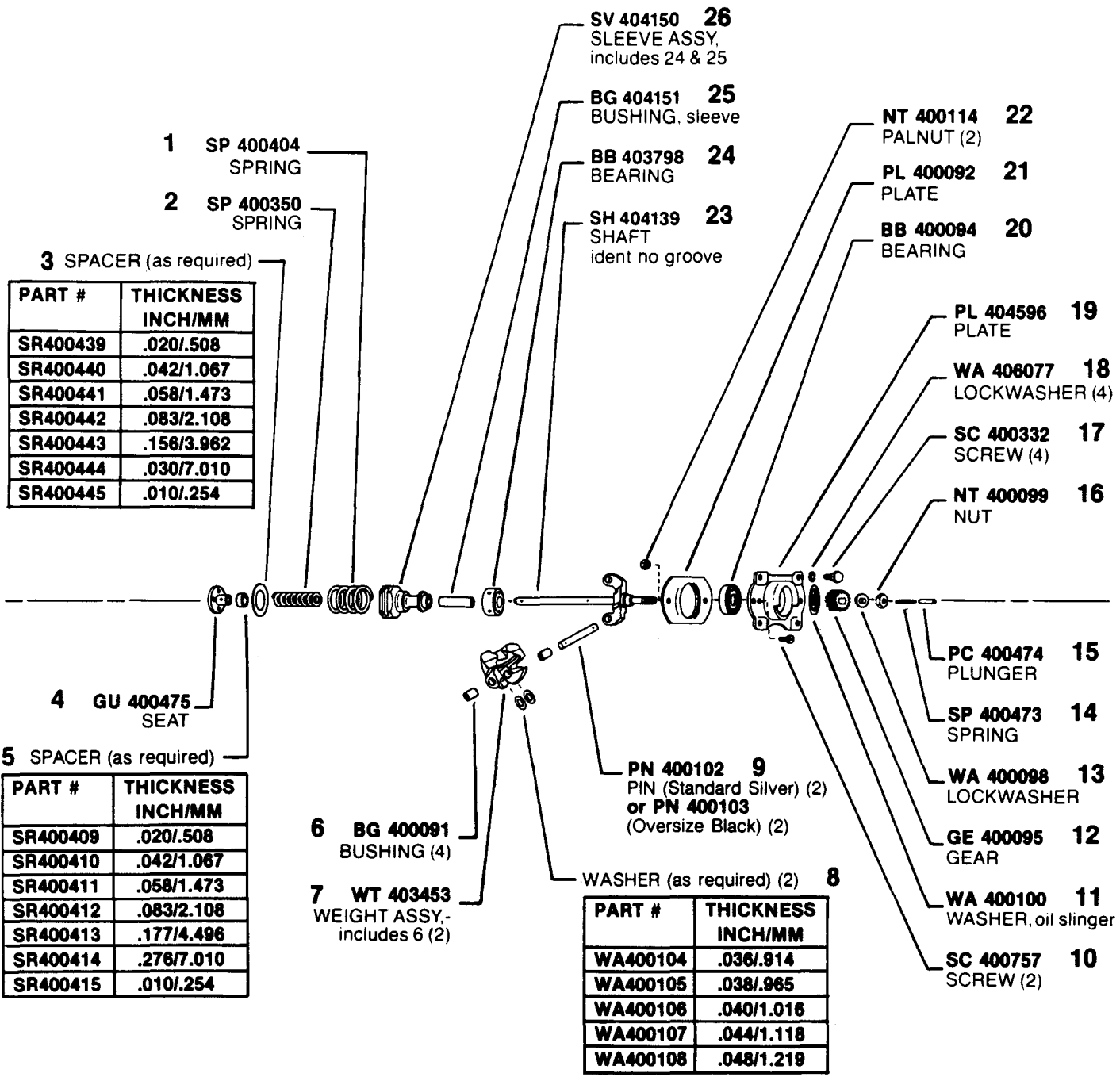
MODEL 300 #PLM 450395

ASSY LE 400782
 LEVER ASSY, fulcrum-
 includes 1, 2, 6 thru 9
 11 & 16 thru 21

ASSY PL 400177
 PLATE ASSY, includes
 10 & 12

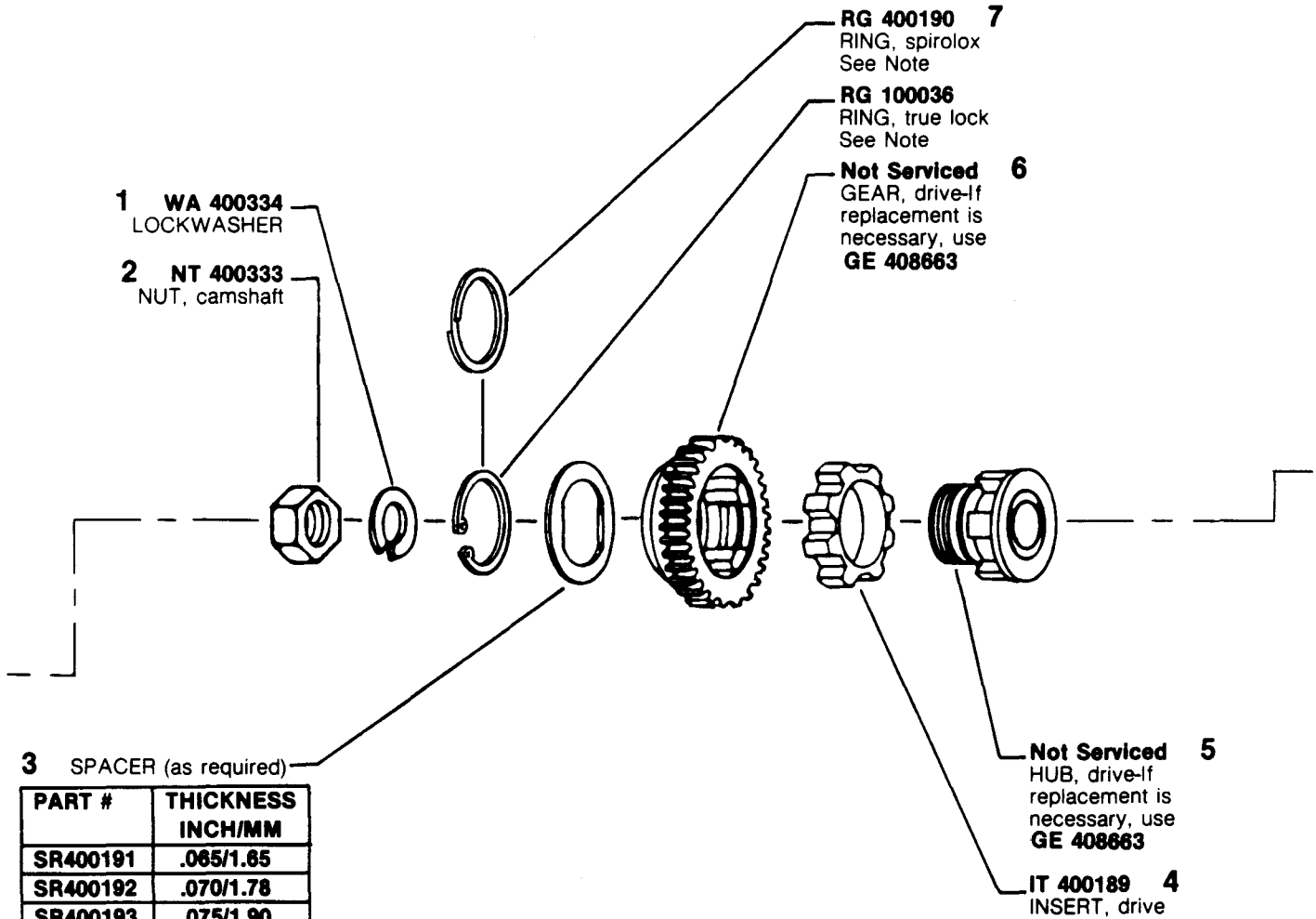


MODEL 300 #PLM 450395



MODEL 300 #PLM 450395

ASSY GE 408663
(RUBBER DRIVE)
 DRIVE ASSY, includes 3 thru 7



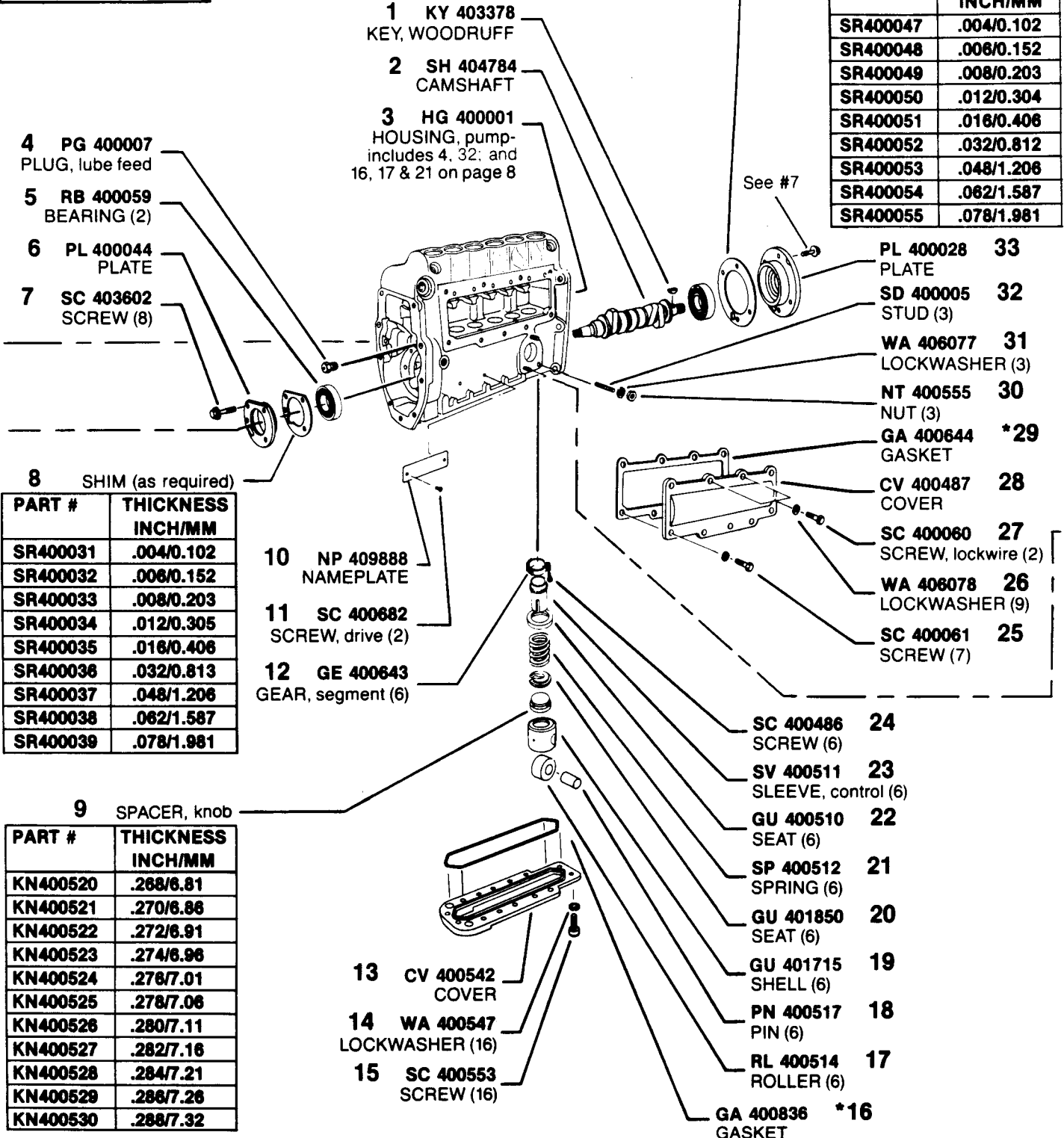
3 SPACER (as required)

PART #	THICKNESS INCH/MM
SR400181	.065/1.65
SR400192	.070/1.78
SR400193	.075/1.90
SR400194	.080/2.03
SR400195	.085/2.16
SR400196	.0625/1.59
SR400197	.060/1.52
SR400198	.0675/1.71
SR400199	.0725/1.84
SR400200	.0775/1.97
SR400201	.0825/2.10
SR400202	.0875/2.22

#7 NOTE: Earlier rubber drive assy GE 400182 used RG 400190 (Spirolox ring), later assy GE 408663 using RG 100036 (true lock ring). Spirolox & true lock rings are NOT interchangeable.

MODEL 300 #PLM 450395

ASSY TP 401716
TAPPET ASSY, includes
9 & 17-19 (6)



8 SHIM (as required)

PART #	THICKNESS INCH/MM
SR400031	.004/0.102
SR400032	.006/0.152
SR400033	.008/0.203
SR400034	.012/0.305
SR400035	.016/0.406
SR400036	.032/0.813
SR400037	.048/1.206
SR400038	.062/1.587
SR400039	.078/1.981

9 SPACER, knob

PART #	THICKNESS INCH/MM
KN400520	.268/6.81
KN400521	.270/6.86
KN400522	.272/6.91
KN400523	.274/6.96
KN400524	.276/7.01
KN400525	.278/7.06
KN400526	.280/7.11
KN400527	.282/7.16
KN400528	.284/7.21
KN400529	.286/7.26
KN400530	.288/7.32

34 SHIM (as required)

PART #	THICKNESS INCH/MM
SR400047	.004/0.102
SR400048	.006/0.152
SR400049	.008/0.203
SR400050	.012/0.304
SR400051	.016/0.406
SR400052	.032/0.812
SR400053	.048/1.206
SR400054	.062/1.587
SR400055	.078/1.981

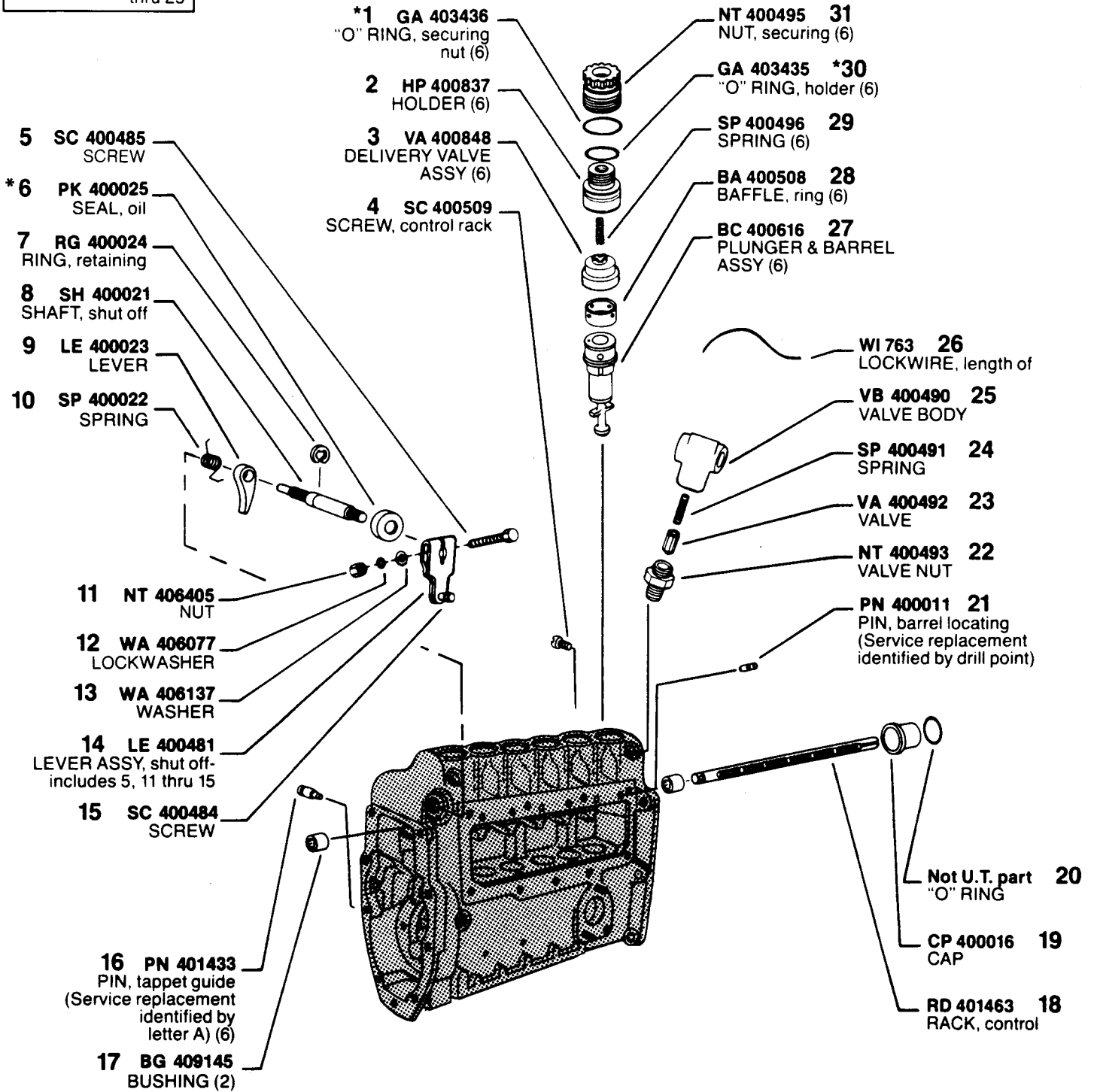
- PL 400028 **33**
PLATE
- SD 400005 **32**
STUD (3)
- WA 406077 **31**
LOCKWASHER (3)
- NT 400555 **30**
NUT (3)
- GA 400644 ***29**
GASKET
- CV 400487 **28**
COVER
- SC 400060 **27**
SCREW, lockwire (2)
- WA 406078 **26**
LOCKWASHER (9)
- SC 400061 **25**
SCREW (7)

- SC 400486 **24**
SCREW (6)
- SV 400511 **23**
SLEEVE, control (6)
- GU 400510 **22**
SEAT (6)
- SP 400512 **21**
SPRING (6)
- GU 401850 **20**
SEAT (6)
- GU 401715 **19**
SHELL (6)
- PN 400517 **18**
PIN (6)
- RL 400514 **17**
ROLLER (6)
- GA 400836 ***16**
GASKET

*Denotes parts in Gasket Kit, KT 401705.

MODEL 300 #PLM 450395

ASSY VA 400683
OVERFLOW VALVE
 ASSY-includes 22
 thru 25



*Denotes parts in Gasket Kit KT 401705.

MODEL 300 #PLM 450395

ASSY SPT 400710
SUPPLY PUMP ASSY

1 HG 400758
HOUSING ASSY,
includes 8 & 12

2 PN 400605
PIN

3 SP 400708
SPRING

4 GU 400602
TAPPET

5 RL 400603
ROLLER

***6 GA 400554**
GASKET

7 PN 400604
PIN

8 SPINDLE

PLUNGER ASSY 12

PART #	THICKNESS MM	COLOR CODE
PC400561	24.984/24.989	Two white dots
PC400562	24.986/24.991	Two green dots
PC400563	24.988/24.993	Two yellow dots
PC400564	24.990/24.995	Two red dots
PC400565	24.992/24.997	Two blue dots
PC400566	25.083/25.087	Three black dots
PC400567	25.085/25.089	Two black dots
PC400568	25.089/25.093	Two red & two black dots

PART #	THICKNESS MM	COLOR CODE
SL400581	4.993/4.995	Red one end
SL400582	4.995/4.997	Blue one end
SL400583	4.997/4.999	Yellow one end
SL400743	5.020/5.022	Yellow one end White one end
SL400744	5.044/5.046	Yellow one end Black one end
SL400745	5.067/5.069	White one end Black one end
SL400584	5.087/5.089	White one end
SL400585	5.089/5.091	Black one end
SL400586	5.091/5.093	Green one end
SL400587	5.093/5.095	Alum. one end
SL400746	5.116/5.118	Alum. one end Red one end
SL400747	5.139/5.141	Alum. one end Blue one end
SL400748	5.162/5.164	Alum. one end Yellow one end
SL400589	5.189/5.191	Red both ends
SL400590	5.191/5.193	Blue both ends
SL400591	5.193/5.195	Yellow both ends
SL400592	5.195/5.197	Black both ends

SPINDLE (requires reaming)

PART #	THICKNESS MM	COLOR CODE
SL7912-1	5.557/5.560	Red & blue one end
SL7912-2	5.561/5.564	Red & green one end
SL7912-3	5.565/5.568	Red & yellow one end
SL7912-4	5.569/5.572	Blue & green one end

SC 400753 11
SCREW

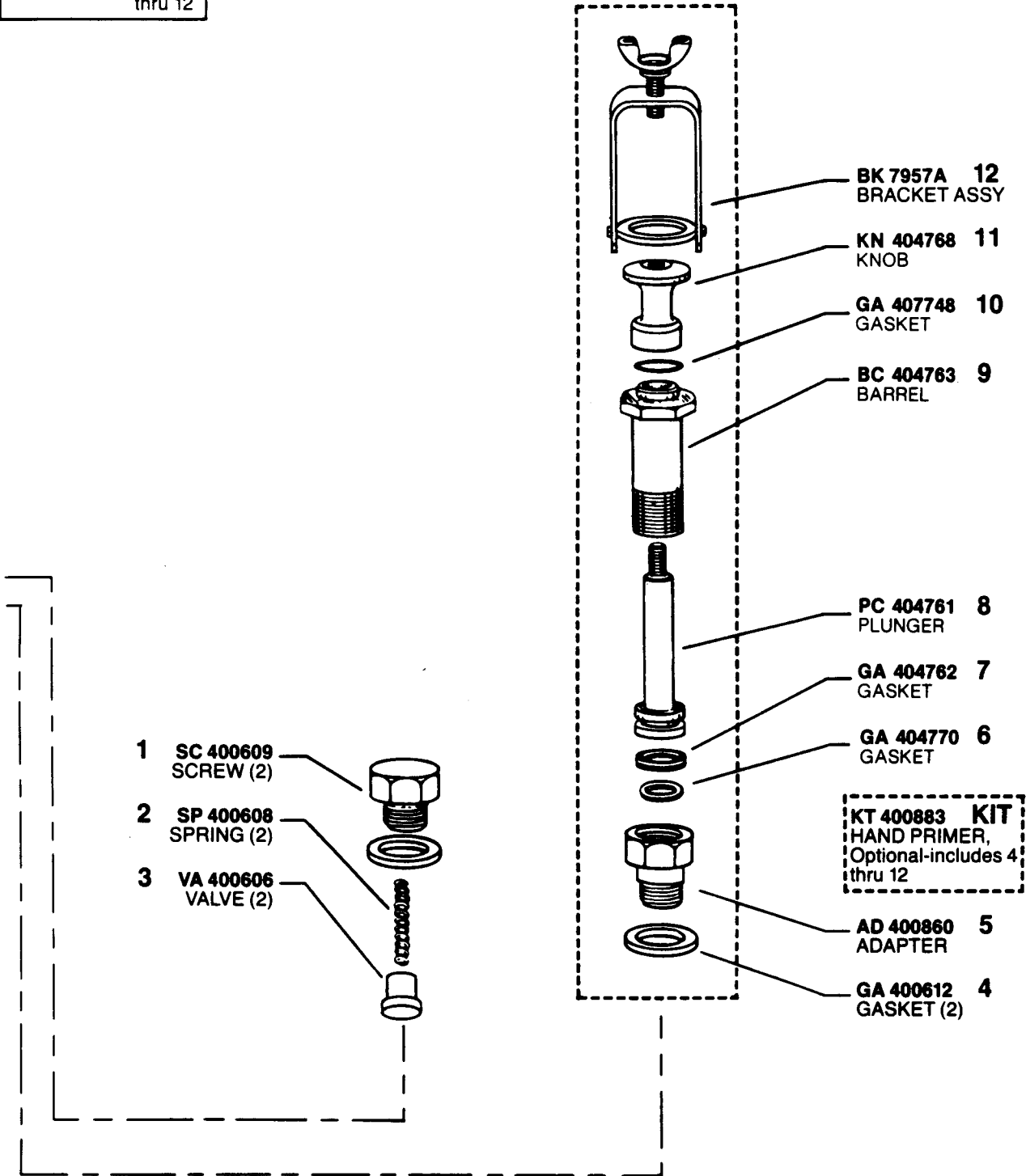
GA 400610 10
GASKET

SP 400709 9
SPRING

*Denotes parts in Gasket Kit KT 401705.

MODEL 300 #PLM 450395

ASSY MP 404760
MANUAL PRIMER
ASSY-includes 6
thru 12



MODEL 300 #PLM 450395

