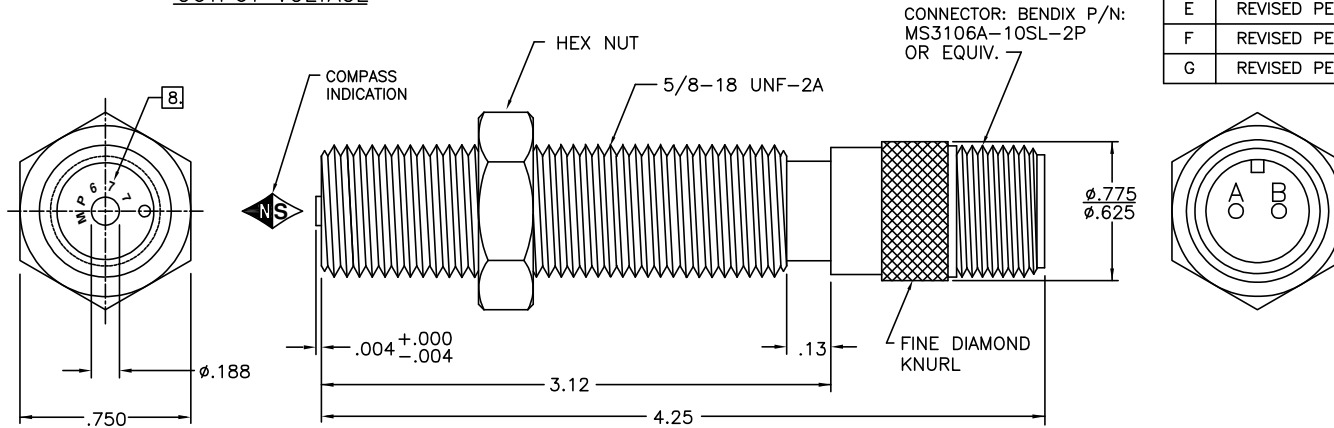


OUTPUT VOLTAGE



REVISIONS			
LTR	DESCRIPTION	DATE	APPROVED
A	REVISED PER ECO 1226	6.14.89	G.G.
B	REVISED PER ECO 1321	5.22.90	G.G.
C	REVISED PER ECO 1333	7.12.90	G.G.
D	REVISED PER ECO 1346	8.28.90	G.G.
E	REVISED PER ECO 1357	10.26.90	G.G.
F	REVISED PER ECO 1618	1.19.01	G.G.
G	REVISED PER ECO 1717	10.1.03	S.G.

**SPECIFICATIONS:**

- RESISTANCE: 180 ± 20% OHMS AT 78° F
- INDUCTANCE: 60 mH (REF) MEASURED WITH 6 VRMS AT 1 KHz.
- OUTPUT VOLTAGE: 1.0 V P-P MIN AT THE FOLLOWING CONDITIONS:
  - AIRGAP: .055
  - TEST WHEEL: 8 PITCH GEAR.
  - SURFACE SPEED: 200 I.P.S.
  - LOAD: 20 K OHMS.
- POLARITY: PIN "A" POSITIVE WITH RESPECT TO PIN "B" WITH THE APPROACH OF A FERROUS TARGET
- TEMPERATURE RANGE (OPERATING): -65° F TO 225° F (STORAGE): -100° F TO 225° F
- HIGH POT: 500V ± 12V RMS MIN (LEAD WIRES TO CASE).
- LEAD WIRES MUST WITHSTAND A PULL TEST OF 2 LBS EACH.
- MARK FRONT OF BOBBIN WITH "MP677" AND DATE CODE (MM-YYYY), USING 220001-01 (WHITE INK)

		UNLESS OTHERWISE SPECIFIED DIMENSIONS ARE IN INCHES TOLERANCES ARE FRACTIONS: DECIMALS: ANGLES: ±1/64 .XX ±.01 ±1/2° .XXX ±.005 ±1/2°		CONTRACT NO.	
		MATERIAL		APPROVALS DATE	
		FINISH		DRAWN A.P.W. 1.5.88	
		DO NOT SCALE DRAWING		CHECKED G.G. 1.6.88	
NEXT ASSY USED ON		MP677		APPRVD G.G. 1.6.88	
APPLICATION				DRAWING NO.	
				401070-00	
				SCALE: NONE	
				SHEET 1 OF 1	

VARIABLE RELUCTANCE  
SPEED SENSOR

SIZE CODE INDET DRAWING NO.  
B 401070-00