

**404**

**A**

**PUMP ROTATION:**  
Clockwise: Firing Order: 1-5-3-6-2-4  
**DRIVE END:**  
R. H. Side  
**TIMED FOR PORT CLOSING**  
**SPECIAL FEATURES:**  
"Dual Speed"

**MACK**  
**MODEL 300 #PLM 450404**

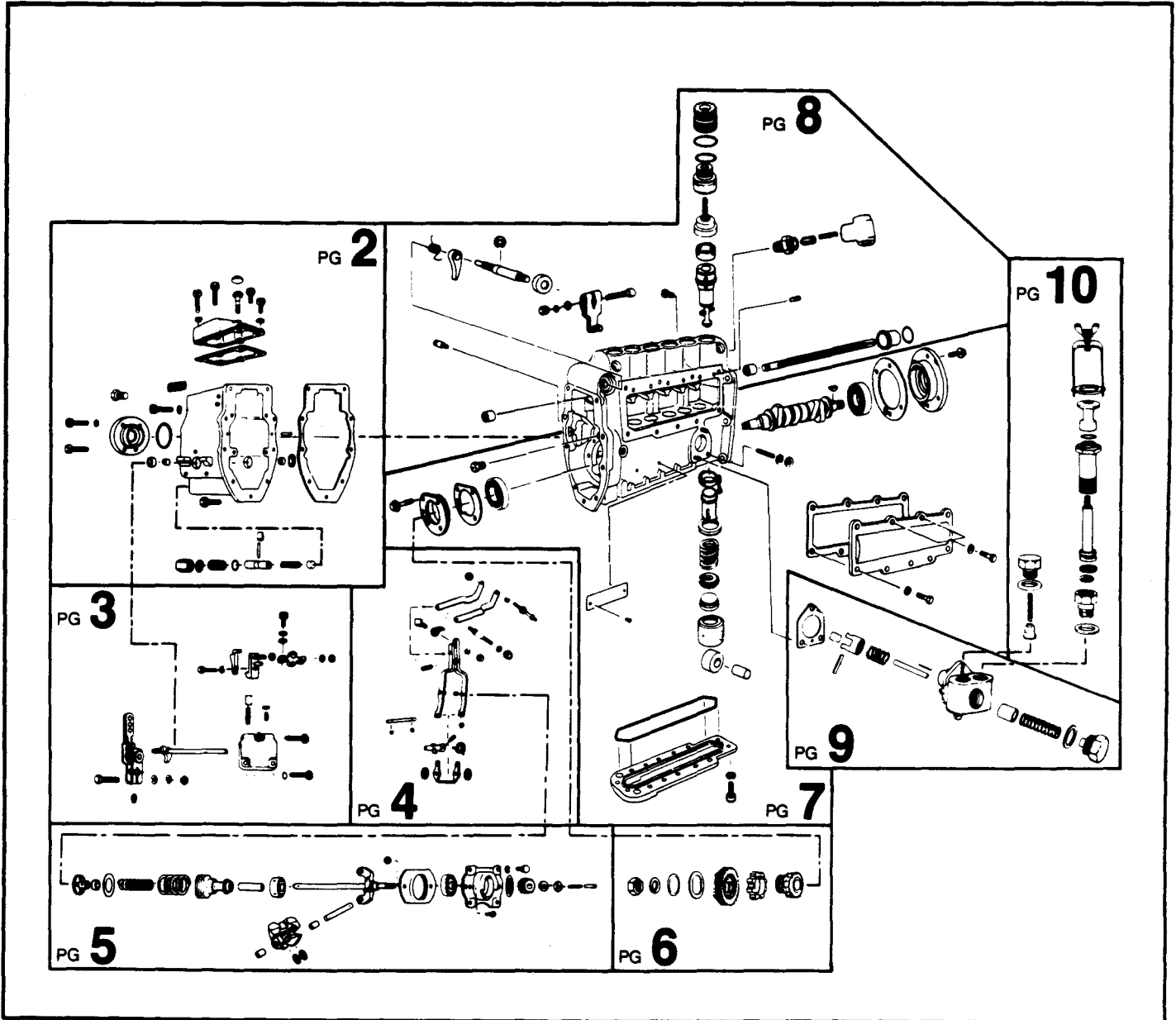
**Special Information:**



### SERVICE PARTS

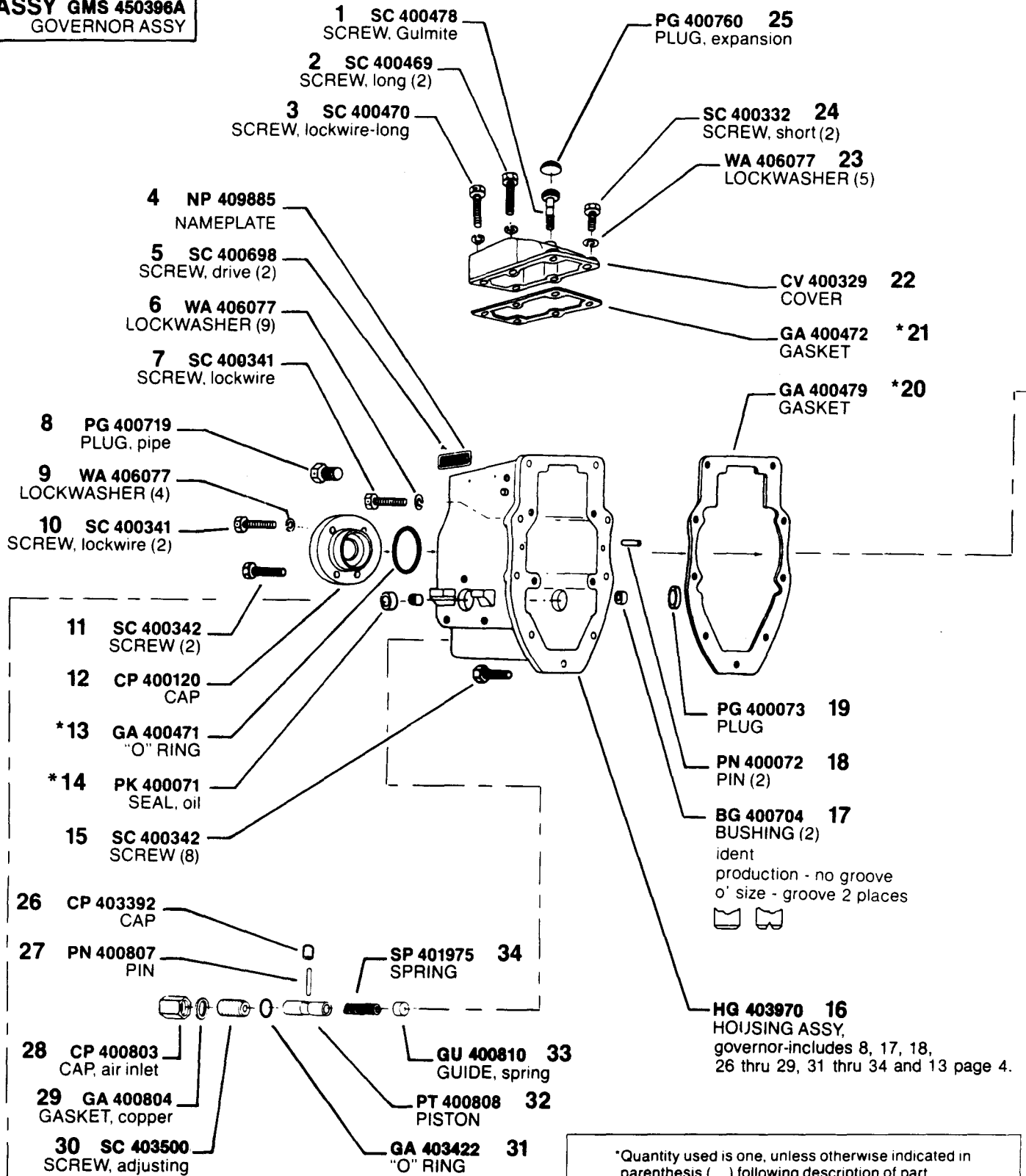
Following are all parts, part numbers, pump codes and calibrations for the *Model: #PLM 450404*. The exploded view drawing below is detailed with part numbers

listed on the pages indicated. Refer to the Index Section for explanations of codes and abbreviations.

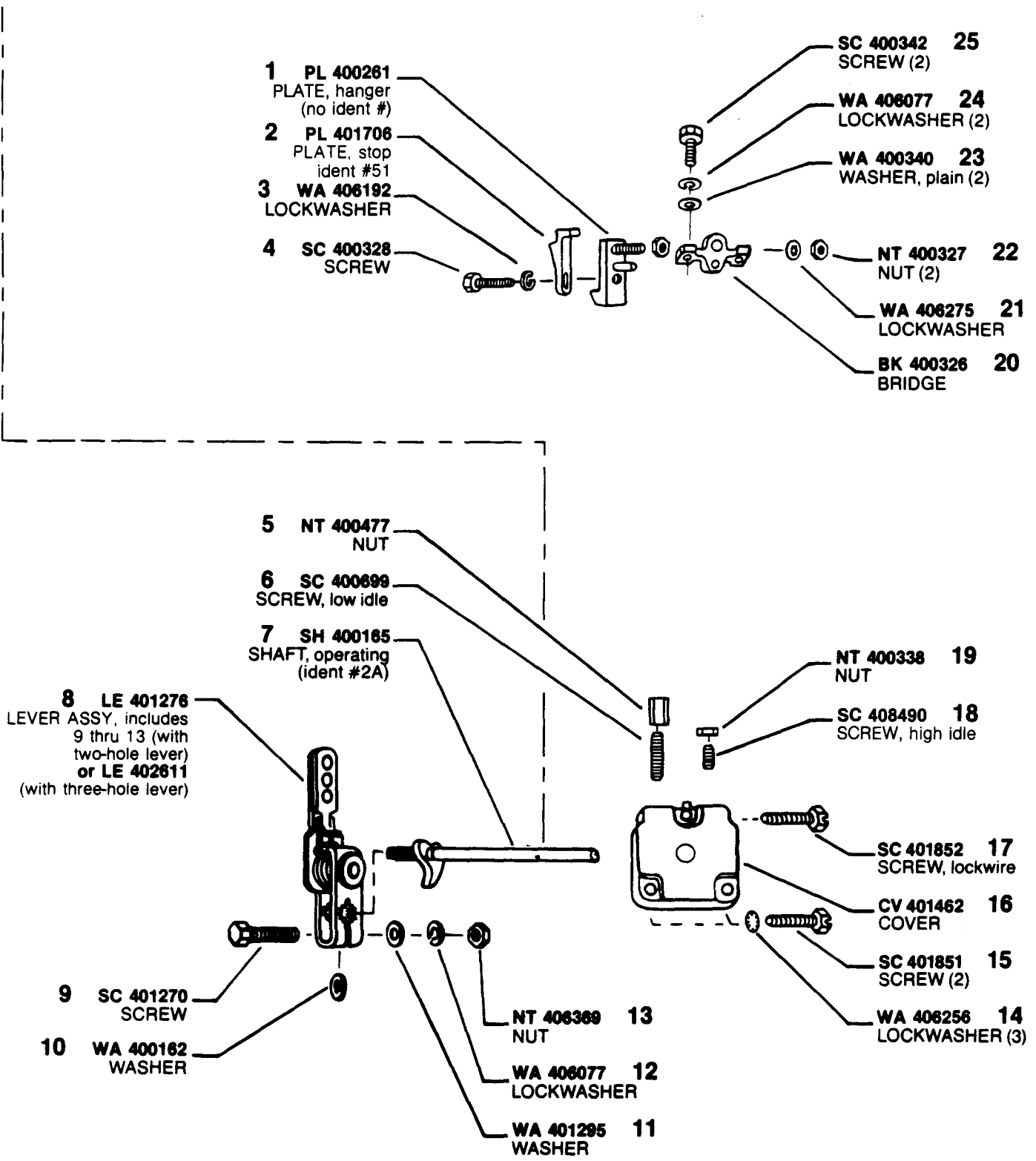


# MODEL 300 #PLM 450404

**ASSY GMS 450396A**  
GOVERNOR ASSY



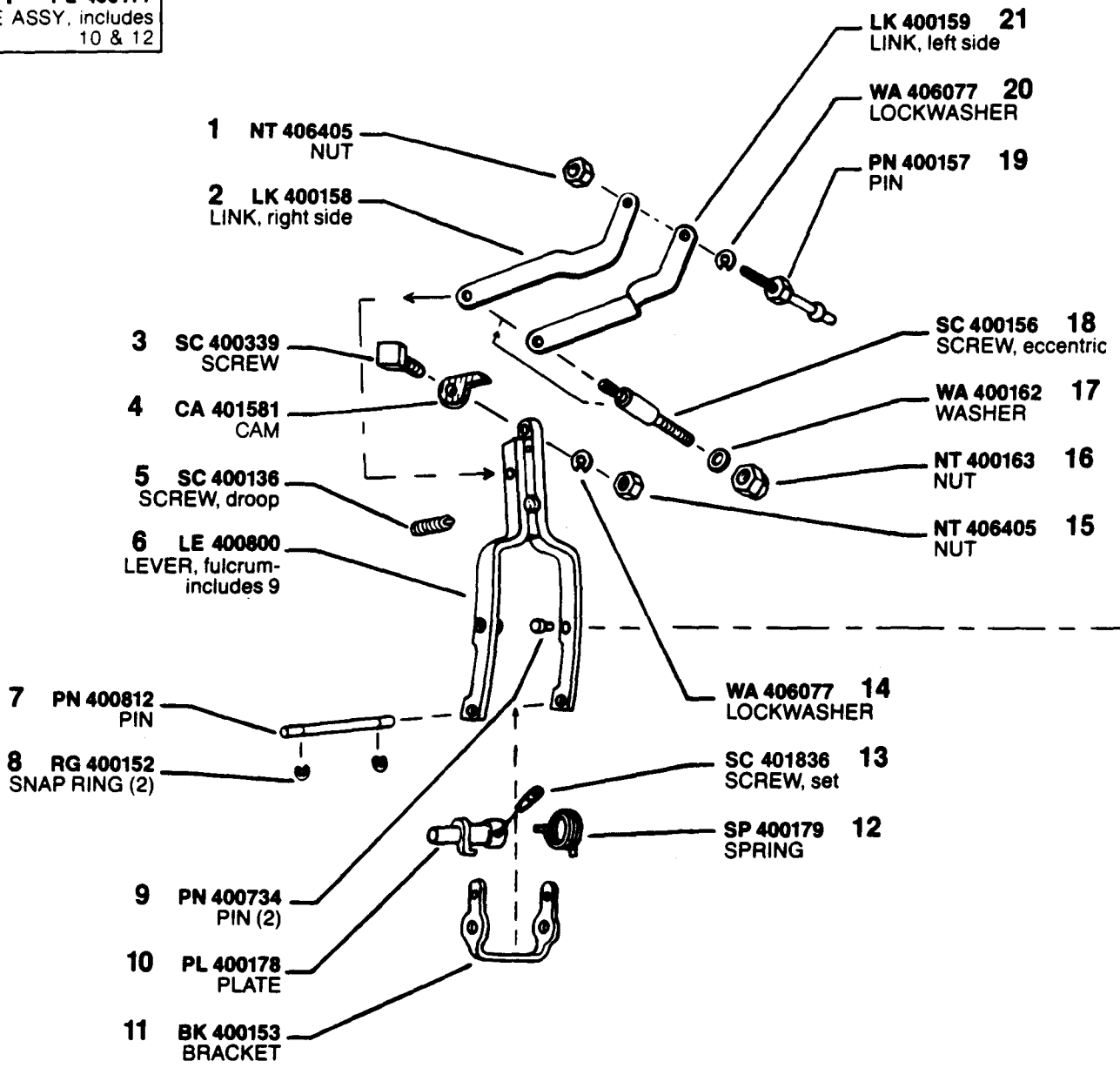
# MODEL 300 #PLM 450404



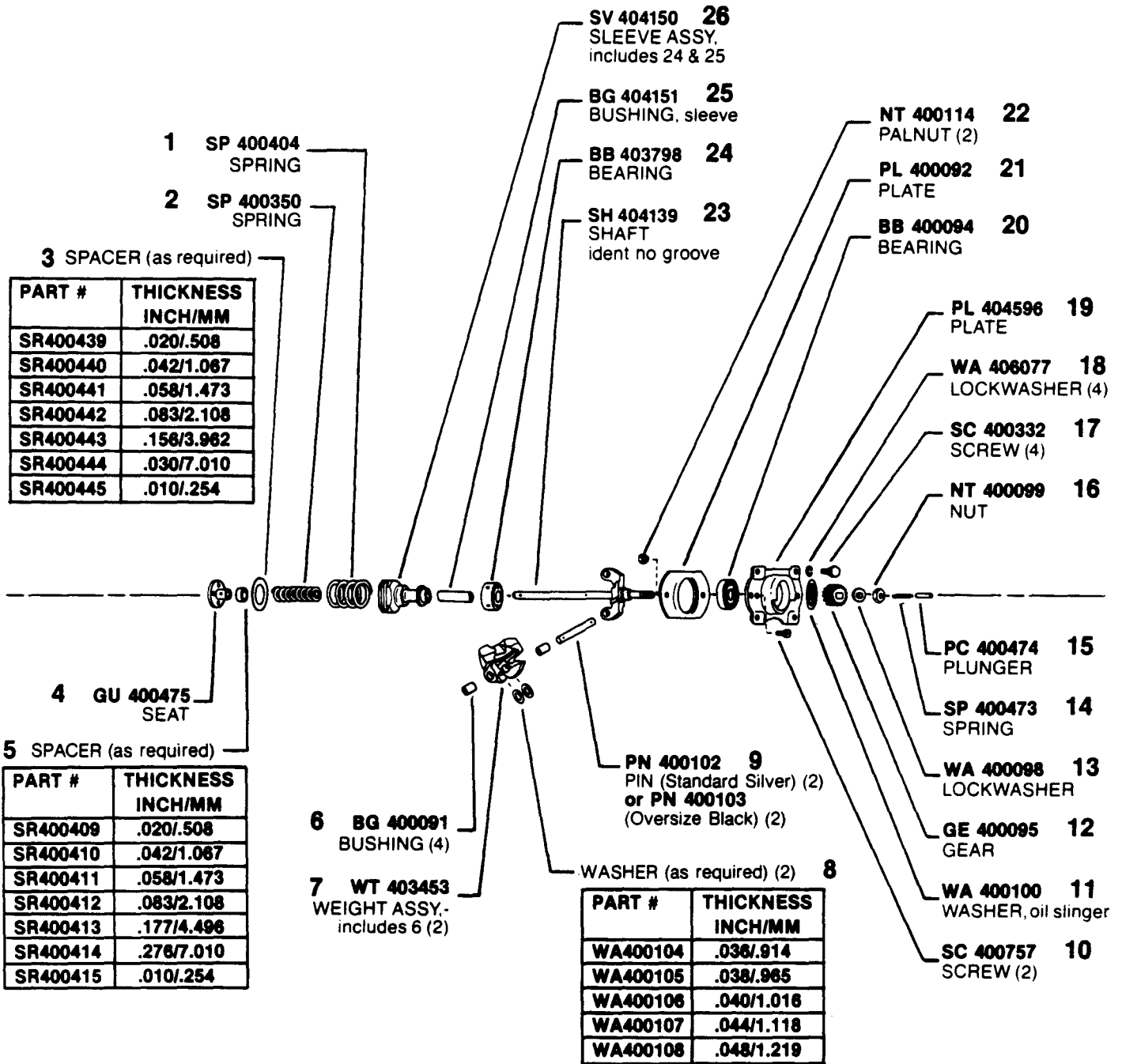
MODEL 300 #PLM 450404

**ASSY LE 400782**  
 LEVER ASSY, fulcrum-  
 includes 1, 2, 6 thru 9  
 11 & 16 thru 21

**ASSY PL 400177**  
 PLATE ASSY, includes  
 10 & 12

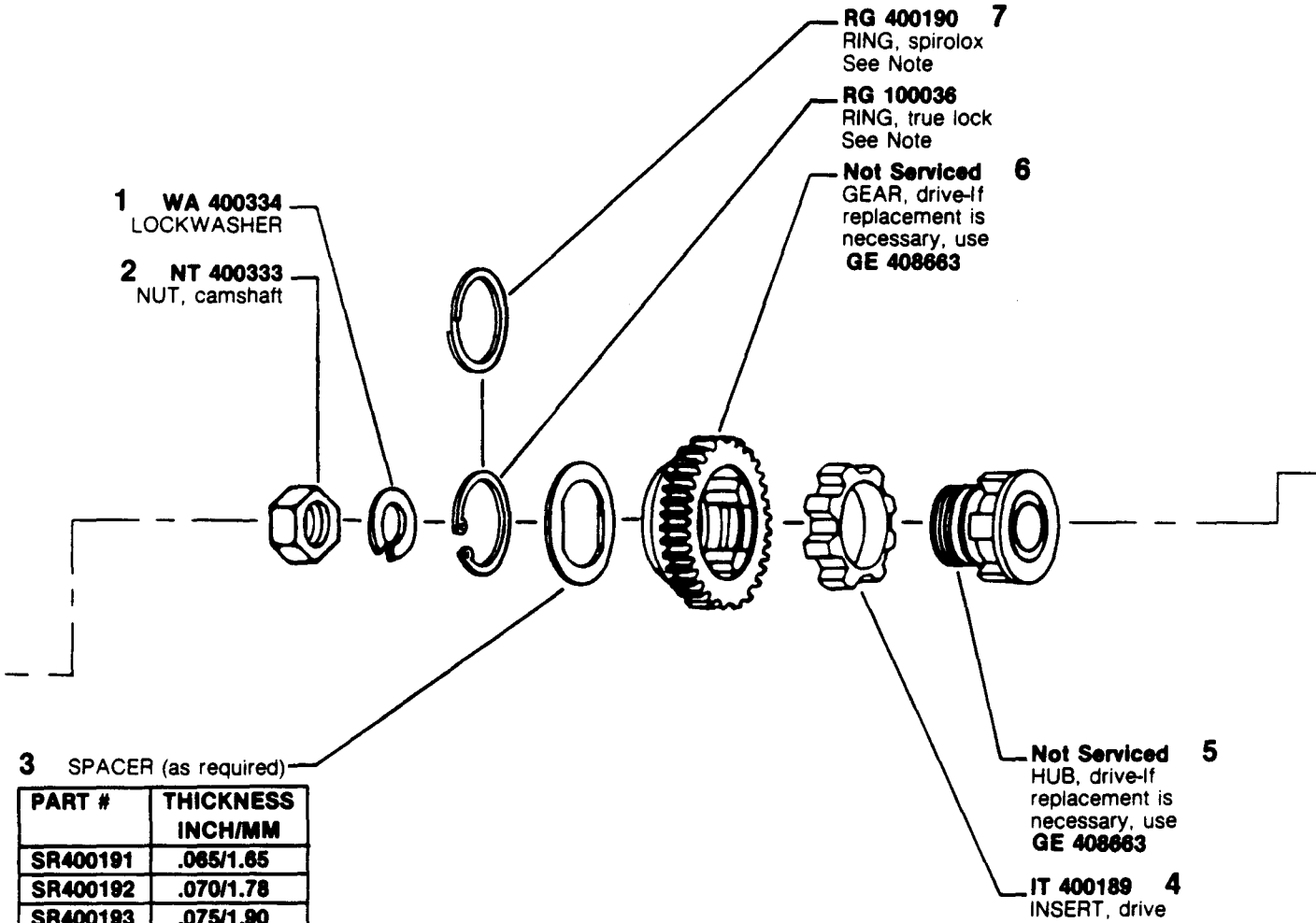


MODEL 300 #PLM 450404



## MODEL 300 #PLM 450404

**ASSY GE 408663  
(RUBBER DRIVE)**  
DRIVE ASSY, includes 3 thru 7



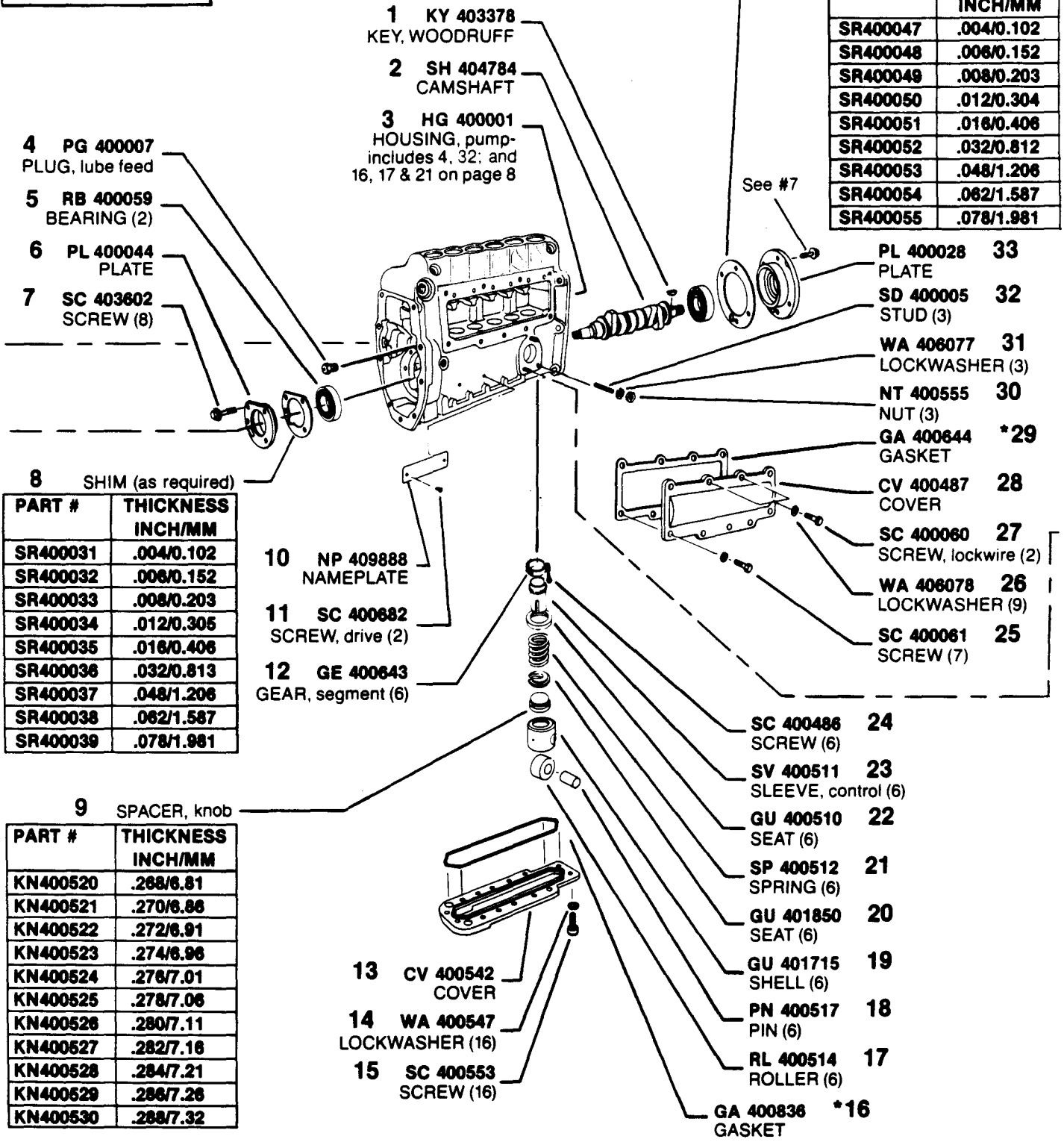
3 SPACER (as required)

PART #	THICKNESS INCH/MM
SR400191	.065/1.65
SR400192	.070/1.78
SR400193	.075/1.90
SR400194	.080/2.03
SR400195	.085/2.16
SR400196	.0825/1.59
SR400197	.080/1.52
SR400198	.0675/1.71
SR400199	.0725/1.84
SR400200	.0775/1.97
SR400201	.0825/2.10
SR400202	.0875/2.22

#7 NOTE: Earlier rubber drive assy GE 400182 used RG 400190 (Spirolox ring), later assy GE 408663 using RG 100036 (true lock ring). Spirolox & true lock rings are NOT interchangeable.

**MODEL 300 #PLM 450404**

**ASSY TP 401716**  
TAPPET ASSY. includes  
9 & 17-19 (6)



SHIM (as required) 34

PART #	THICKNESS INCH/MM
SR400047	.004/0.102
SR400048	.006/0.152
SR400049	.008/0.203
SR400050	.012/0.304
SR400051	.016/0.406
SR400052	.032/0.812
SR400053	.048/1.206
SR400054	.062/1.587
SR400055	.078/1.981

8 SHIM (as required)

PART #	THICKNESS INCH/MM
SR400031	.004/0.102
SR400032	.006/0.152
SR400033	.008/0.203
SR400034	.012/0.305
SR400035	.016/0.406
SR400036	.032/0.813
SR400037	.048/1.206
SR400038	.062/1.587
SR400039	.078/1.981

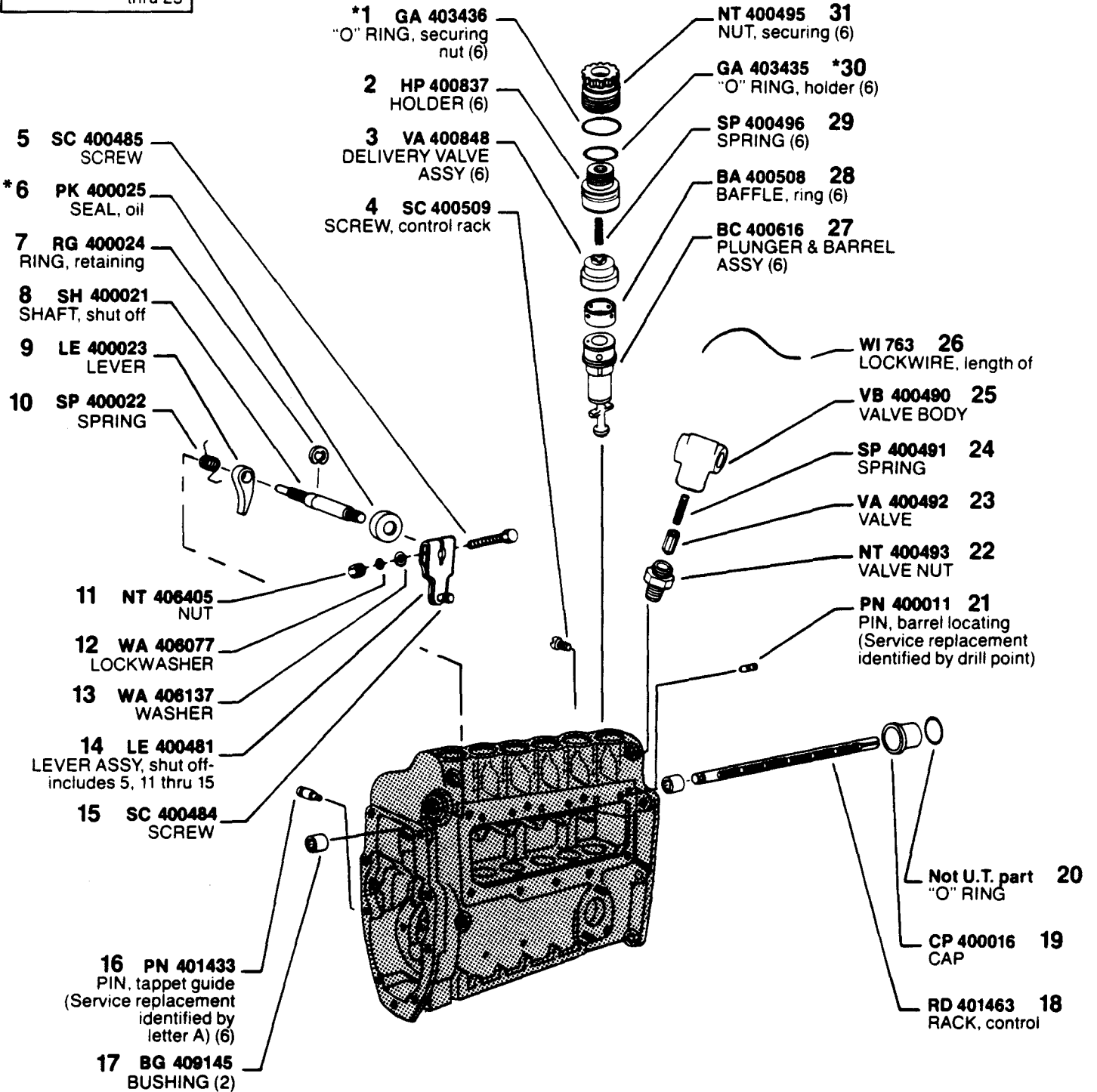
9 SPACER, knob

PART #	THICKNESS INCH/MM
KN400520	.268/6.81
KN400521	.270/6.86
KN400522	.272/6.91
KN400523	.274/6.96
KN400524	.276/7.01
KN400525	.278/7.06
KN400526	.280/7.11
KN400527	.282/7.16
KN400528	.284/7.21
KN400529	.286/7.26
KN400530	.288/7.32

\*Denotes parts in Gasket Kit, KT 401705.

## MODEL 300 #PLM 450404

**ASSY VA 400683**  
**OVERFLOW VALVE**  
 ASSY-includes 22  
 thru 25



\*Denotes parts in Gasket Kit KT 401705.

## MODEL 300 #PLM 450404

**ASSY SPT 400710  
SUPPLY PUMP ASSY**

1 HG 400758  
HOUSING ASSY,  
includes 8 & 12

2 PN 400605  
PIN

3 SP 400708  
SPRING

4 GU 400602  
TAPPET

5 RL 400603  
ROLLER

\*6 GA 400554  
GASKET

7 PN 400604  
PIN

8 SPINDLE

**PLUNGER ASSY 12**

PART #	THICKNESS MM	COLOR CODE
PC400561	24.984/24.989	Two white dots
PC400562	24.986/24.991	Two green dots
PC400563	24.988/24.993	Two yellow dots
PC400564	24.990/24.995	Two red dots
PC400565	24.992/24.997	Two blue dots
PC400566	25.083/25.087	Three black dots
PC400567	25.085/25.089	Two black dots
PC400568	25.089/25.093	Two red & two black dots

PART #	THICKNESS MM	COLOR CODE
SL400581	4.993/4.995	Red one end
SL400582	4.995/4.997	Blue one end
SL400583	4.997/4.999	Yellow one end
SL400743	5.020/5.022	Yellow one end White one end
SL400744	5.044/5.046	Yellow one end Black one end
SL400745	5.067/5.069	White one end Black one end
SL400584	5.087/5.089	White one end
SL400585	5.089/5.091	Black one end
SL400586	5.091/5.093	Green one end
SL400587	5.093/5.095	Alum. one end
SL400746	5.116/5.118	Alum. one end Red one end
SL400747	5.139/5.141	Alum. one end Blue one end
SL400748	5.162/5.164	Alum. one end Yellow one end
SL400589	5.189/5.191	Red both ends
SL400590	5.191/5.193	Blue both ends
SL400591	5.193/5.195	Yellow both ends
SL400592	5.195/5.197	Black both ends

**SPINDLE (requires reaming)**

PART #	THICKNESS MM	COLOR CODE
SL7912-1	5.557/5.560	Red & blue one end
SL7912-2	5.561/5.564	Red & green one end
SL7912-3	5.565/5.568	Red & yellow one end
SL7912-4	5.569/5.572	Blue & green one end

SC 400753 11  
SCREW

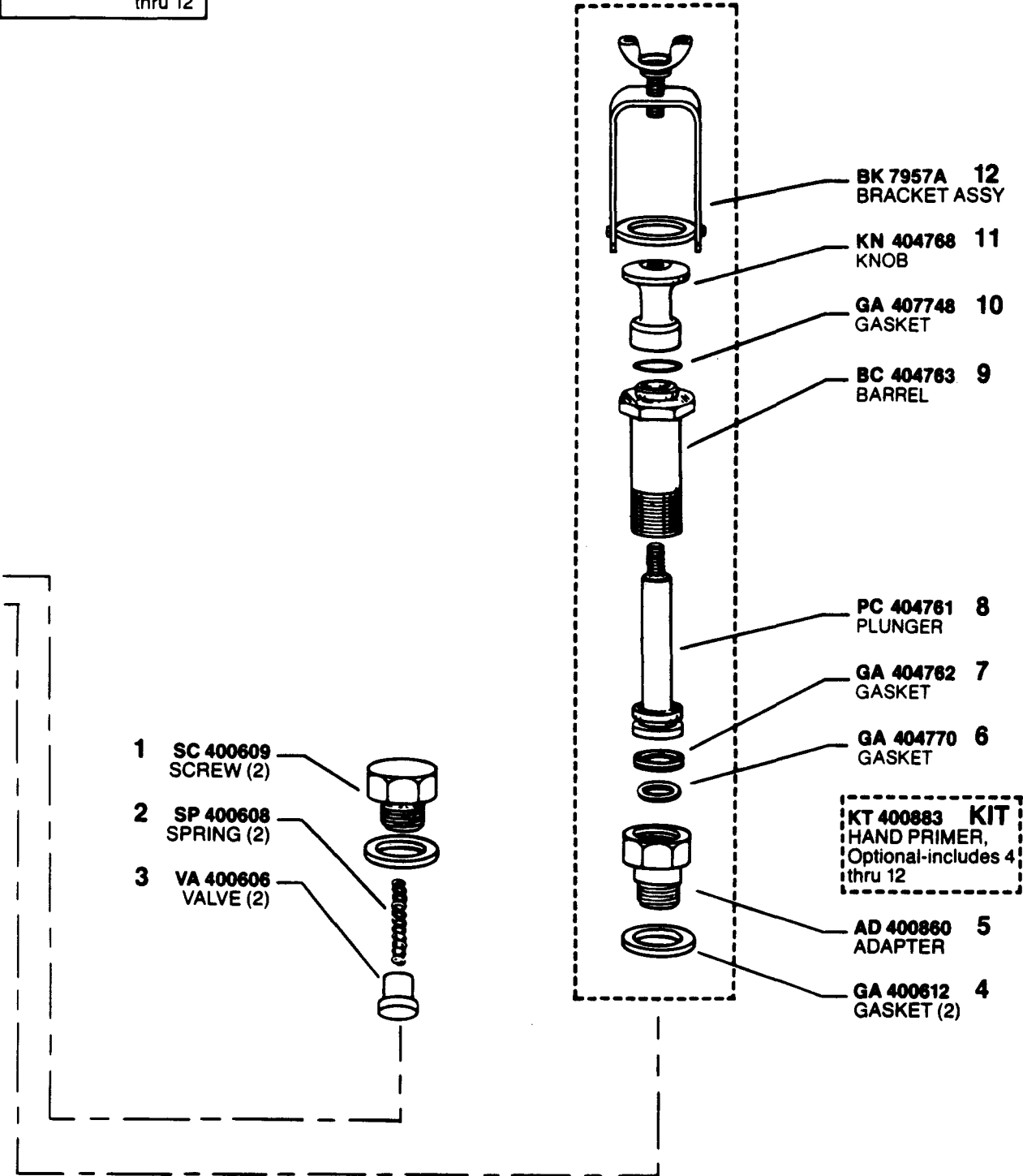
GA 400610 10  
GASKET

SP 400709 9  
SPRING

\*Denotes parts in Gasket Kit KT 401705.

# MODEL 300 #PLM 450404

**ASSY MP 404760**  
**MANUAL PRIMER**  
 ASSY-includes 6  
 thru 12



## MODEL 300 #PLM 450404

