

**6572**

**A thru D**

**PUMP ROTATION:**  
Clockwise: Firing Order: 1-5-3-6-2-4  
**DRIVE END:**  
R. H. Side  
**TIMED FOR PORT CLOSING**  
**SPECIAL FEATURES:**

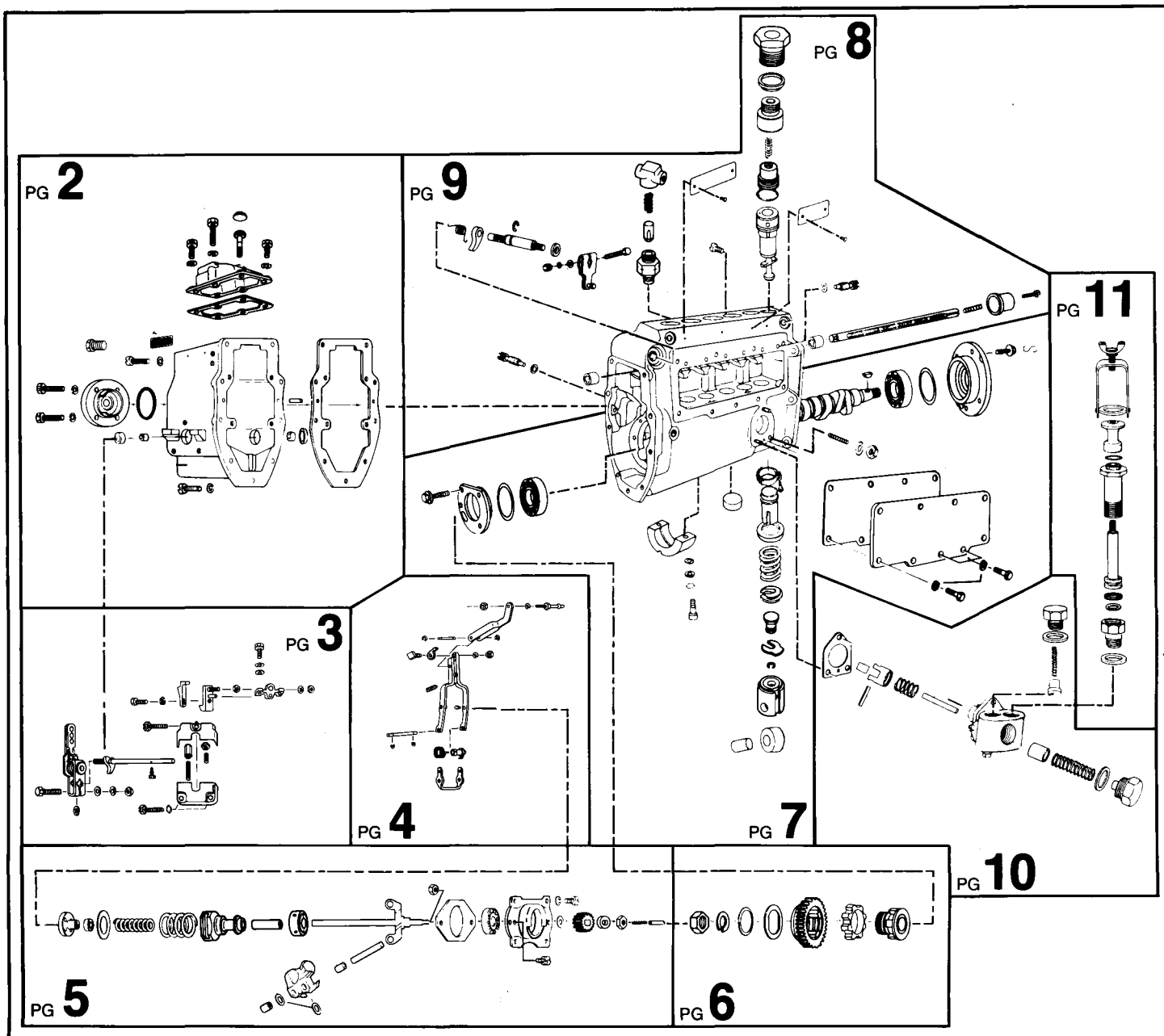
**MACK**  
**APE 6BB 110T 6572A thru D**  
**Special Information:**



### SERVICE PARTS

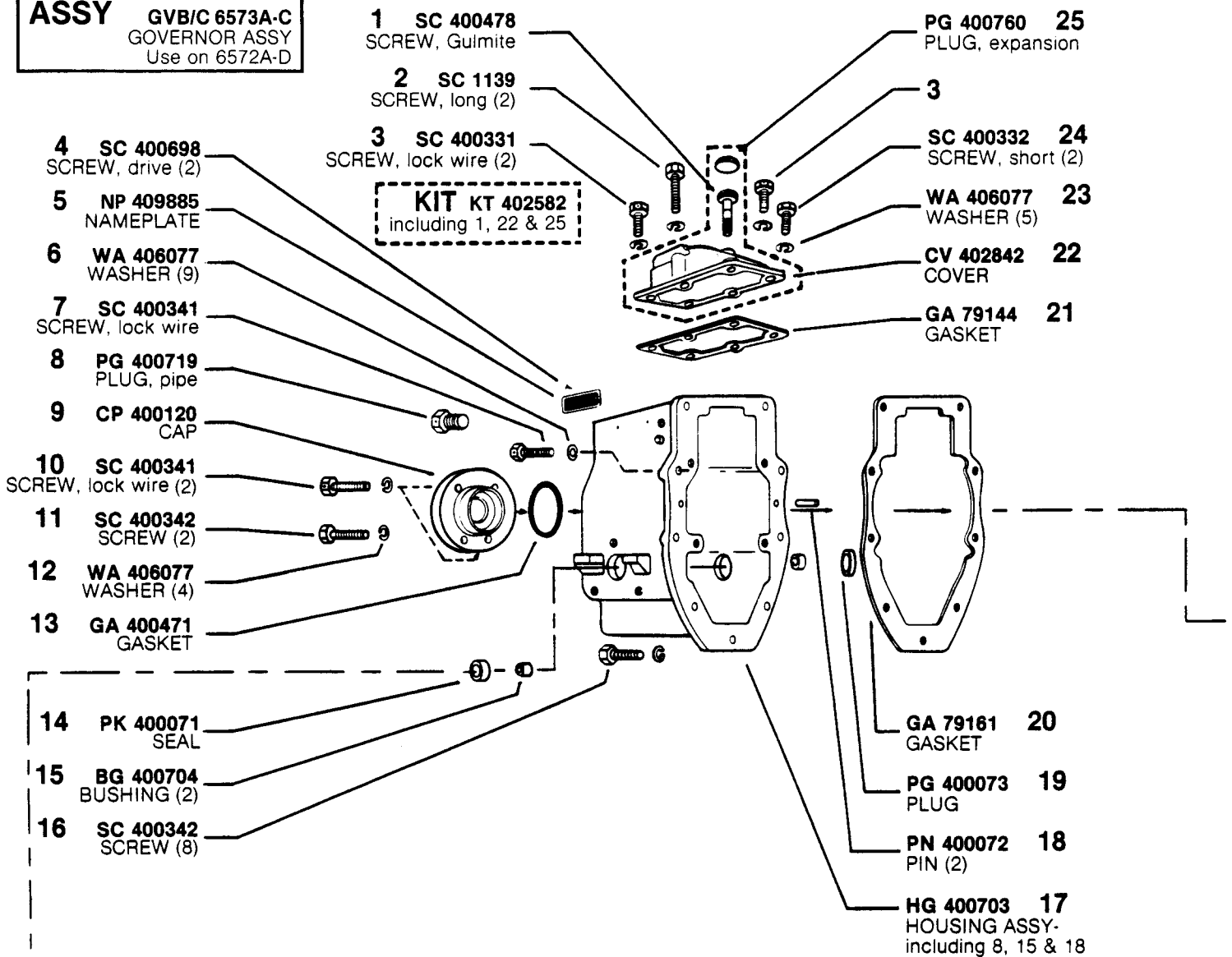
Following are all parts, part numbers, pump codes and calibrations for the *Model: APE 6BB 110T 6572A thru D*. The exploded view drawing below is detailed with part numbers

listed on the pages indicated. Refer to the Index Section for explanations of codes and abbreviations.



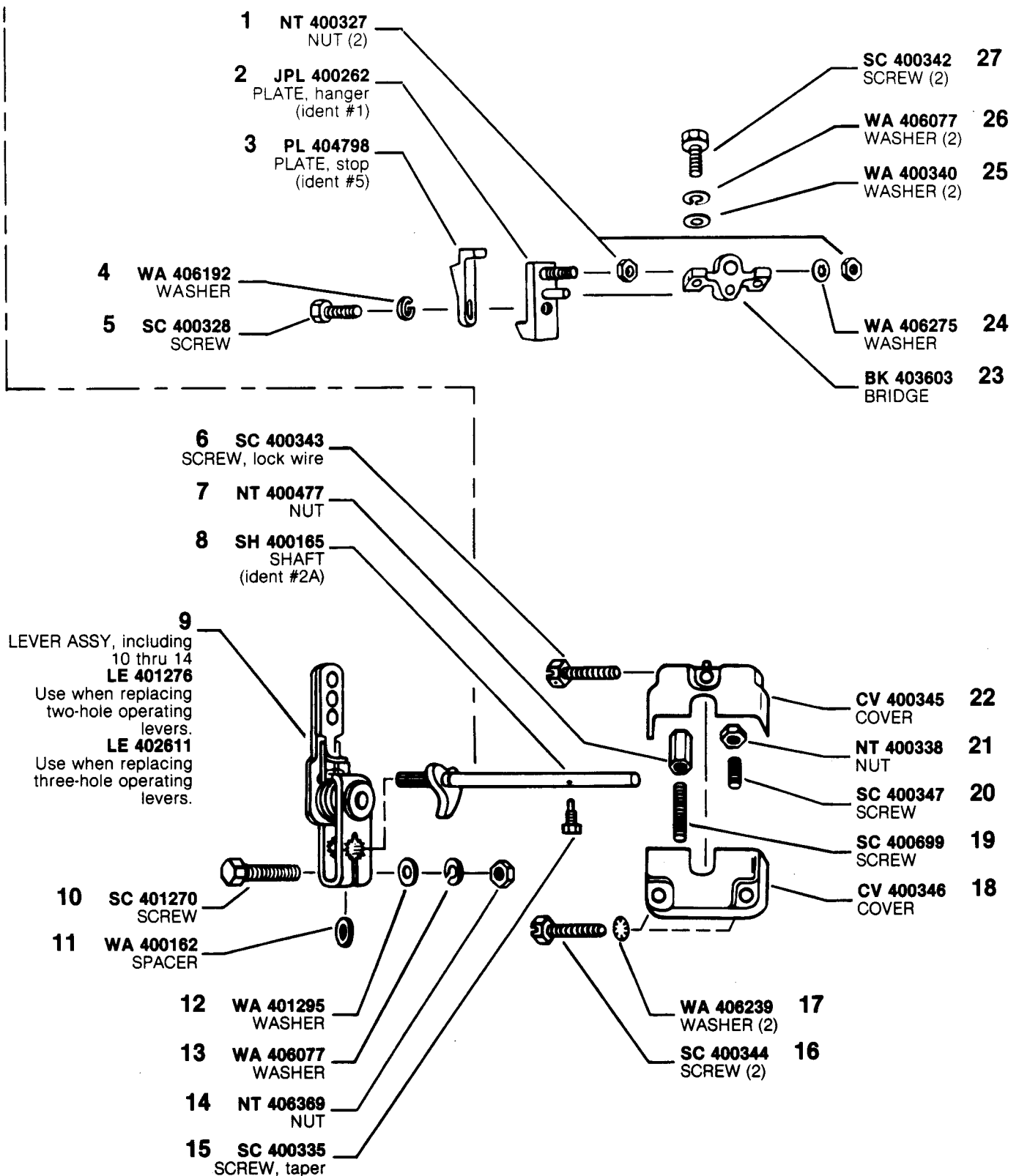
# MODEL APE 6BB 110T 6572A-D

**ASSY** GVB/C 6573A-C  
GOVERNOR ASSY  
Use on 6572A-D



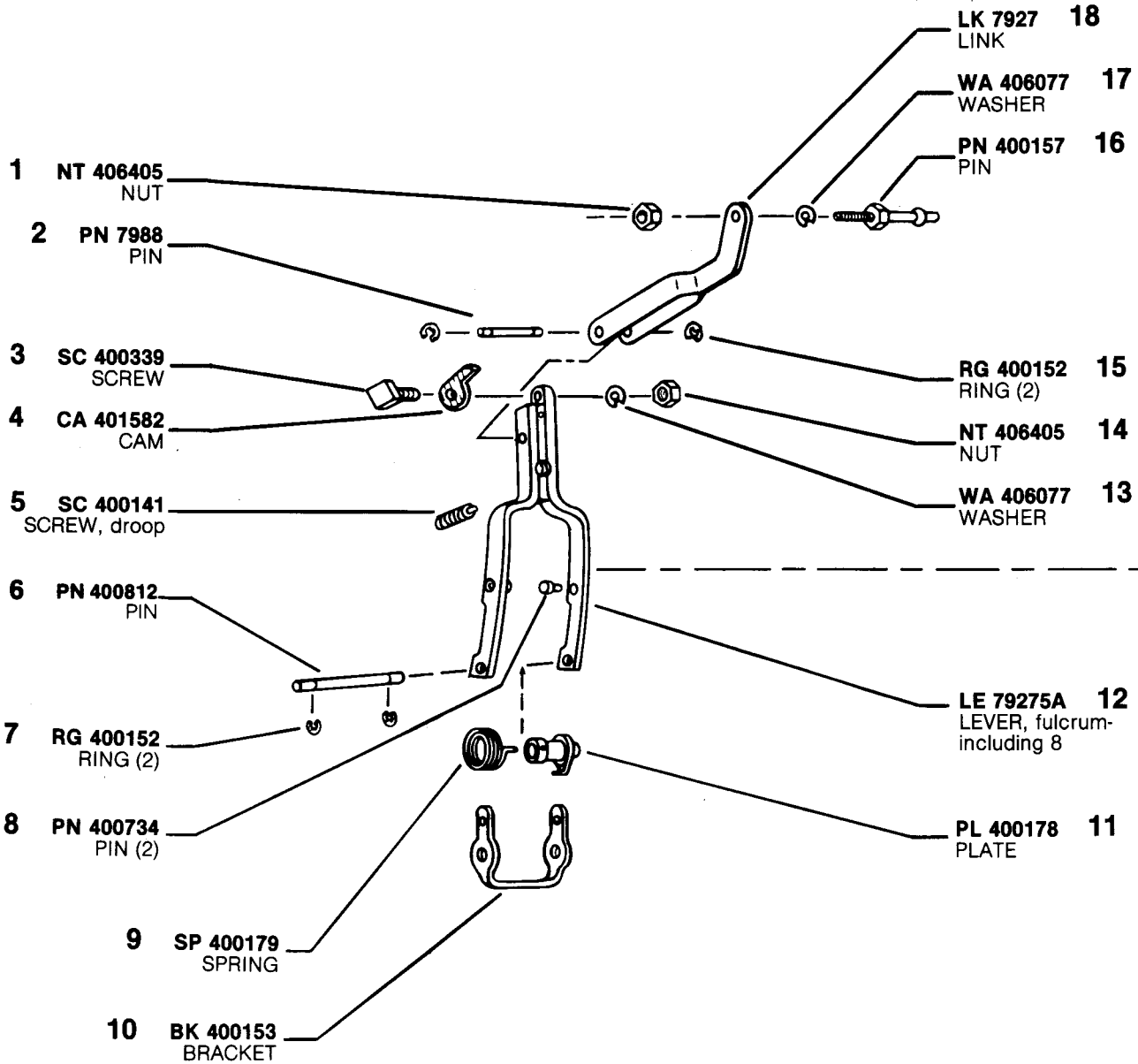
\*Quantity used is one, unless otherwise indicated in parenthesis ( ) following description of part.

## MODEL APE 6BB 110T 6572A-D

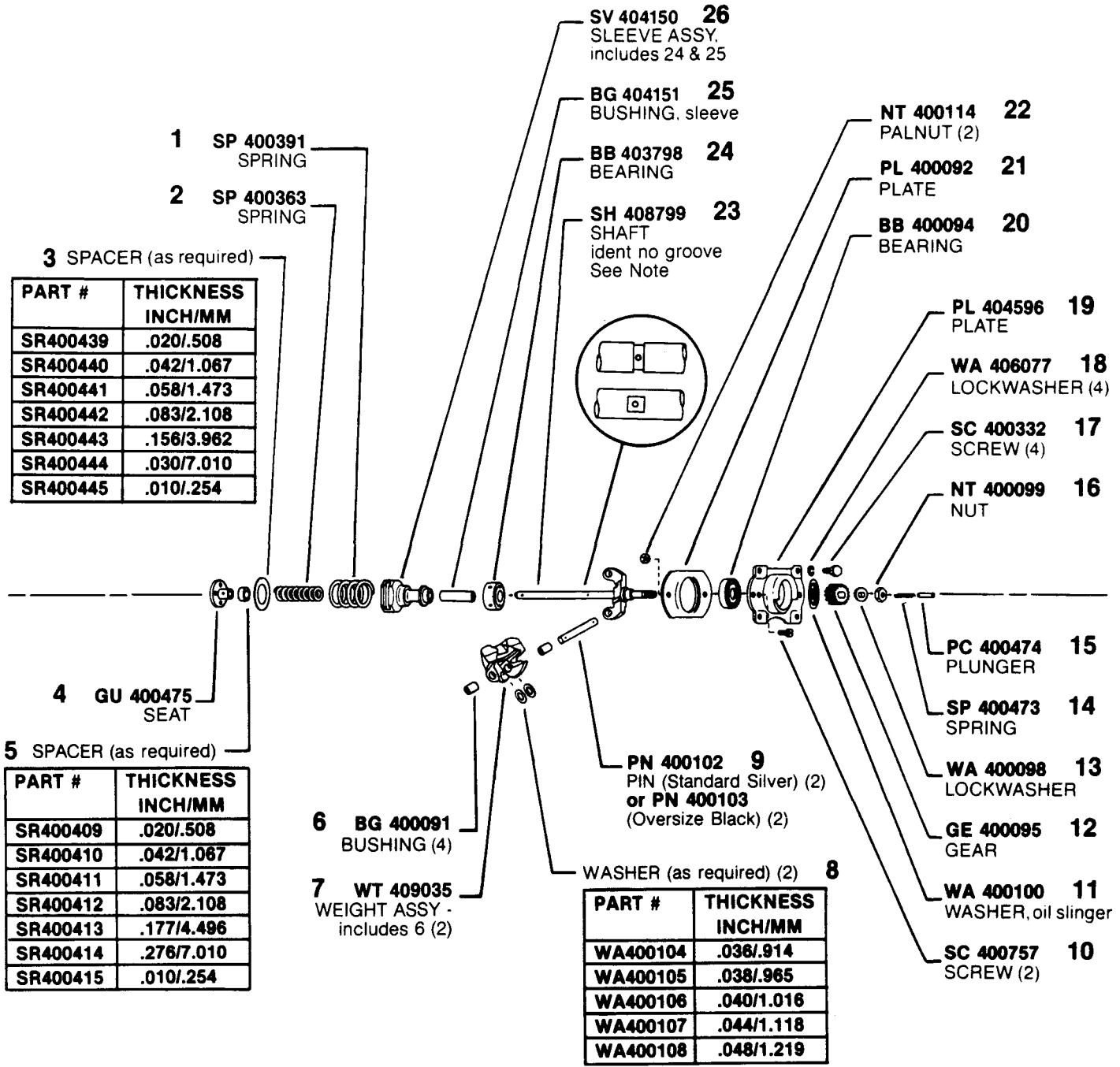


## MODEL APE 6BB 110T 6572A-D

**ASSY LE 79289-4A**  
 LEVER ASSY, including  
 6, 7, 8, 10 & 12



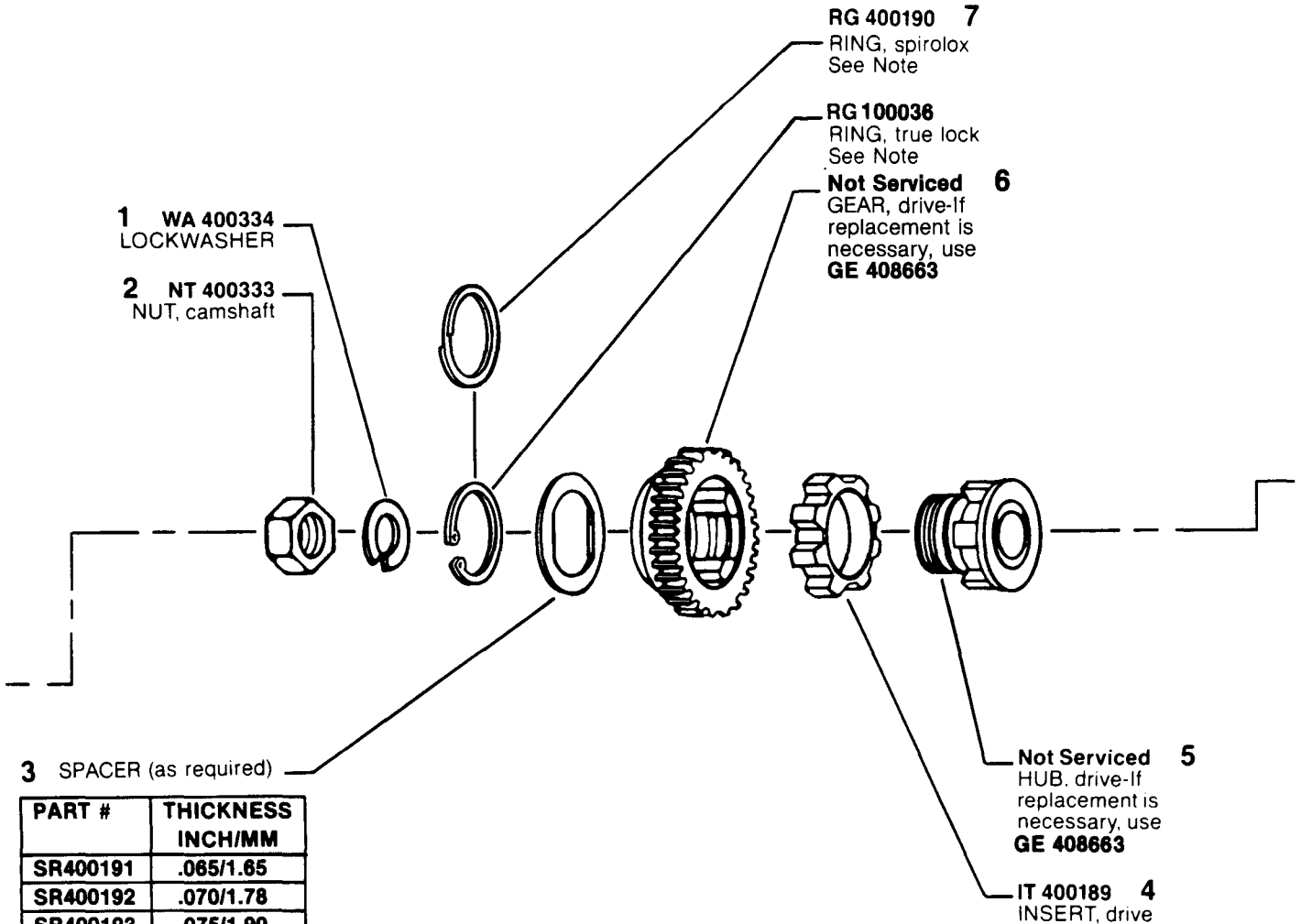
MODEL APE 6BB 110T 6572A-D



NOTE: When replacing shaft (#23 w/groove) with latest shaft (SH404145 no groove) BG404151 (25) MUST be used. Shaft with groove used BG400118.

# MODEL APE 6BB 110T 6572A-D

**ASSY GE 408663  
(RUBBER DRIVE)**  
DRIVE ASSY, includes  
3 thru 7.



PART #	THICKNESS INCH/MM
SR400191	.085/1.65
SR400192	.070/1.78
SR400193	.075/1.90
SR400194	.080/2.03
SR400195	.085/2.16
SR400196	.0625/1.59
SR400197	.060/1.52
SR400198	.0675/1.71
SR400199	.0725/1.84
SR400200	.0775/1.97
SR400201	.0825/2.10
SR400202	.0875/2.22

#7 NOTE: Earlier rubber drive assy GE 400182 used RG 400190 (Spirolox ring), later assy GE 408663 using RG 100036 (true lock ring). Spirolox & true lock rings are NOT interchangeable.

**ASSY** NOTE: Pumps equipped with GE 7992A "Friction Clutch" refer to Service Instructions Model 6BBT Parts Bulletin P4 for Parts.

## MODEL APE 6BB 110T 6572A-D

**ASSY TP 7651A**  
TAPPET ASSY-  
including 12-17 (6)

**ASSY HG 761246-1A**  
HOUSING ASSY-  
including 31; 4 on page  
8; and 8 thru 10, 17 &  
18 on page 9  
See note

**3** SPACER (as required)

PART #	THICKNESS INCH/MM
SR 7611-1	.008/0.2
SR 7611-2	.012/0.3
SR 7611-3	.016/0.4
SR 7611-4	.004/0.1
SR 7611-5	.006/0.15
SR 7611-6	.002/0.05
SR 7611-7	.032/0.8

**4** SC 403602  
SCREW (4)

**5** PL 76117  
PLATE

**6** (see note)  
BEARING, center

**\*7** GA 5264  
GASKET (2)

**8** WA 1518  
WASHER (2)

**9** WA 406006  
LOCKWASHER (2)

**10** SC 400064  
SCREW (2)

**11** PG 7669  
PLUG (6)

**12** KN 7610  
KNOB (6)

**13** SPACER  
(as required)

PART #	THICKNESS INCH/MM
SR 7610-1	.050/1.270
SR 7610-2	.054/1.372
SR 7610-3	.058/1.473
SR 7610-4	.062/1.575
SR 7610-5	.066/1.676
SR 7610-6	.046/1.168
SR 7610-7	.048/1.219
SR 7610-8	.052/1.321

PART #	THICKNESS INCH/MM
SR 7610-9	.058/1.422
SR 7610-10	.060/1.524
SR 7610-11	.064/1.626
SR 7610-15	.042/1.067
SR 7610-16	.044/1.118
SR 7610-17	.068/1.727
SR 7610-18	.072/1.829

**1** KY 403378  
KEY, WOODRUFF  
(Earlier Camshafts  
require KY 764)

**2** SH 404640  
CAMSHAFT  
See note

**RB 1004** **35**  
BEARING (2)

**PL 76113** **34**  
PLATE

**SC 400331** **33**  
SCREW (3)

**WI 763** **32**  
WIRE

**SD 400005** **31**  
STUD (3)

**WA 406077** **30**  
LOCKWASHER (3)

**NT 400555** **29**  
NUT (3)

**GA 76309** **\*28**  
GASKET

**CV 76312** **27**  
COVER

**WA 406078** **26**  
WASHER (9)

**SC 1865** **25**  
SCREW,  
wire seal (2)

**SC 1863** **24**  
SCREW (7)

**GE 400643** **23**  
GEAR (6)

**SC 400486** **22**  
SCREW, gear (6)

**SV 7671** **21**  
SLEEVE (6)

**GU 400510** **20**  
SEAT (6)

**SP 76149** **19**  
SPRING (6)

**GU 402592** **18**  
SEAT (6)

**RG 7618** **17**  
RING, snap (6)

**GU 76159** **16**  
SHELL (6)

**RL 7613A** **15**  
ROLLER (6)

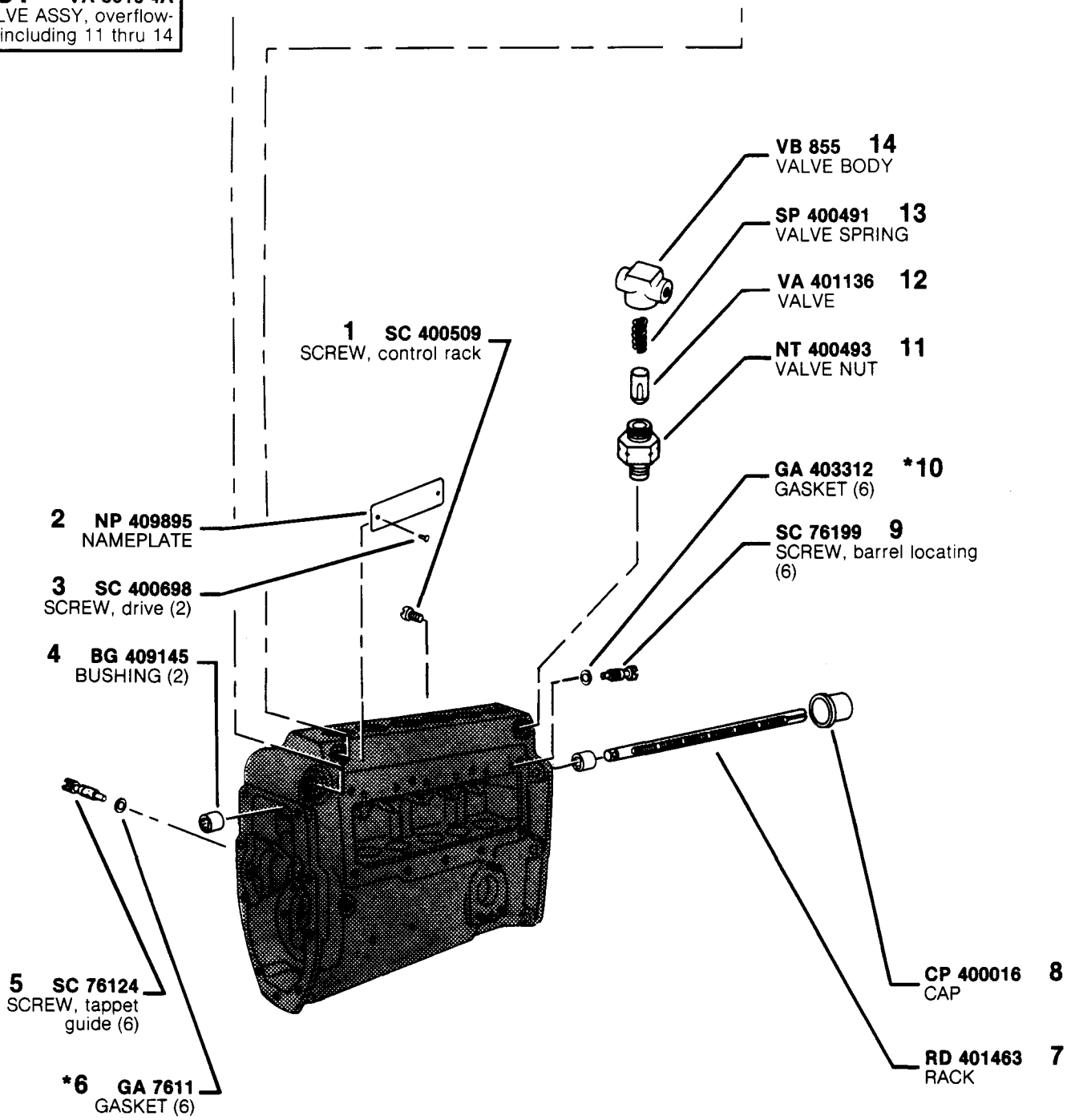
**PN 7648** **14**  
PIN (6)

NOTE: Latest pump housings and camshafts do not allow use of center bearing. If bearing is not to be used, refer to note on page 13 (PG 400760 information)

\*Denotes parts included in "Pump & Governor Repair Gasket Kit" KT 76399-2.

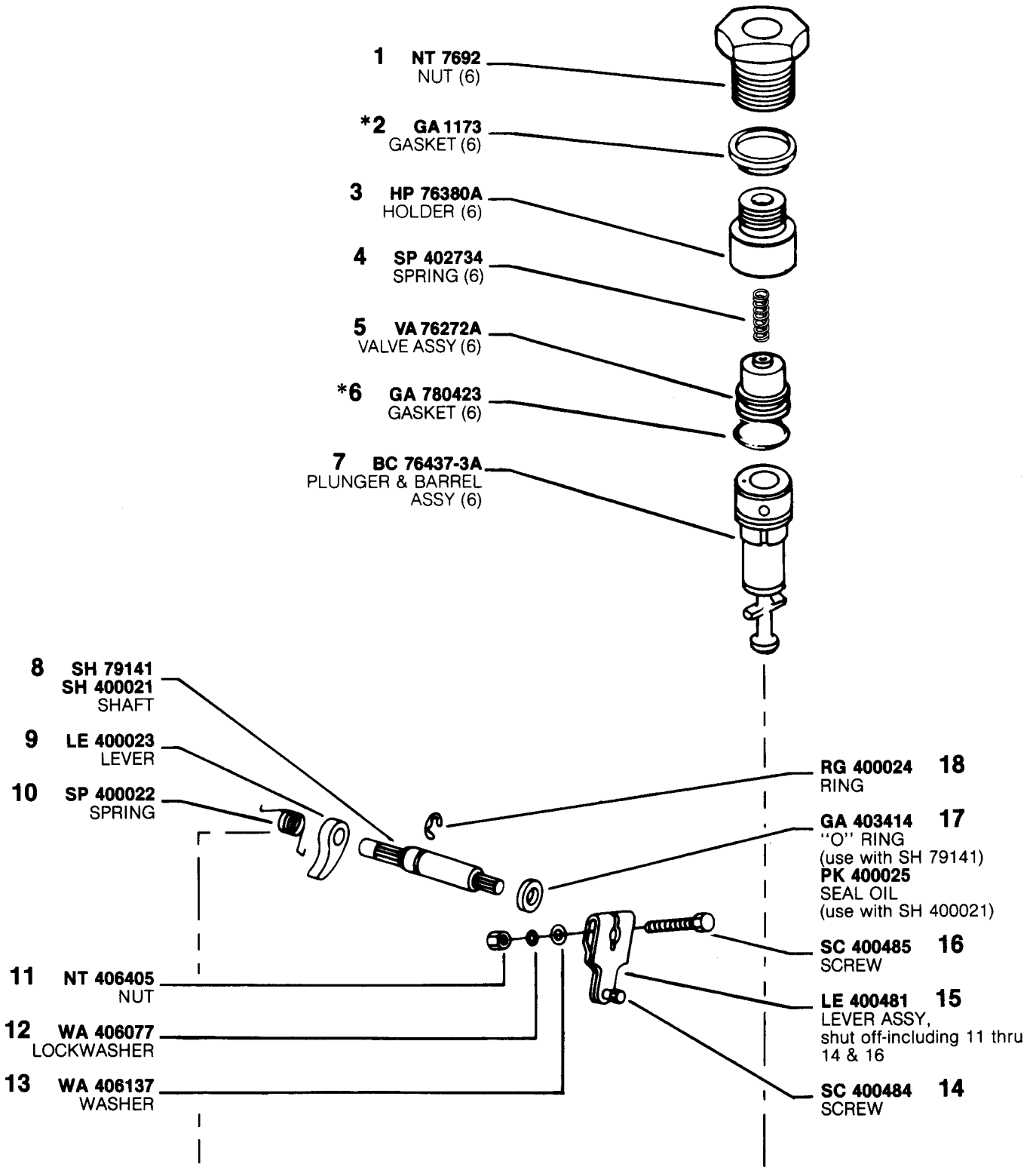
# MODEL APE 6BB 110T 6572A-D

**ASSY VA 8516-4A**  
 VALVE ASSY, overflow-  
 including 11 thru 14



\*Denotes parts included in "Pump & Governor Repair Gasket Kit" KT 76399-2.

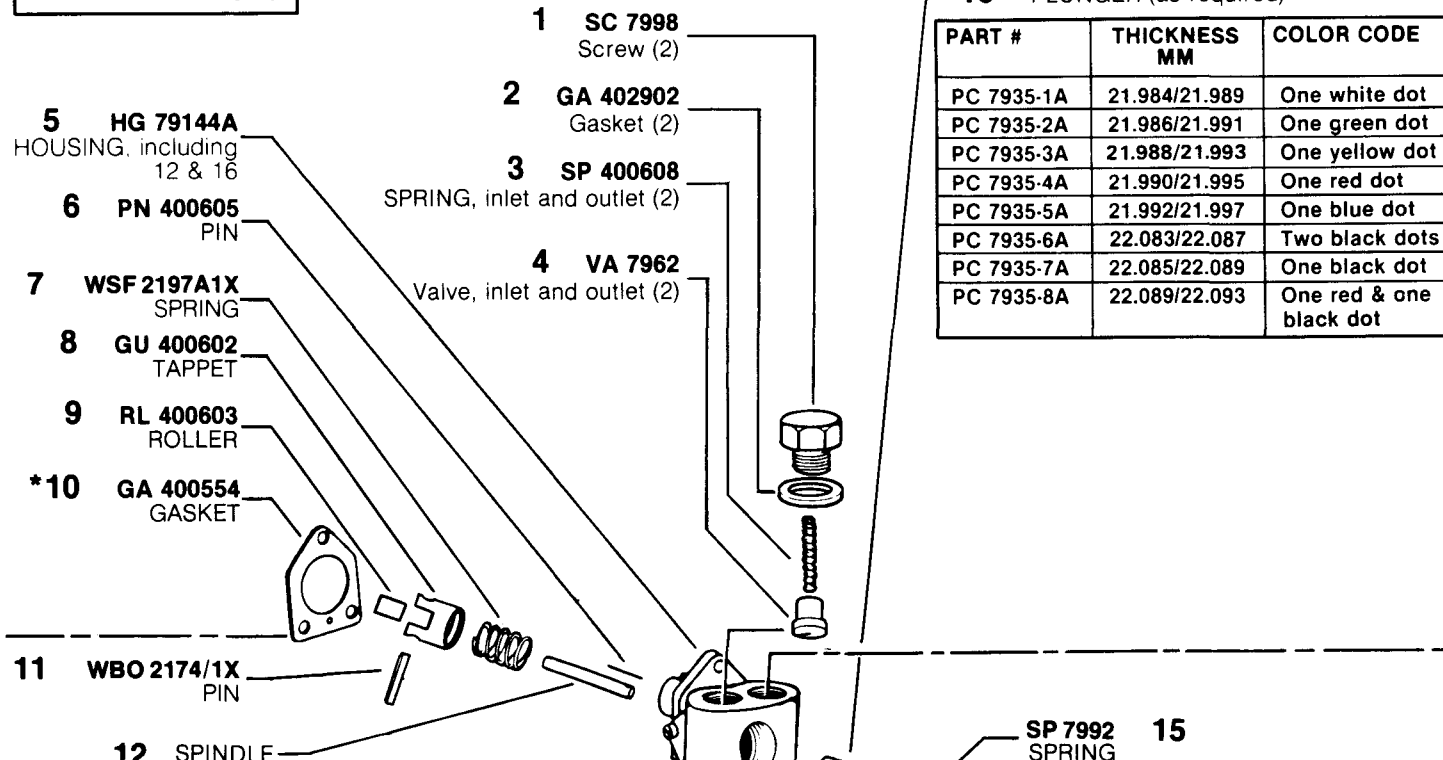
## MODEL APE 6BB 110T 6572A-D



\*Denotes parts included in "Pump & Governor Repair Gasket Kit" KT 76399-2.

# MODEL APE 6BB 110T 6572A-D

**ASSY SPA 22B2**  
PUMP ASSY, supply-  
including 1 thru 9 & 11  
thru 16



PART #	THICKNESS MM	COLOR CODE
SL 798-1	4.993/4.995	Red — one end
SL 798-2	4.995/4.997	Blue — one end
SL 798-3	4.997/4.999	Yellow — one end
SL 795-1	5.020/5.022	Yellow — one end White — one end
SL 795-2	5.044/5.046	Yellow — one end Black — one end
SL 795-3	5.067/5.069	White — one end Black — one end
SL 798-4	5.087/5.089	White — one end
SL 798-5	5.089/5.091	Black — one end
SL 798-6	5.091/5.093	Green — one end
SL 798-7	5.093/5.095	Aluminum — one end
SL 795-4	5.116/5.118	Aluminum — one end Red — one end
SL 795-5	5.039/5.141	Aluminum — one end Blue — one end
SL 795-6	5.162/5.164	Aluminum — one end Yellow — one end
SL 798-8	5.189/5.191	Red — both ends
SL 798-9	5.191/5.193	Blue — both ends
SL 798-10	5.193/5.195	Yellow — both end
SL 798-11	5.195/5.197	Black — both ends

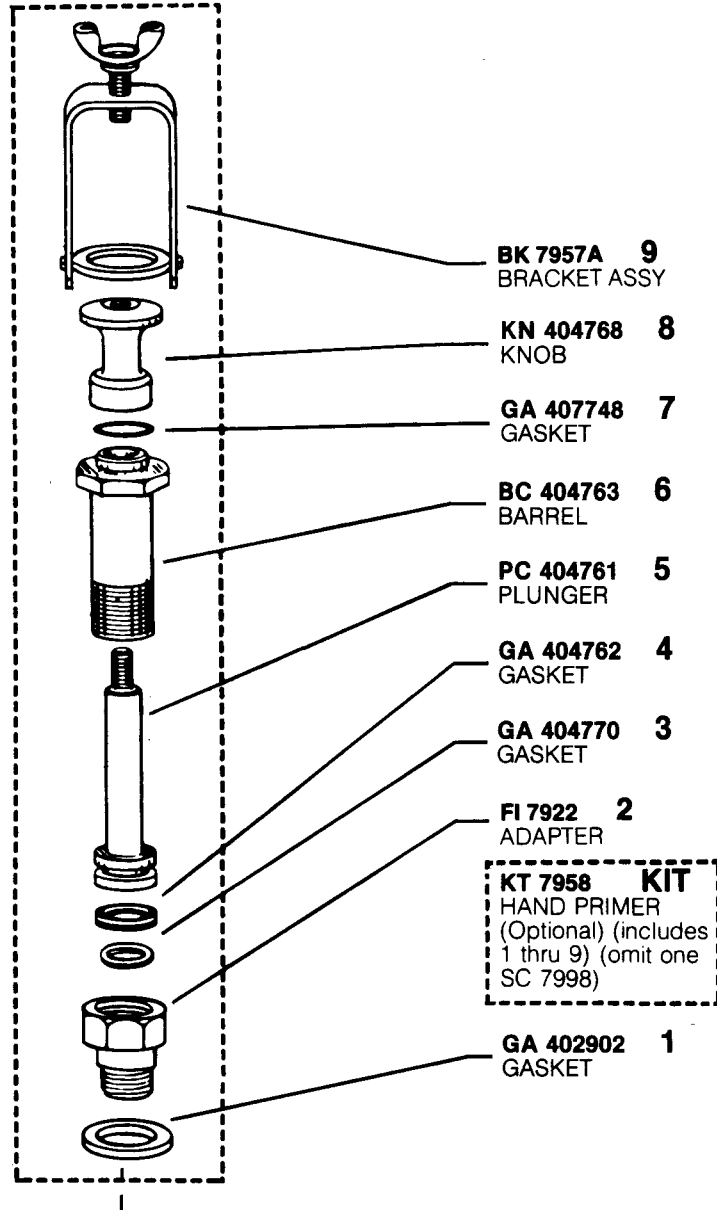
SPINDLE (requires reaming)

PART #	THICKNESS MM	COLOR CODE
SL 793-1	5.557/5.560	Red & Blue — one end
SL 793-2	5.561/5.564	Red & Green — one end
SL 793-3	5.565/5.568	Red & Yellow — one end
SL 793-4	5.569/5.572	Blue & Green — one end

\*Denotes parts included in "Pump & Governor Repair Gasket Kit" KT 76399-2.

# MODEL APE 6BB 110T 6572A-D

**ASSY MP 404760**  
MANUAL PRIMER  
ASSY, including 3 thru 9  
(Optional)



**MODEL APE 6BB 110T 6572A-D**



**NOTE ON ELIMINATION OF CENTER BEARING  
IN APE 6BB FUEL INJECTION PUMPS****INFORMATION:**

Latest APE 6BB fuel injection pumps do not incorporate center bearings and accordingly, pump housings and cam shafts are no longer machined to provide for use of the part.

For earlier type APE 6BB pumps, elimination of the center bearing is **OPTIONAL**.

**CAUTION:** Prior to assembly of a camshaft and center bearing to a pump, first determine that the bearing can physically be used. Insure that there are holes in the housing for the bearing retaining screws and that the journal between cam lobes #3 and #4 has been machined to accept the part.

If a housing has been machined to accept a center bearing and the bearing is not to be utilized, then the screw holes must be plugged per the following instructions:

**INSTRUCTIONS:**

Plug center bearing screw holes as follows:

1. Clean out screw hole counterbores.
2. Press plug, PG 400760 into each hole.
3. Seal plug in hole with Devcon F, or an equivalent epoxy.

**NOTE:** Elimination of the center bearing is only to be undertaken if the initial service problem required removal of the camshaft from the pump.

**THIS NOTE SUPERSEDES MODEL 6BBT, SERVICE BULLETIN S7.**

---

**MODEL APE 6BB 110T 6572A-D**