

6692

A thru G



PUMP ROTATION:
Counterclockwise: Firing Order: 1-5-4-8-6-3-7-2
MOUNT:
Vee
TIMED FOR PORT CLOSING
SPECIAL FEATURES:
2.75:1 Gear Ratio

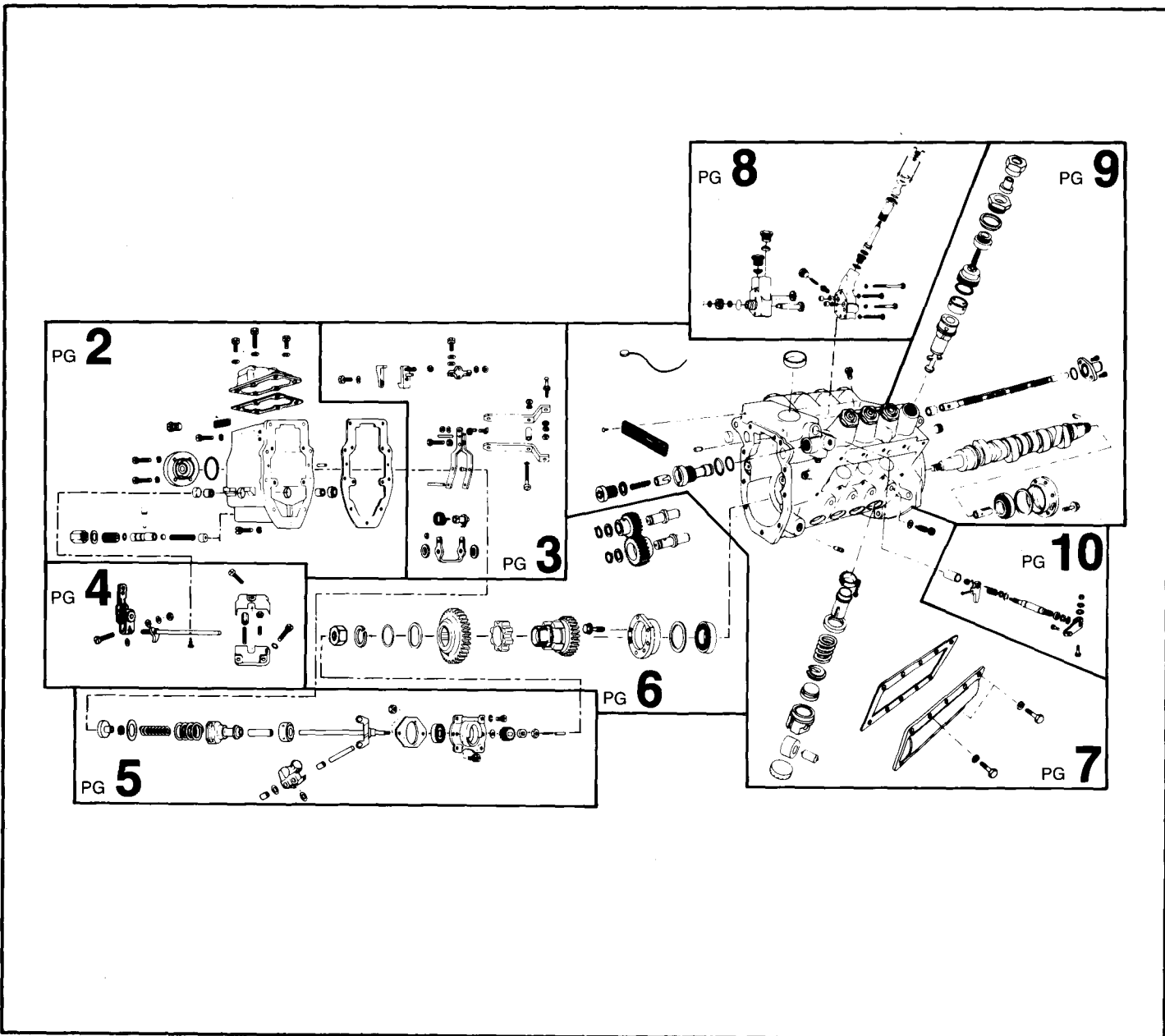
MACK
APE 8VG 110A 6692A thru G

Special Information:

SERVICE PARTS

Following are all parts, part numbers, pump codes and calibrations for the *Model: APE 8VG 110A 6692A thru G*. The exploded view drawing below is detailed with part numbers

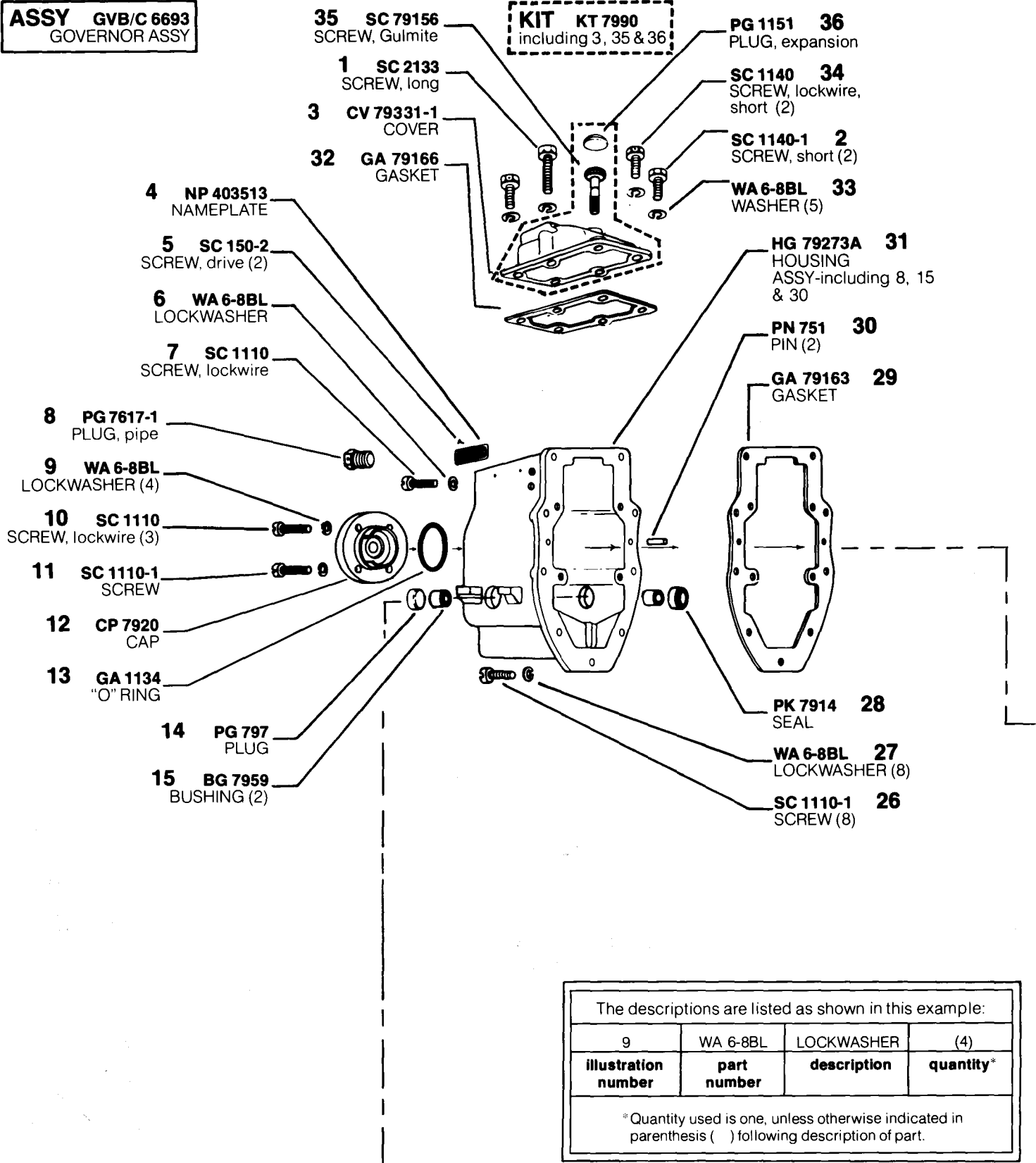
listed on the pages indicated. Refer to the Index Section for explanations of codes and abbreviations.



85121

MODEL APE 8VG 110A 6692A thru G

ASSY GVB/C 6693
GOVERNOR ASSY



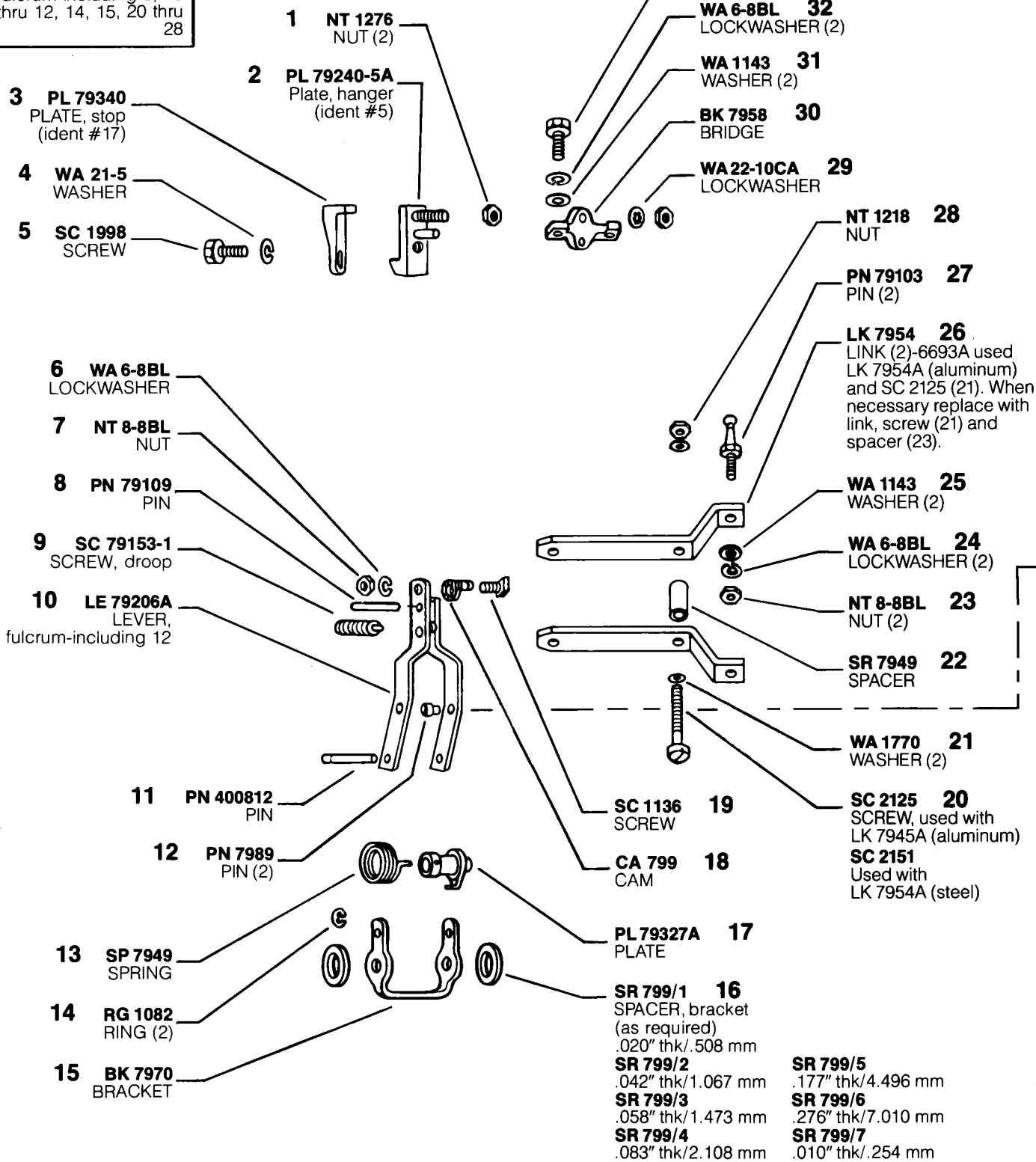
The descriptions are listed as shown in this example:

| 9 | WA 6-8BL | LOCKWASHER | (4) |
|---------------------|-------------|-------------|-----------|
| illustration number | part number | description | quantity* |

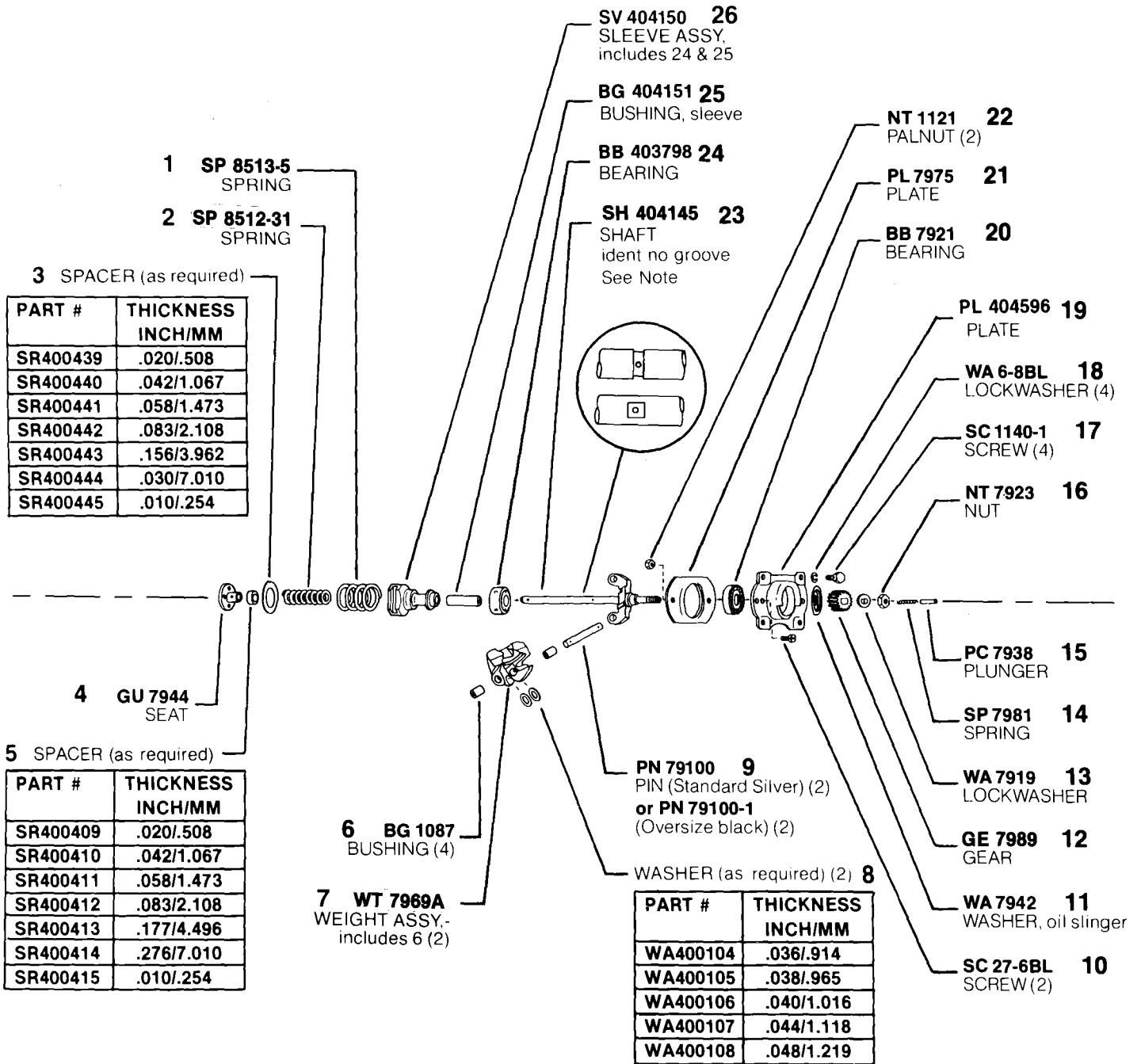
* Quantity used is one, unless otherwise indicated in parenthesis () following description of part.

MODEL APE 8VG 110A 6692A thru G

ASSY LE 79305-7A
LEVER ASSY,
 fulcrum-including 8, 10
 thru 12, 14, 15, 20 thru
 28



MODEL APE 8VG 110A 6692A thru G

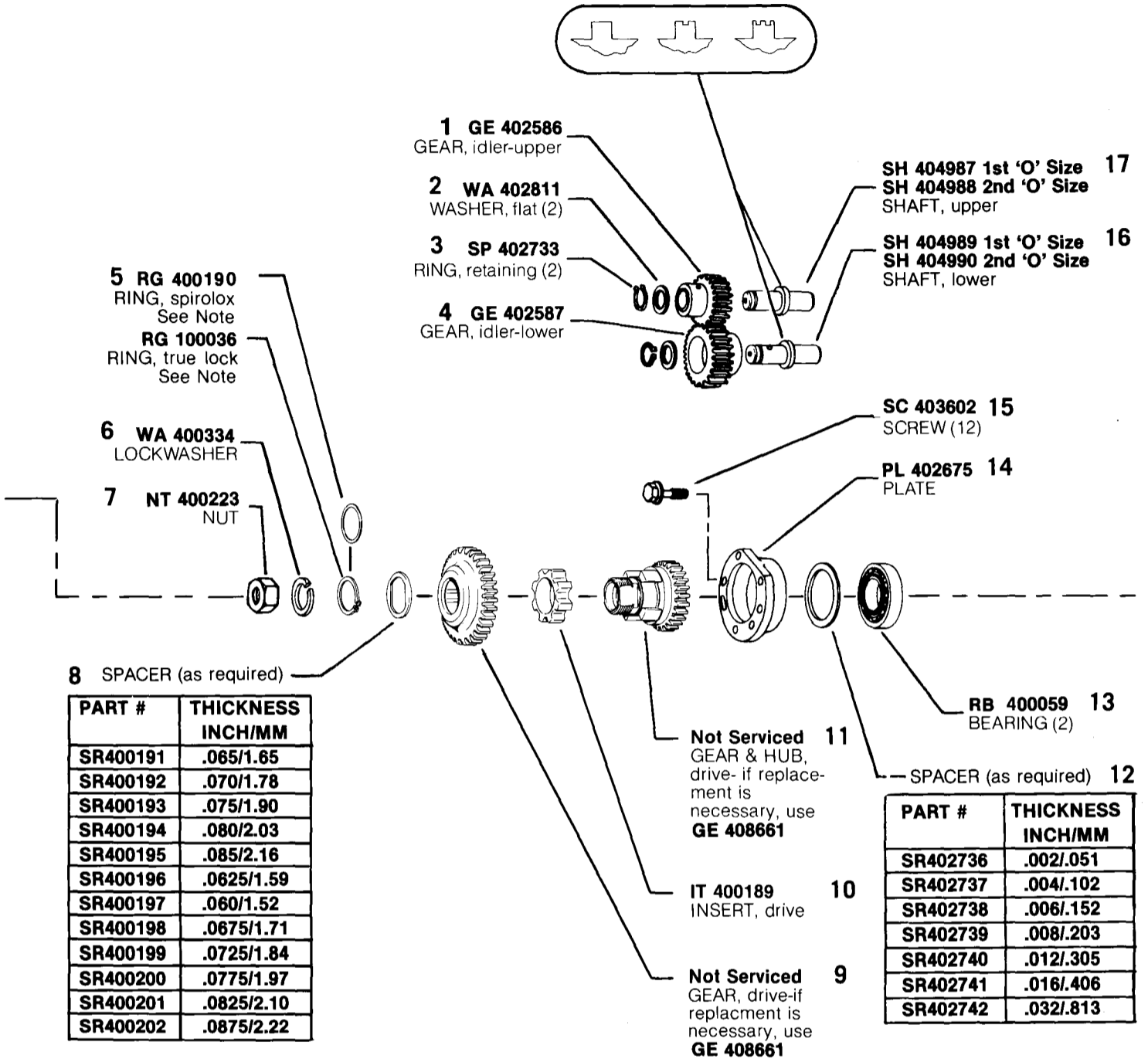


NOTE: When replacing shaft (#23 w/groove) with latest shaft (SH 404145 no groove) BG404151 (25) MUST be used. Shaft with groove used BG400118.

MODEL APE 8VG 110A 6692A thru G

ASSY GE 408661
(RUBBER DRIVE)
DRIVE ASSY-including
5, 8 thru 11
See Note

PRODUCTION - No Groove
1st 'O' SIZE - One Groove
2nd 'O' SIZE - Two Grooves



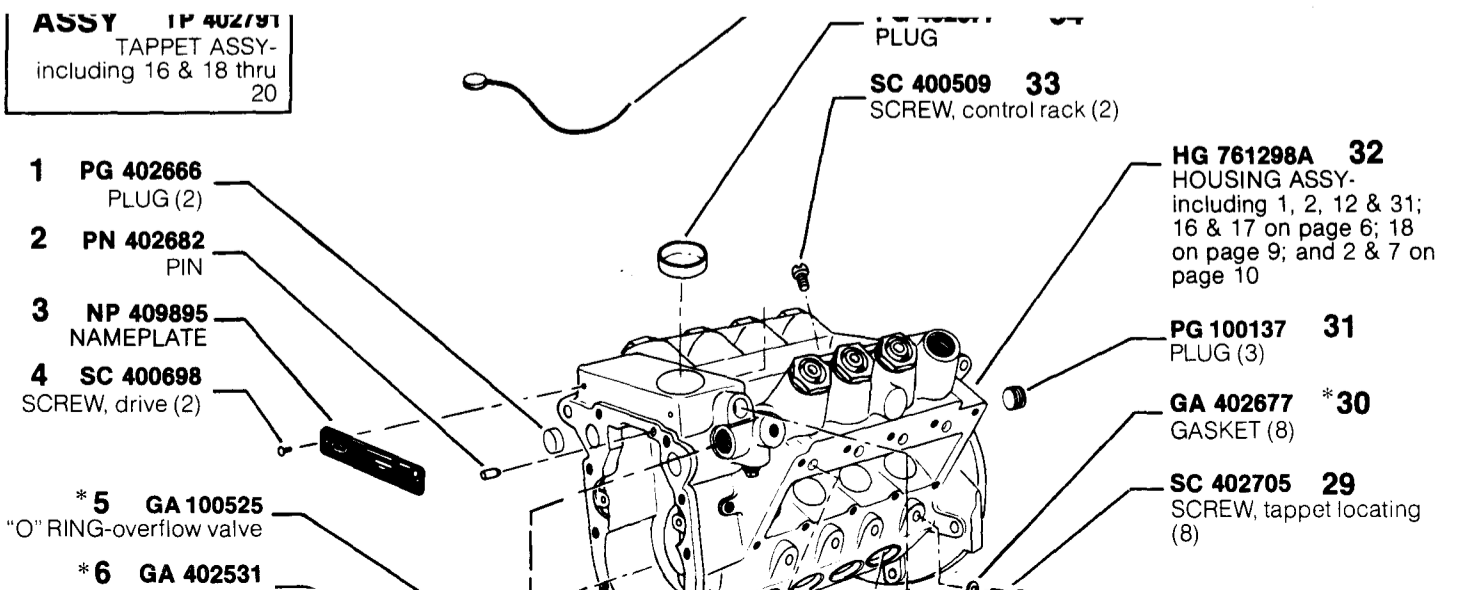
#5 NOTE: Earlier rubber drive assy GE 403795 used RG 400190 (Spirolox ring), later assy GE 408661 using RG 100036 (true lock ring). Spirolox & true lock rings are NOT interchangeable.

NOTE: Pumps equipped with GE 7991A "Friction Clutch" refer to Service Instructions Model 8VG Parts Bulletin P2 for Parts.

MODEL APE 8VG 110A 6692A thru G

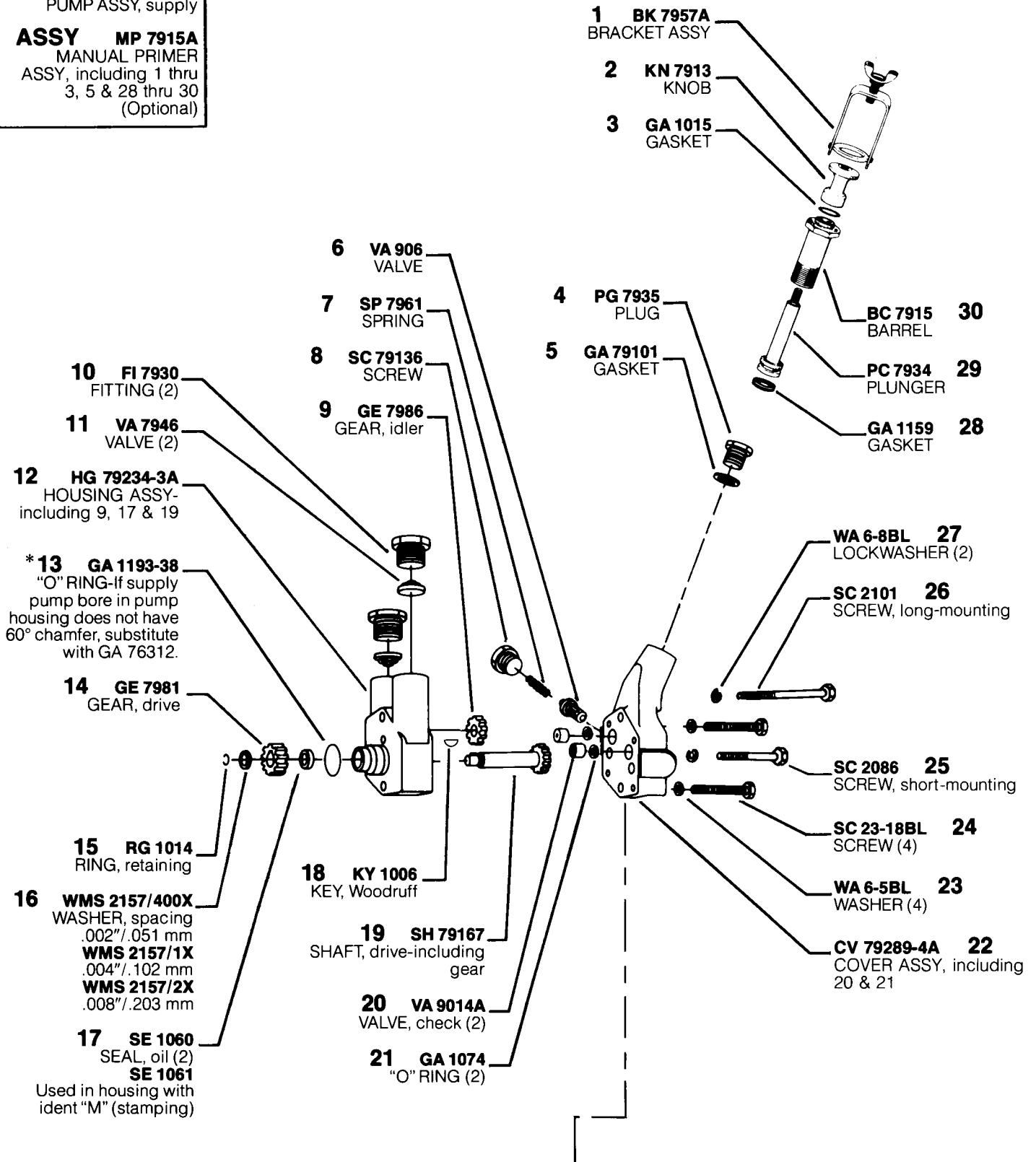
85123

ASSY 1P 402791
TAPPET ASSY-
including 16 & 18 thru
20



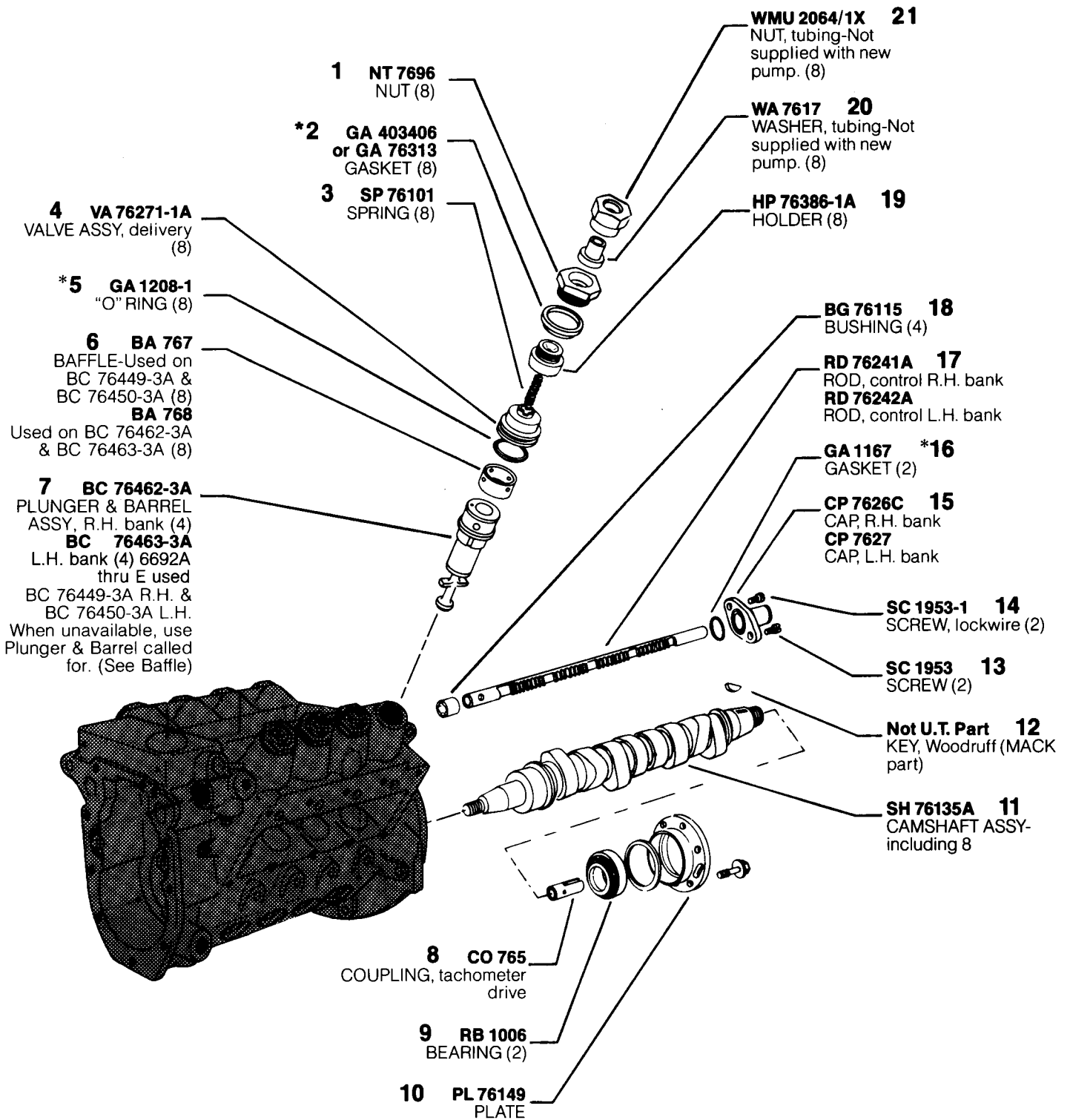
ASSY SGE 20A6635A
PUMP ASSY, supply

ASSY MP 7915A
MANUAL PRIMER
ASSY, including 1 thru
3, 5 & 28 thru 30
(Optional)



MODEL APE 8VG 110A 6692A thru G

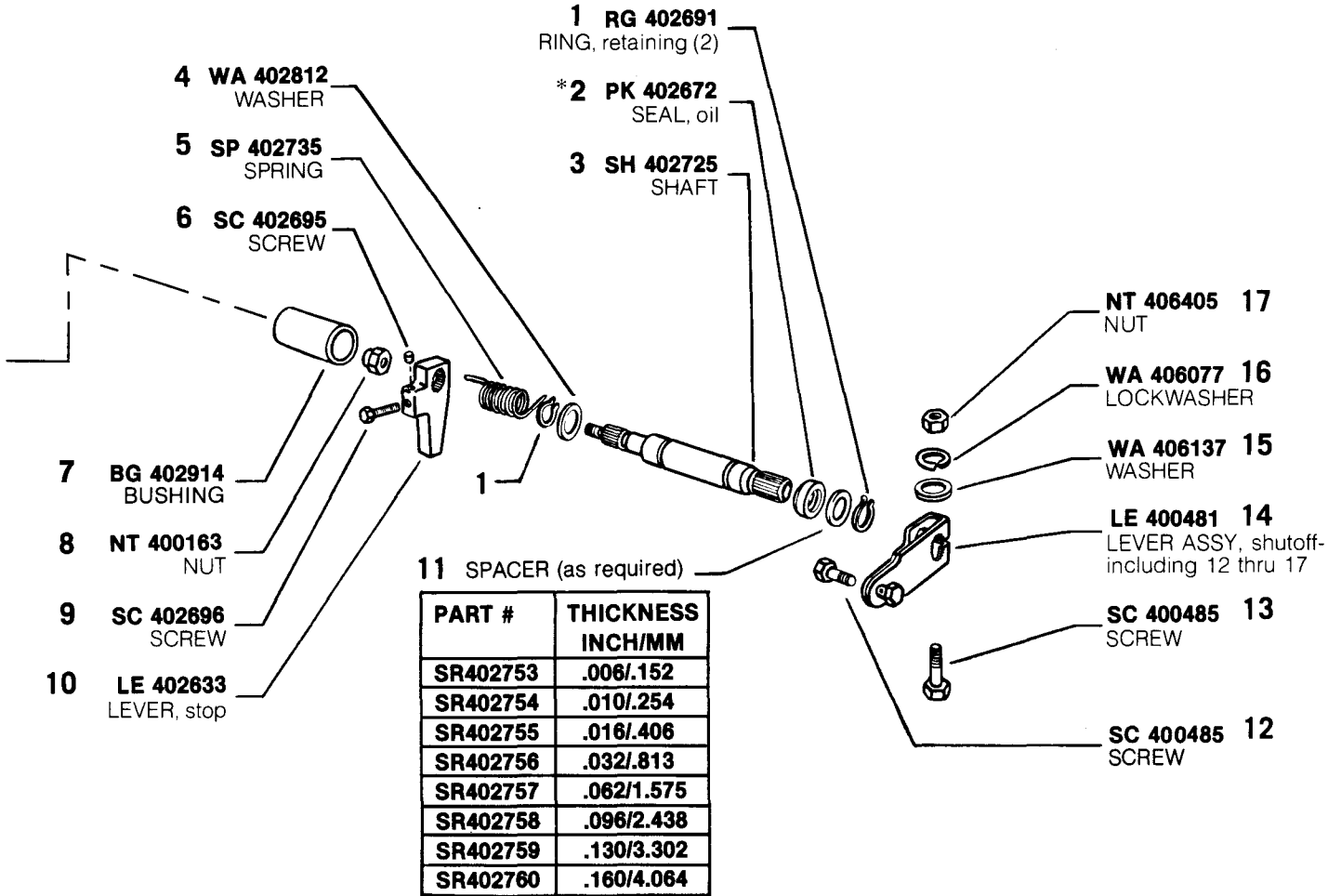
*Denotes parts included in Pump Repair Gasket Kit-KT 76480.



*Denotes parts included in Pump Repair Gasket Kit-KT 76480.

MODEL APE 8VG 110A 6692A thru G

ASSY LE 79298A
 LEVER ASSY, inner
 stop-including 6, 9 & 10



*Denotes parts included in Pump Repair Gasket Kit-KT 76480.

MODEL APE 8VG 110A 6692A thru G

