

**6736**

**E thru L**



**PUMP ROTATION:**  
Counterclockwise: Firing Order: 1-5-4-8-6-3-7-2  
**MOUNT:**  
Vee  
**TIMED FOR PORT CLOSING**  
**SPECIAL FEATURES:**  
2.75:1 Gear Ratio

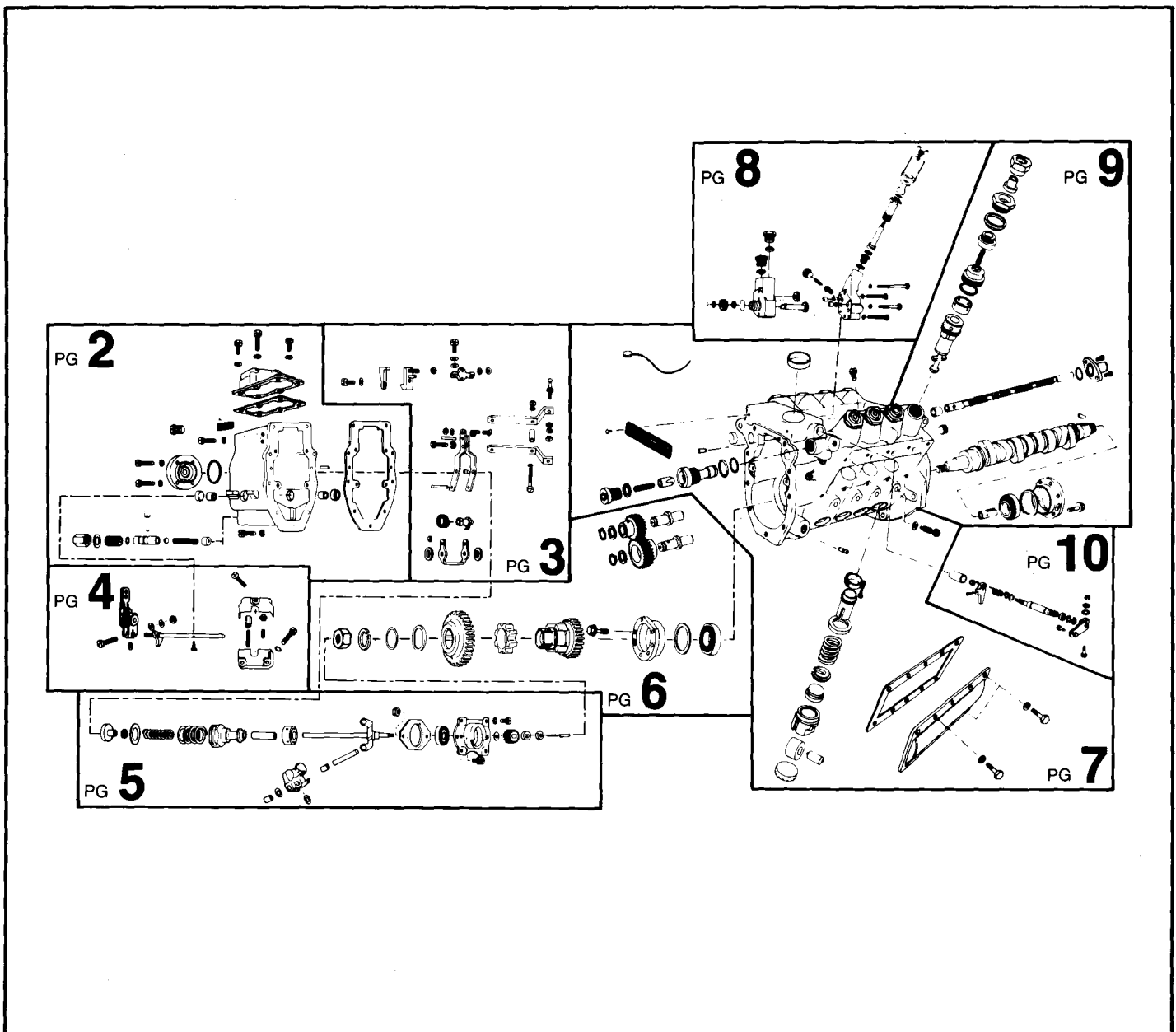
**MACK**  
**APE 8VG 110A 6736**

**Special Information:**

### SERVICE PARTS

Following are all parts, part numbers, pump codes and calibrations for the Model: APE 8VG 110A 6736. The exploded view drawing below is detailed with part numbers

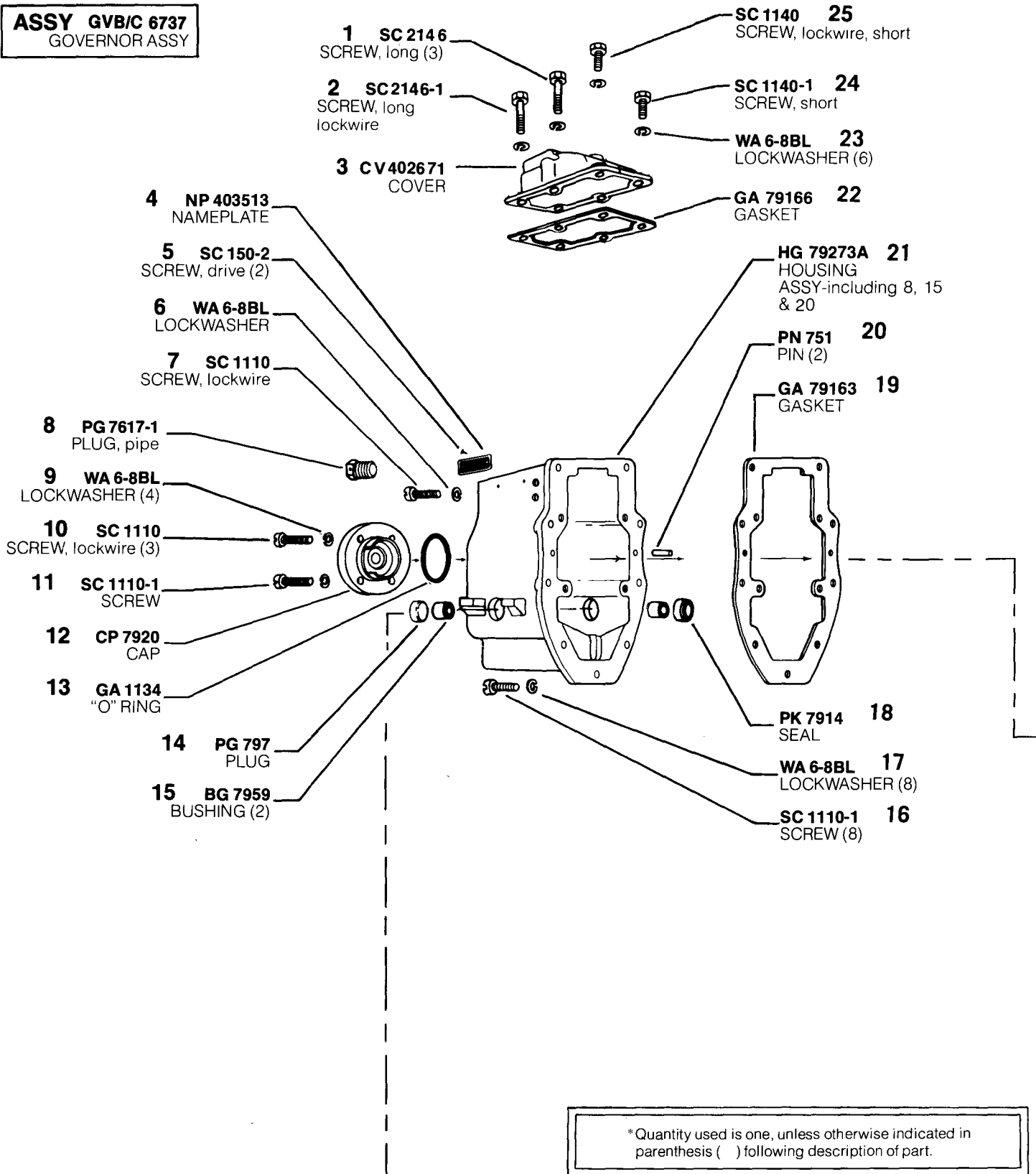
listed on the pages indicated. Refer to the Index Section for explanations of codes and abbreviations.



85121

# MODEL APE 8VG 110A 6736

**ASSY GVB/C 6737**  
GOVERNOR ASSY



\*Quantity used is one, unless otherwise indicated in parenthesis ( ) following description of part.

## MODEL APE 8VG 110A 6736

**ASSY LE 79305-7A or**  
**LEVER ASSY, fulcrum-**  
 including 8, 10 thru 12,  
 14, 15 & 20 thru 28  
**LE 79290-2A**  
 (does not include 22)

**3 PL 79382**  
 PLATE, adjustable  
 stop (ident #58)

**4 WA 21-5**  
 WASHER

**5 SC 1998**  
 SCREW

**1 NT 1276**  
 NUT (2)

**2 PL 79240-1A**  
 PLATE, stop  
 (ident #A1)

**6 WA 6-8BL**  
 LOCKWASHER

**7 NT 8-8BL**  
 NUT

**8 PN 79109**  
 PIN

**9 SC79153-1**  
 SCREW, droop

**10 LE 79306A**  
 LEVER, fulcrum-  
 including  
 12-6736E thru G  
 used LE 79296A  
 with LK 7951A.

**11 PN 400812**  
 PIN

**12 PN 7989**  
 PIN (2)

**13 SP 7949**  
 SPRING

**14 RG 1082**  
 RING (2)

**15 BK 7970**  
 BRACKET

**SC 1110-1 33**  
 SCREW (2)

**WA 6-8BL 32**  
 LOCKWASHER (2)

**WA 1143 31**  
 WASHER (2)

**BK 7958 30**  
 BRIDGE

**WA 22-10CA 29**  
 LOCKWASHER

**NT 1218 28**  
 NUT

**PN 79103 27**  
 LINK (2)

**LK 7954 26**  
 LINK (2)-6736E thru G  
 used LK 7951A  
 (aluminum) and  
 SC 2125 (20).  
 When necessary,  
 replace with link,  
 screw (20) and  
 spacer (22).

**WA 1143 25**  
 WASHER (2)

**WA 6-8BL 24**  
 LOCKWASHER (2)

**NT 8-8BL 23**  
 NUT (2)

**SR 7949 22**  
 SPACER

**WA 1770 21**  
 WASHER (2)

**SC 2125 20**  
 SCREW, used with  
 LK 7951A (aluminum)  
**SC 2151**  
 Used with  
 LK 7954 (steel)

**SC 1136 19**  
 SCREW

**CA 799 18**  
 CAM

**PL 79327A 17**  
 PLATE

**SR 799/1 16**  
 SPACER, bracket  
 (as required)  
 .020" thk/.508 mm

**SR 799/2**  
 .042" thk/1.067 mm

**SR 799/3**  
 .058" thk/1.473 mm

**SR 799/4**  
 .083" thk/2.108 mm

**SR 799/5**  
 .177" thk/4.496 mm

**SR 799/6**  
 .276" thk/7.010 mm

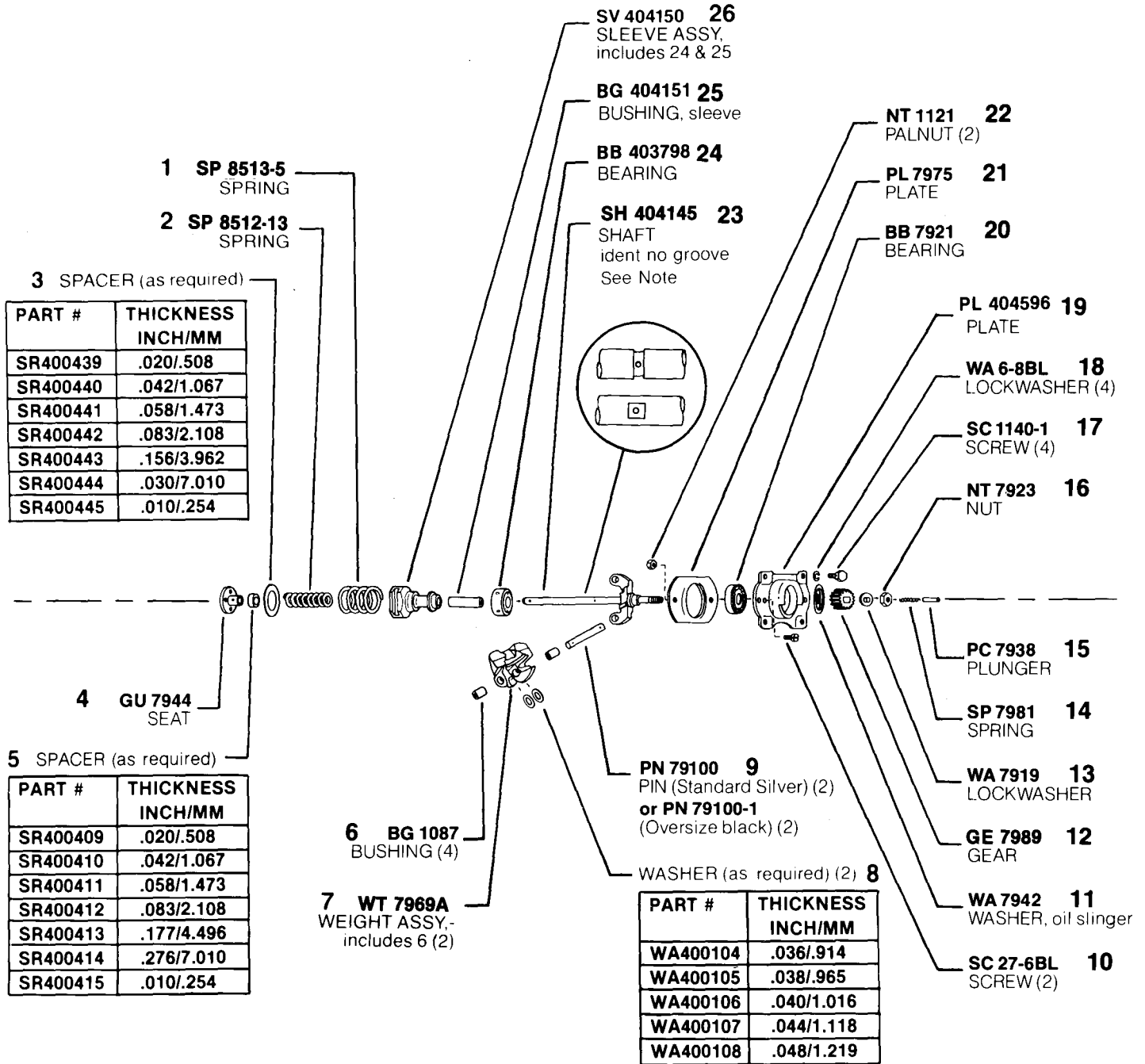
**SR 799/7**  
 .010" thk/.254 mm

MODEL APE 8VG 110A 6736

85121

MODEL APE 8VG 110A 6736

8591

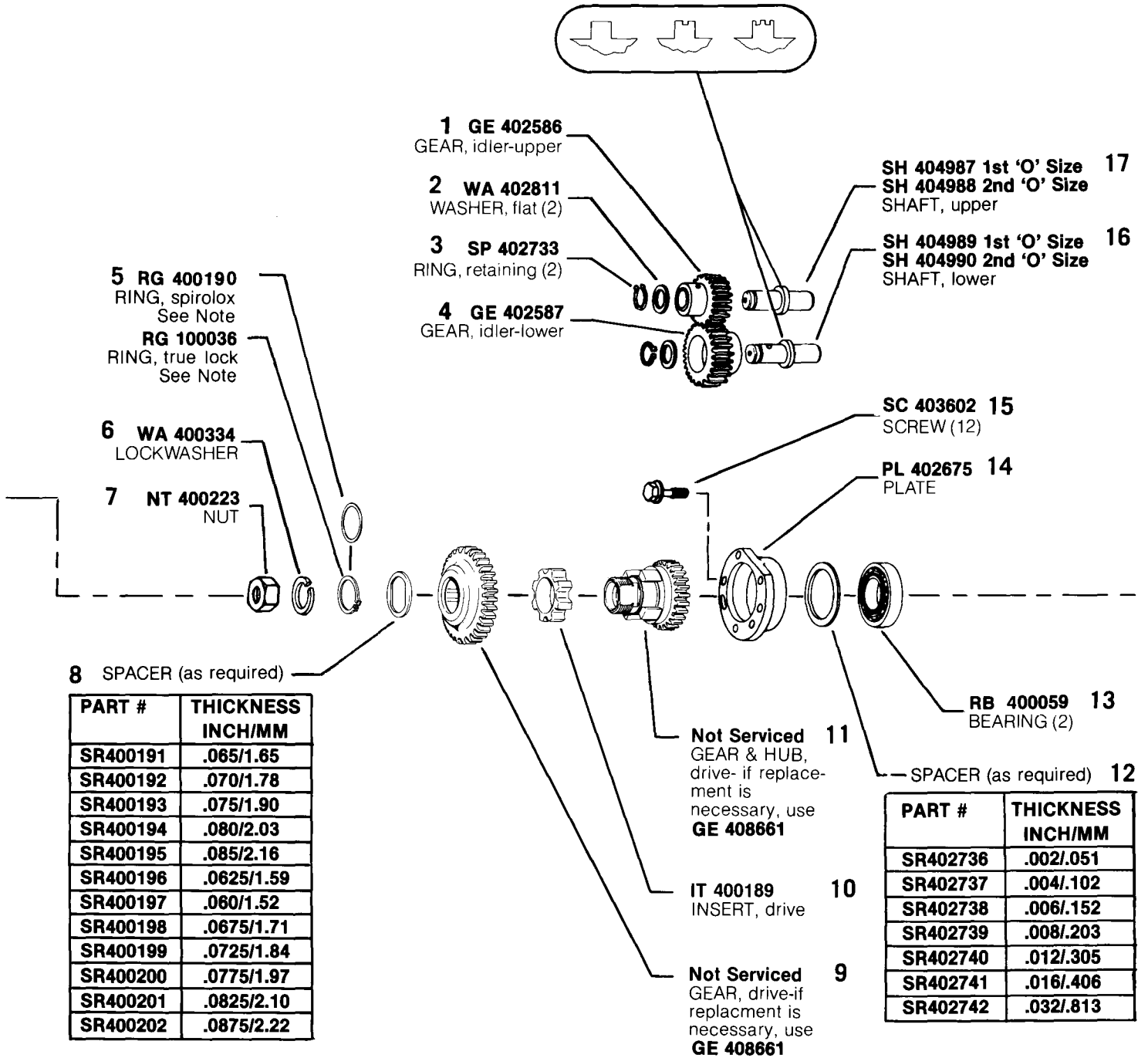


NOTE: When replacing shaft (#23 w/groove) with latest shaft (SH 404145 no groove) BG404151 (25) MUST be used. Shaft with groove used BG400118.

# MODEL APE 8VG 110A 6736

**ASSY GE 408661**  
 (RUBBER DRIVE)  
 DRIVE ASSY-including  
 5, 8 thru 11  
 See Note

PRODUCTION - No Groove  
 1st 'O' SIZE - One Groove  
 2nd 'O' SIZE - Two Grooves



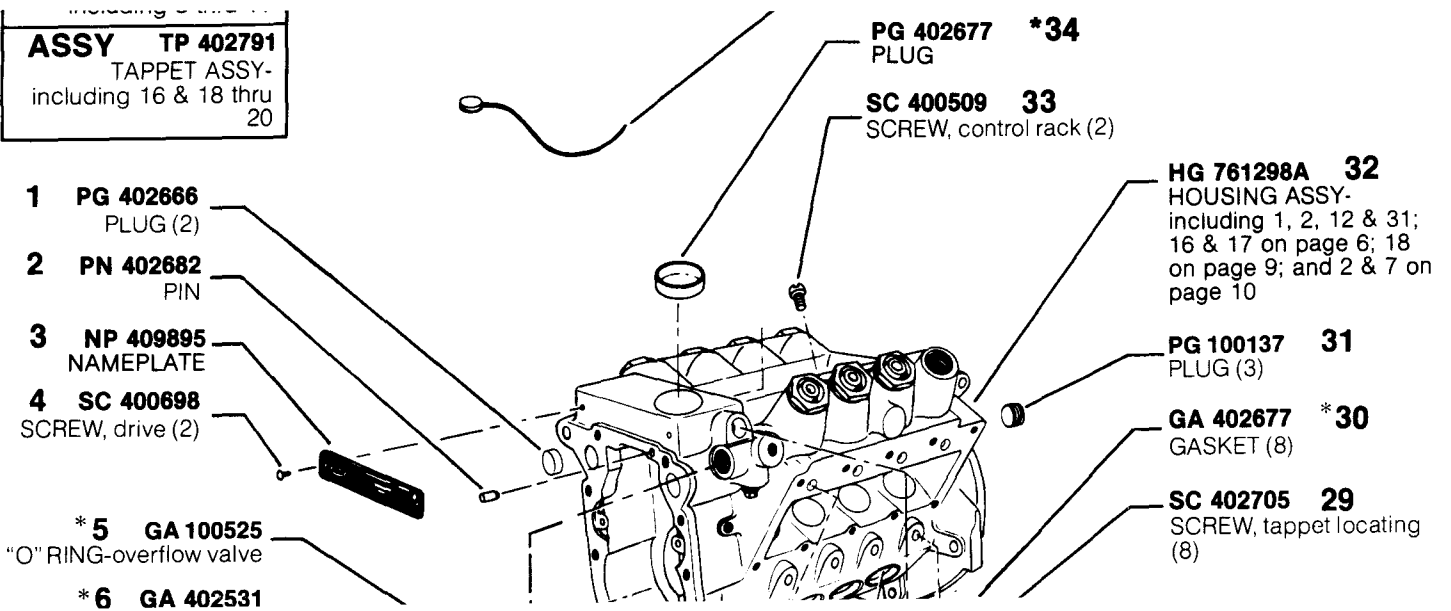
#5 NOTE: Earlier rubber drive assy GE 403795 used RG 400190 (Spirolox ring), later assy GE 408661 using RG 100036 (true lock ring). Spirolox & true lock rings are NOT interchangeable.

**ASSY** NOTE: Pumps equipped with GE 7991A "Friction Clutch" refer to Service Instructions Model 8VG Parts Bulletin P2 for Parts.

## MODEL APE 8VG 110A 6736

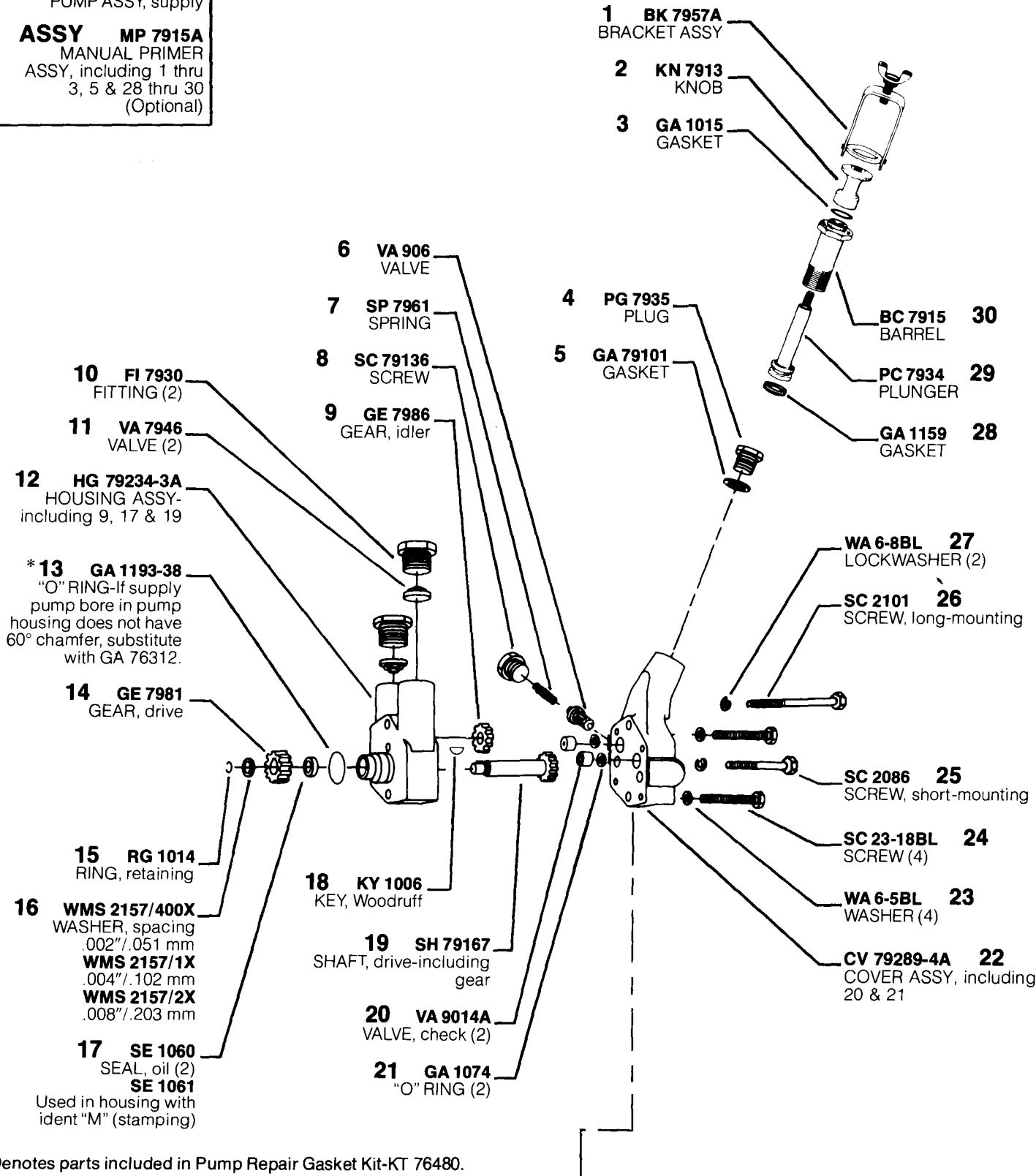
85123

**ASSY TP 402791**  
 TAPPET ASSY-  
 including 16 & 18 thru  
 20



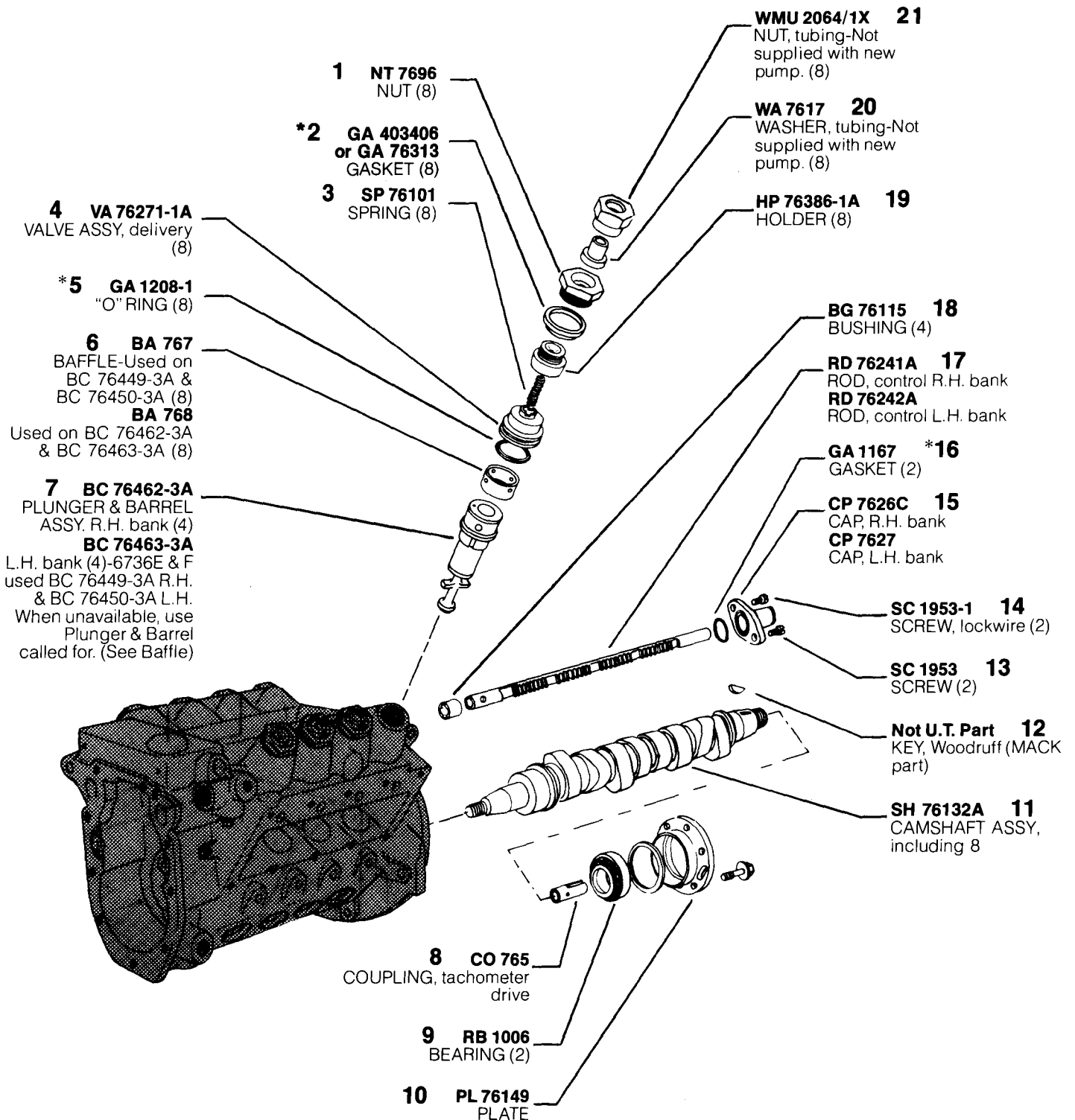
**ASSY SGE 20A6635A**  
PUMP ASSY, supply

**ASSY MP 7915A**  
MANUAL PRIMER  
ASSY, including 1 thru  
3, 5 & 28 thru 30  
(Optional)



\*Denotes parts included in Pump Repair Gasket Kit-KT 76480.

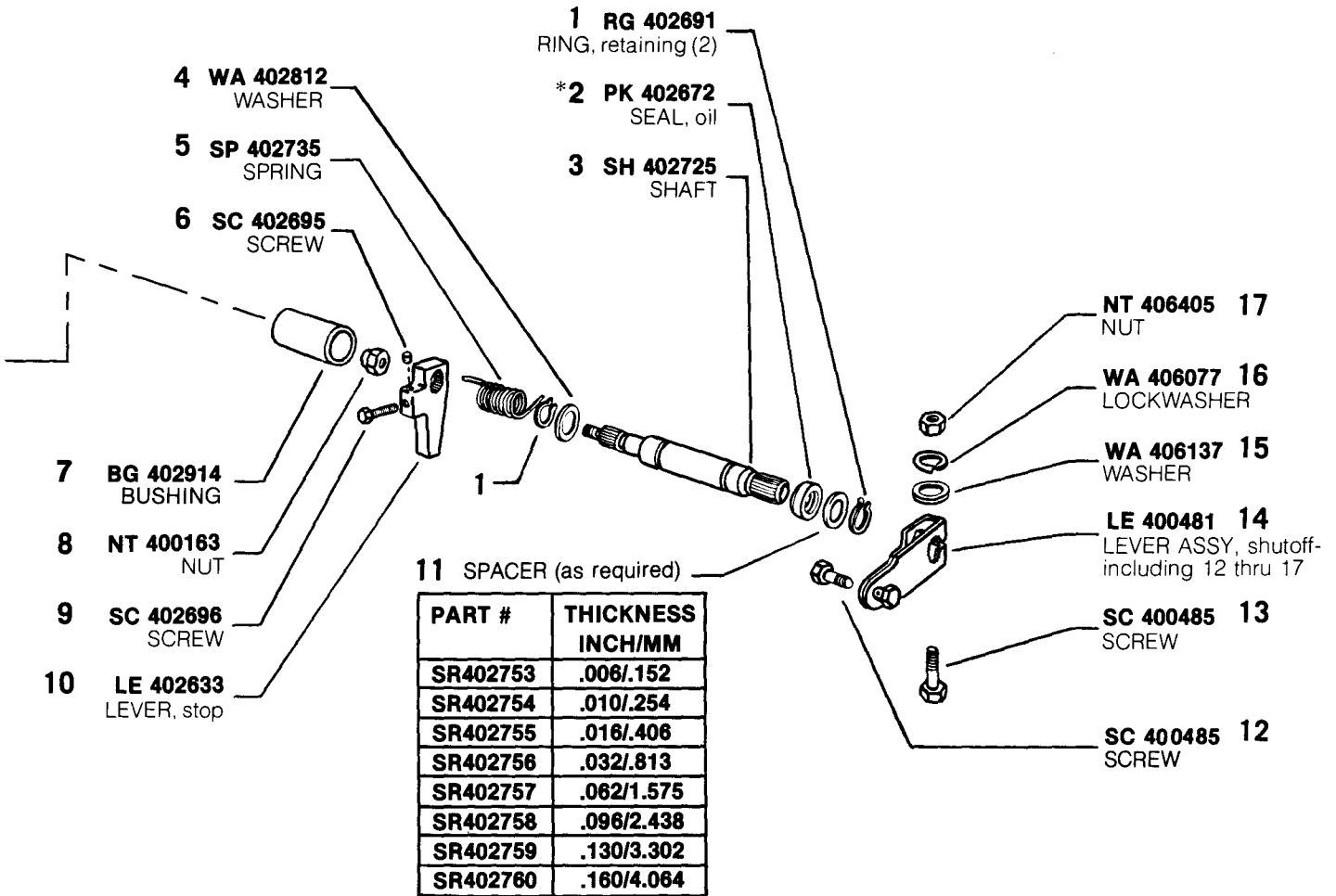
# MODEL APE 8VG 110A 6736



\*Denotes parts included in Pump Repair Gasket Kit-KT 76480.

## MODEL APE 8VG 110A 6736

**ASSY LE 79298A**  
 LEVER ASSY, inner  
 stop-including 6, 9 & 10



\*Denotes parts included in Pump Repair Gasket Kit-KT 76480.

## MODEL APE 8VG 110A 6736



6736E21 thru L21

**CODE DATA**

Engine Model ..... ETAX 1000, ETAZ 1000  
 Engine Static Timing ..... 17°  
 Customer No. .... 313 GC 5133-P30  
 Kit No. .... KT 76466-7  
 Customer Kit No. .... 313 GC 5133-P29  
 Governor Speeds ..... 300/850  
 Cam Nose Angle ..... 92°-96°

Governor Outer Spring  
 Precompression ..... Flush to 0.5mm(.020")  
 Governor Inner  
 Spring Gap ..... 3.75-4.00mm(.148"- .158")  
 Lift to Port Closing ..... 3.00-3.20mm  
 (.118"- .126"), cam lift with L.H. bank control rack at  
 0.340" (full load position) extension

STEP	A	B	C	D
	Full Load at 0.340" Rack Ext	Cam Departure	Peak Torque (from actual A delivery)	Droop Screw (from actual A delivery)
RPM	<b>900</b>	<b>980-990</b>	<b>700</b>	<b>615</b>
DEL cc/500 str	<b>90.0-95.5</b>	<b>NONE</b>	<b>+ 16.5 ± 2.5</b>	<b>+ 25.0 ± 3.5</b>
DEL cc/300 str	<b>54.0-57.5</b>	<b>NONE</b>	<b>+ 10.0 ± 2.0</b>	<b>+ 15.0 ± 2.0</b>

STEP	E	F	G	H
	"PLE"	Low Idle	Minimum Delivery	Reset Cam Departure
RPM	<b>800</b>	<b>325</b>	<b>75</b>	<b>885-895</b>
DEL cc/500 str	<b>56.0-60.0</b>	<b>14.0-22.0</b>	—	<b>NONE</b>
DEL cc/300 str	<b>33.5-36.0</b>	<b>8.5-13.5</b>	—	<b>NONE</b>
DEL cc/100 str	—	—	<b>12.0</b>	<b>NONE</b>

SERVICE CHECK — B, A, C, D & H are applicable