

**6802**

**A & AZ**

**PUMP ROTATION:**  
Clockwise: Firing Order: 1-5-3-6-2-4  
**DRIVE END:**  
R. H. Side  
**TIMED FOR PORT CLOSING**  
**SPECIAL FEATURES:**  
Low Regulation

**MACK**  
**APE 6G 110A 6802A & AZ**

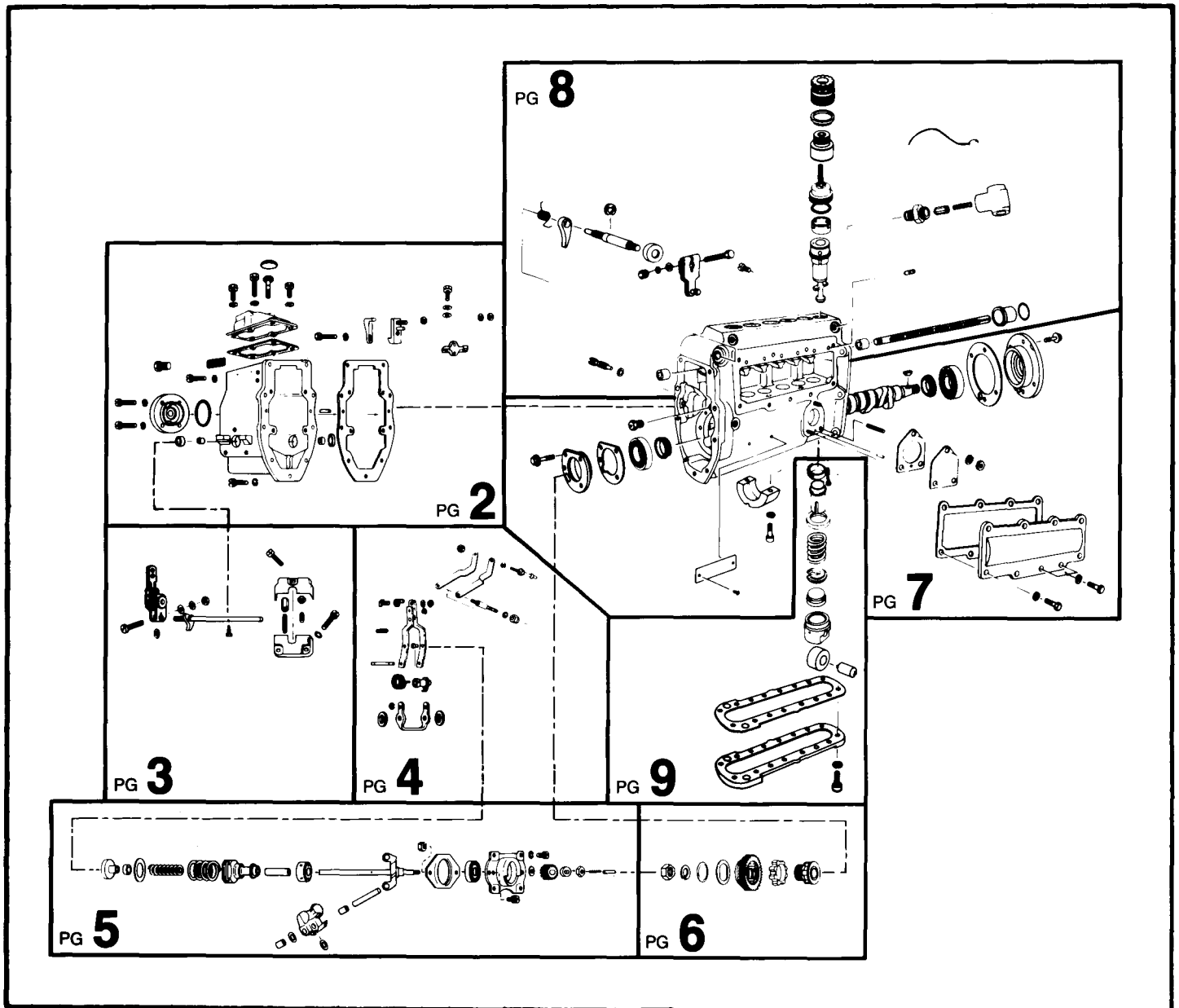
**Special Information:**  
Parts Bulletin APE 6BB-P4



### SERVICE PARTS

Following are all parts, part numbers, pump codes and calibrations for the *Model: APE 6G 110A 6802A & AZ*. The exploded view drawing below is detailed with part numbers

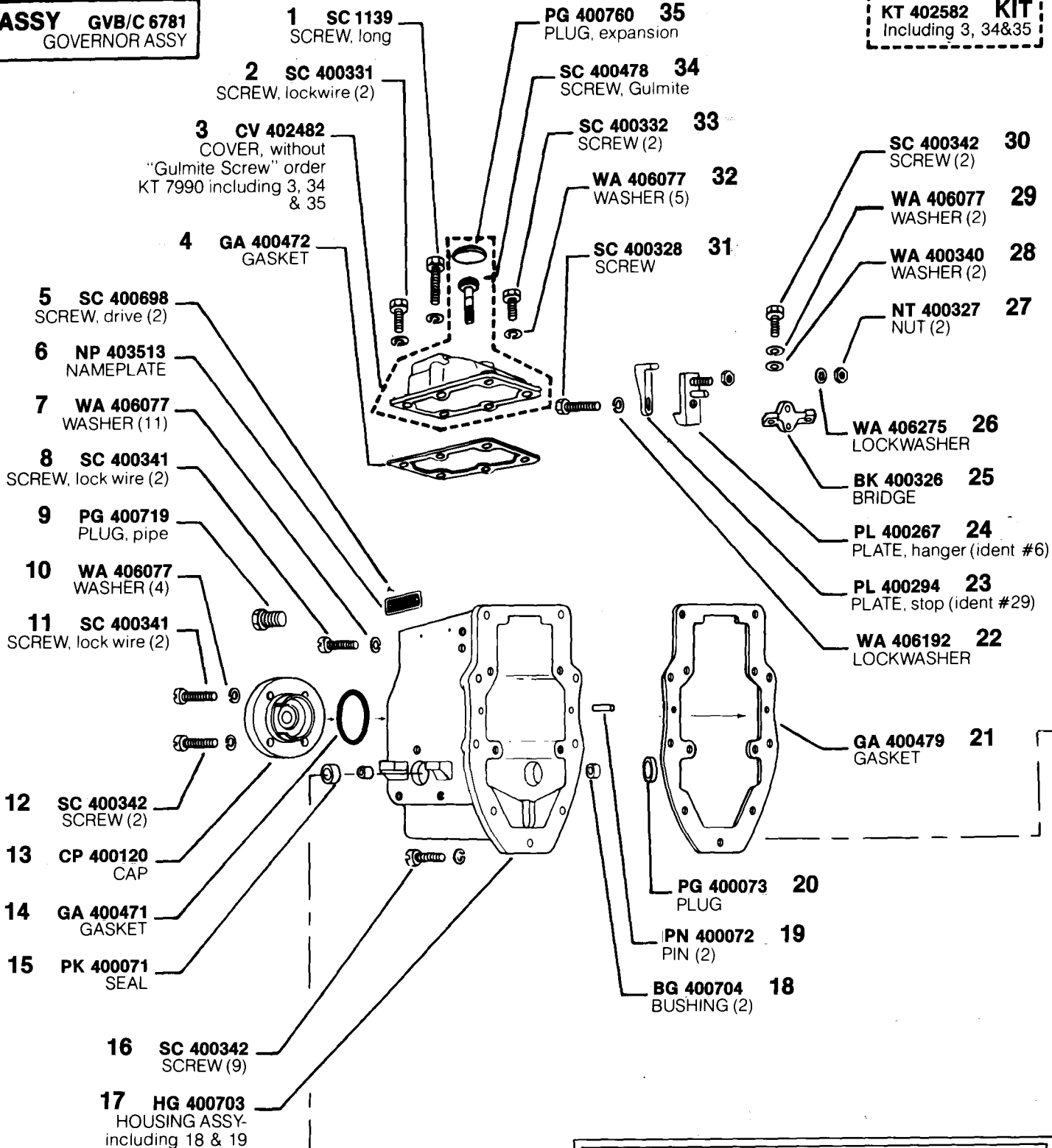
listed on the pages indicated. Refer to the Index Section for explanations of codes and abbreviations.



# MODEL APE 6G 110A 6802A & AZ

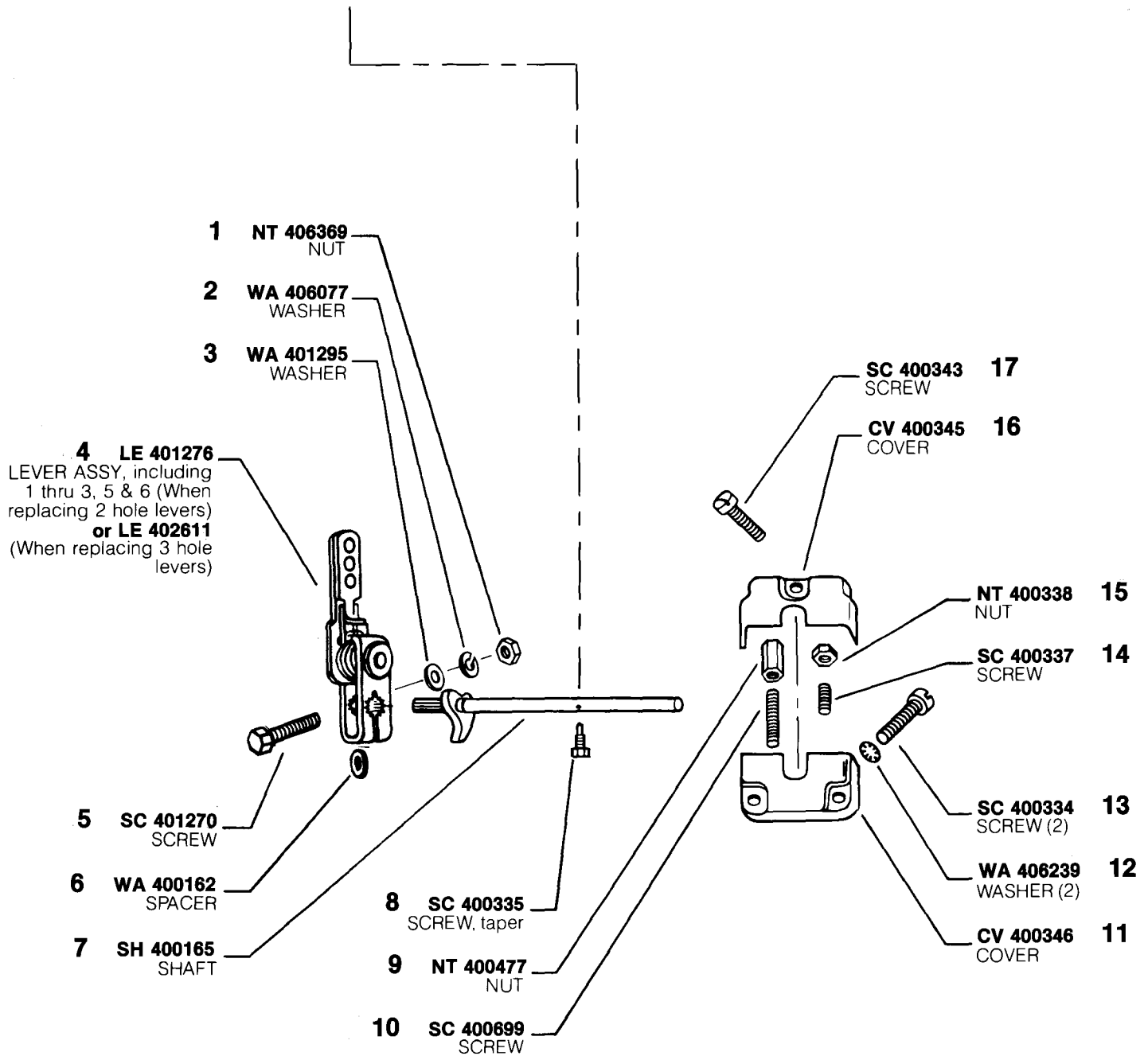
**ASSY GVB/C 6781**  
GOVERNOR ASSY

**KT 402582 KIT**  
Including 3, 34&35



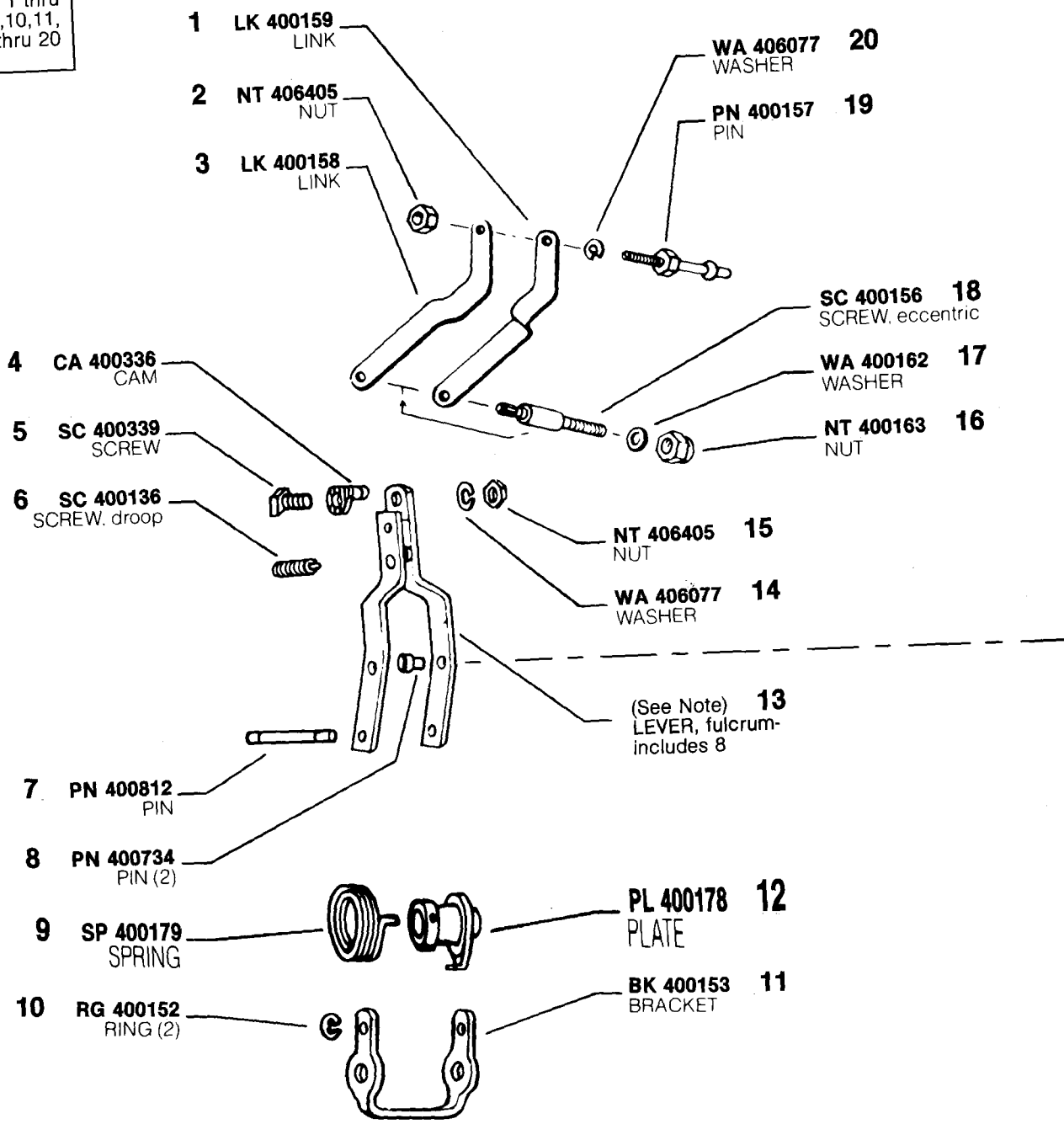
\*Quantity used is one, unless otherwise indicated in parenthesis ( ) following description of part.

## MODEL APE 6G 110A 6802A & AZ



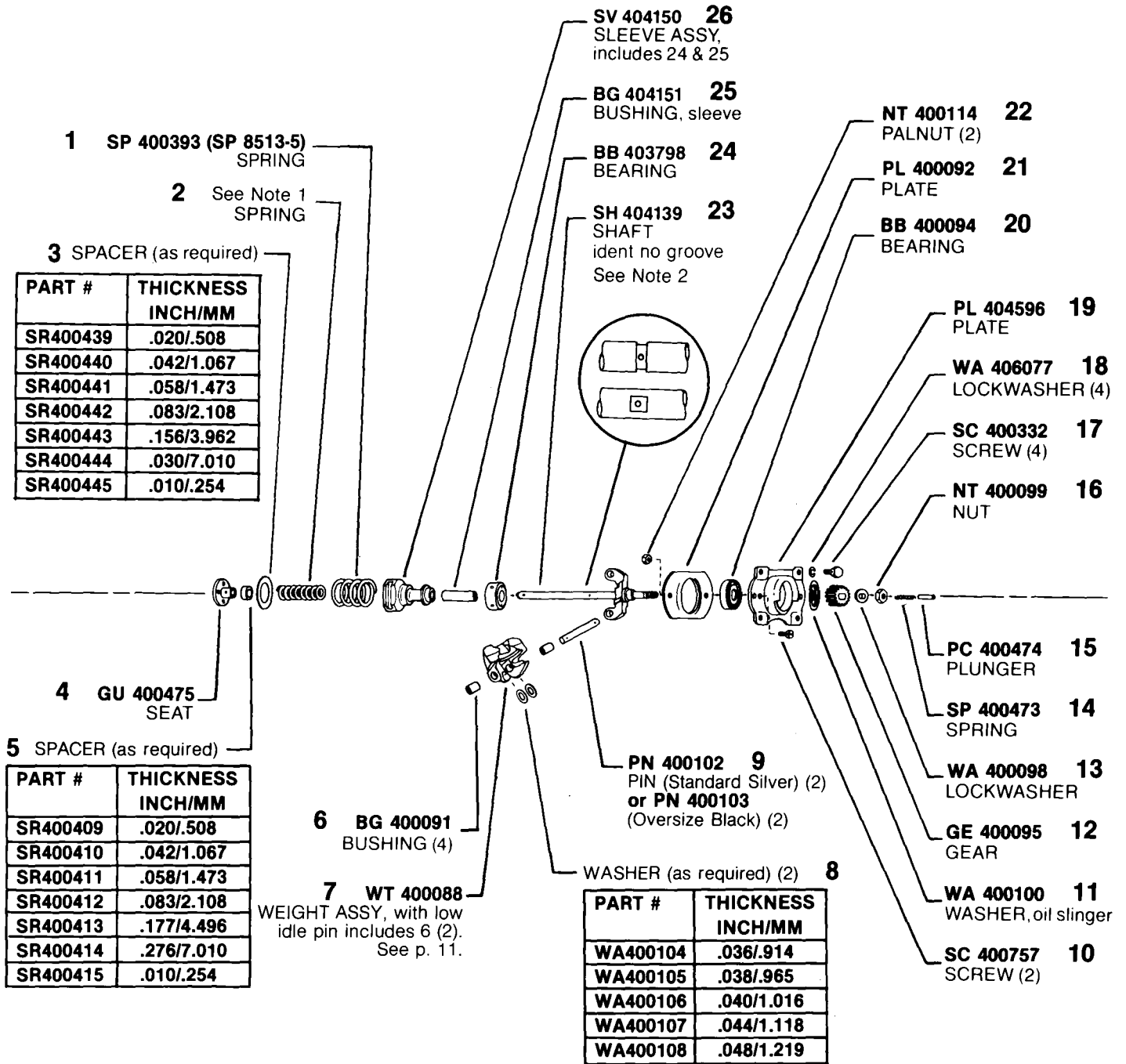
**MODEL APE 6G 110A 6802A & AZ**

**ASSY** (See Note)  
fulcrum-including 1 thru  
3,7,8,10,11,  
13, 16 thru 20



NOTE: Initially, LE 79300-5A (included item #13, LE 79301A) was used with GVB/C 6781. The lever is identified by a "301" stamping. When replacement of the fulcrum becomes necessary, use LE 400782 (includes item #13, LE 400800). IMPORTANT — Governor inner spring varies depending upon fulcrum being used. Refer to section 5 of this specification for part number information.

# MODEL APE 6G 110A 6802A & AZ

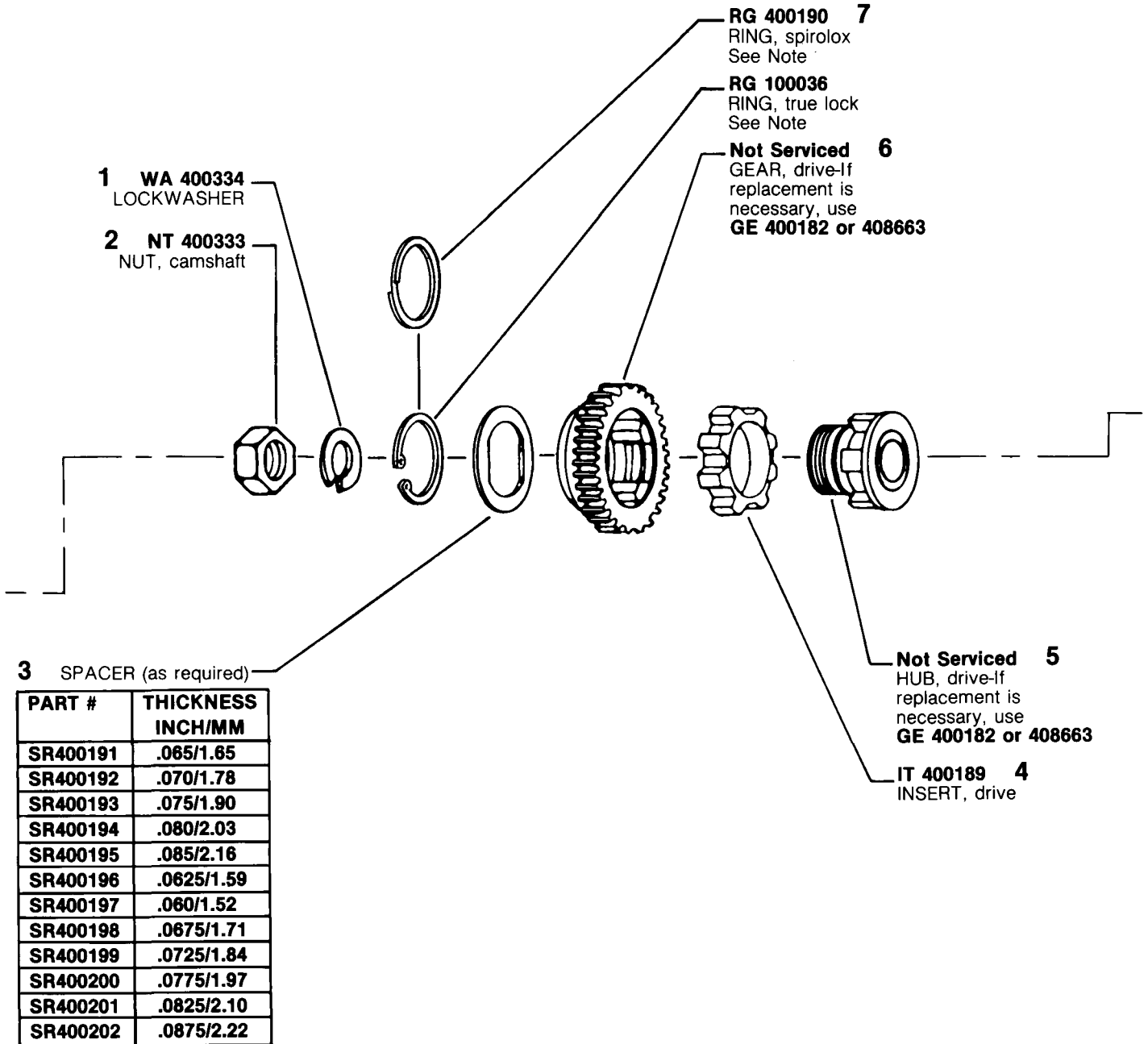


Note 1: Governor inner spring (#2) is dependent upon fulcrum lever; use SP 400352 (SP 8512-4) with LE79301A (ident stamping - 301) and SP 400379 (SP 8512-31) with LE400800 (no ident.)

Note 2: When replacing shaft (#23 w/groove) with latest shaft (SH404139 no groove) BG404151 (25) MUST be used. Shaft with groove used BG400118.

# MODEL APE 6G 110A 6802A & AZ

**ASSY GE 400182  
or 408633  
(RUBBER DRIVE)**  
DRIVE ASSY, includes 3 thru 7



#7 NOTE: Earlier rubber drive assy GE 400182 used RG 400190 (Spirolox ring), later assy GE 408663 using RG 100036 (true lock ring). Spirolox & true lock rings are NOT interchangeable.

## MODEL APE 6G 110A 6802A & AZ

Table 1

Item #2	#5	#7 & Identification	#23 & Identification
SH 76140	SR 7656	PL 76158 Slot for Lube Oil Drain	PL 76153 None
SH 408578	Omit	PL 76158 Slot for Lube Oil Drain	PL 76153 None
SH 404784	Omit	PL 400044 Scallop for Lube Oil Drain	PL 400028 Black Oxided or ID Groove on Front Face

**3** HG 761281A  
HOUSING ASSY-  
including 4,17,22  
and 18 & 22 on page 8

**HG 761277A**  
Earlier pumps with tappet  
locating pins. When  
replacement is necessary,  
use HG 76281A.

**4** PG 400007  
PLUG, lube feed

**5** See Table 1  
SPACER (2)

**6** RB 400059  
BEARING (2)

**7** See Table  
PLATE

**8** SC 403602  
SCREW (8)

**1** KY 403378  
KEY, WOODRUFF

**2** (See Table)  
CAMSHAFT

See Table

SHIM (as required) **24**

PART #	THICKNESS INCH/MM
SR400047	.004/0.102
SR400048	.006/0.152
SR400049	.008/0.203
SR400050	.012/0.304
SR400051	.016/0.406
SR400052	.032/0.812
SR400053	.048/1.206
SR400054	.062/1.587
SR400055	.078/1.981

See Table  
PLATE **23**

See #7

**SD 400005** **22**  
STUD, supply pump  
mounting (3)

**GA 400554** **\*21**  
GASKET

**NT 400555** **20**  
NUT (3)

**WA 406077** **19**  
LOCKWASHER(3)

**CV 401336** **18**  
COVER

**PN 400008** **17**  
PIN, roll

SHIM (as required)

PART #	THICKNESS INCH/MM
SR400031	.004/0.102
SR400032	.006/0.152
SR400033	.008/0.203
SR400034	.012/0.305
SR400035	.016/0.406
SR400036	.032/0.813
SR400037	.048/1.206
SR400038	.062/1.587
SR400039	.078/1.981

**10** NP 409895  
NAMEPLATE

**11** SC 400698  
SCREW, drive (2)

**SC 400060** **16**  
SCREW, wire seal (2)

**SC 400061** **15**  
SCREW (7)

**\*12** GA 400771  
GASKET

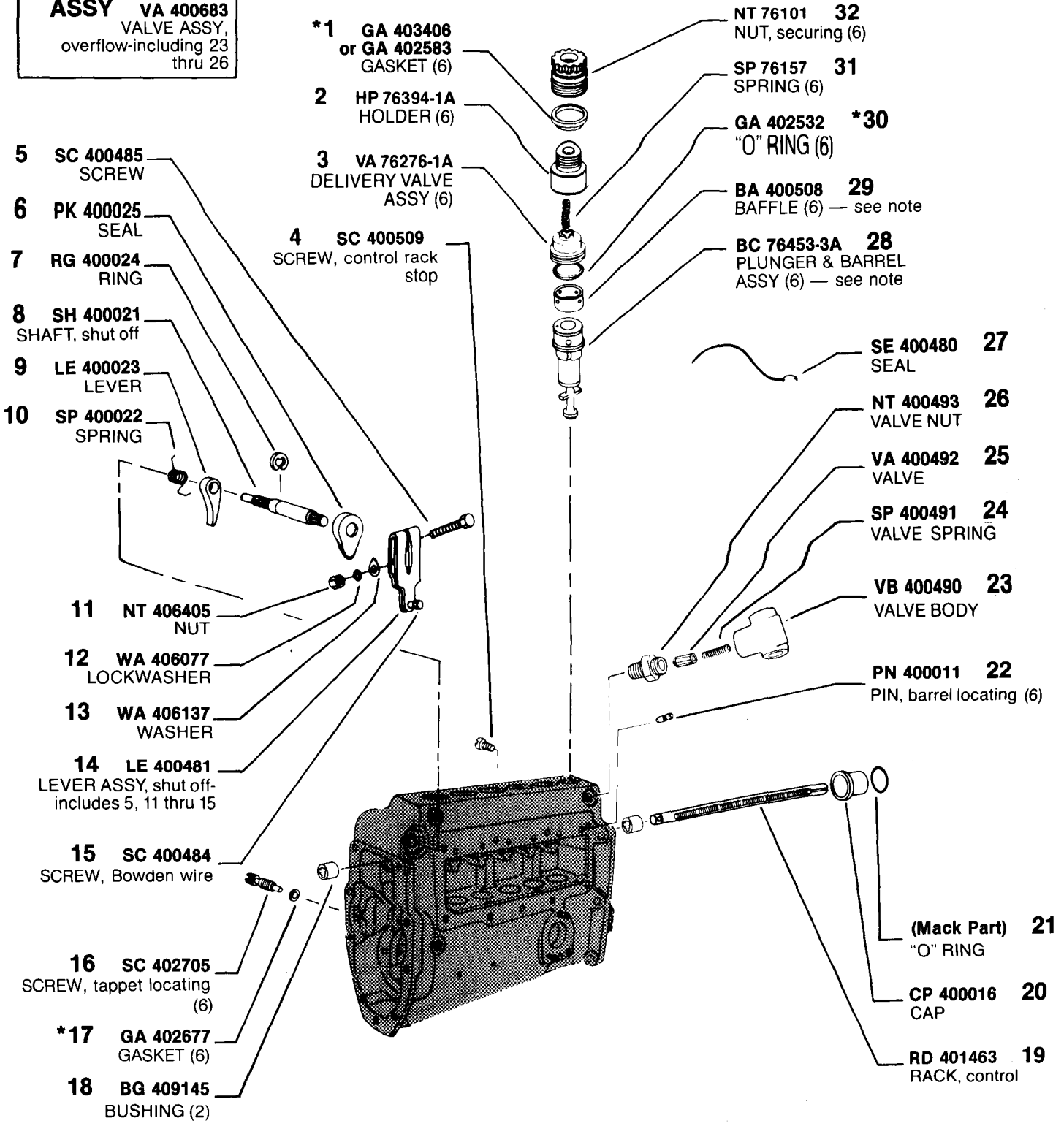
**13** CV 400767  
COVER

**14** WA 406078  
LOCKWASHER (9)

\*Denotes parts in Pump Gasket Repair Kit, KT76484.

# MODEL APE 6G 110A 6802A & AZ

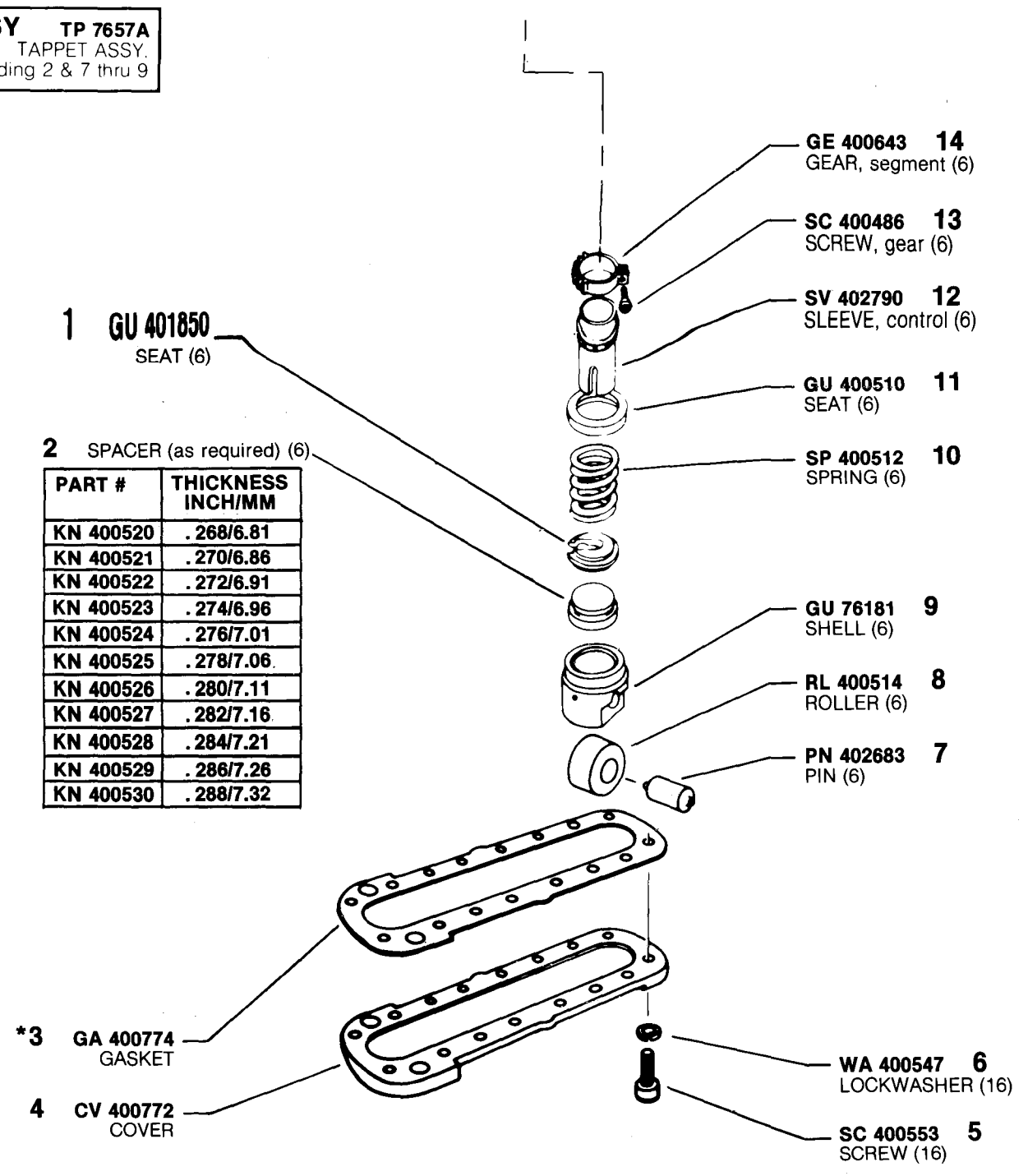
**ASSY VA 400683**  
VALVE ASSY,  
overflow-including 23  
thru 26



Note: BC 76453-3A (#28) can be replaced by BC 76464-3A with BA 400508 (#29). BA 767 (#29) was used on initial pumps and cannot be used with BC 76464-3A.

# MODEL APE 6G 110A 6802A & AZ

**ASSY TP 7657A**  
**TAPPET ASSY.**  
 including 2 & 7 thru 9



PART #	THICKNESS INCH/MM
KN 400520	.268/6.81
KN 400521	.270/6.86
KN 400522	.272/6.91
KN 400523	.274/6.96
KN 400524	.276/7.01
KN 400525	.278/7.06
KN 400526	.280/7.11
KN 400527	.282/7.16
KN 400528	.284/7.21
KN 400529	.286/7.26
KN 400530	.288/7.32

\*Denotes parts in Pump Gasket Repair Kit, KT 76484.

## MODEL APE 6G 110A 6802A & AZ



MACK  
**MODEL 6G**  
**SERVICE BULLETIN S15**

Reference 18-FI-86  
Issued June 1986  
Service Bulletin  
Model 300 #S2  
Service Bulletin  
Model 6BBT #S15

**GOVERNOR WEIGHT CONVERSION  
FROM DUAL FINGER (PINNED)  
WEIGHTS TO NON-PINNED WEIGHTS.**

Governors originally equipped with WT7965A or WT400089 (WT7969A) may be replaced by WT403453 by using the spring combinations listed below.

<u>Full Load RPM</u>		<u>Inner Spring</u>	<u>Outer Spring</u>
1000-1050	use	SP400383	SP400404
900-975	use	SP400350	SP400404
850	use	SP400359	SP400404

Governor spring gaps and preload should be set as specified under specific pump data found in the micro-fiche.

The letter "A" that identified WT403453 from WT7970A has been eliminated because a new mold is being used that assures sufficient clearance.

The use of WT7970A is acceptable but should be checked for bearing clearance as described in bulletins M300, #S2 and 6BBT, #S15.

---

**MODEL APE 6G 110A 6802A & AZ**