

7558

A



PUMP ROTATION:
Counterclockwise: Firing Order: 1-5-4-8-6-3-7-2
MOUNT:
Vee
TIMED FOR PORT CLOSING
SPECIAL FEATURES:
2.75:1 Gear Ratio

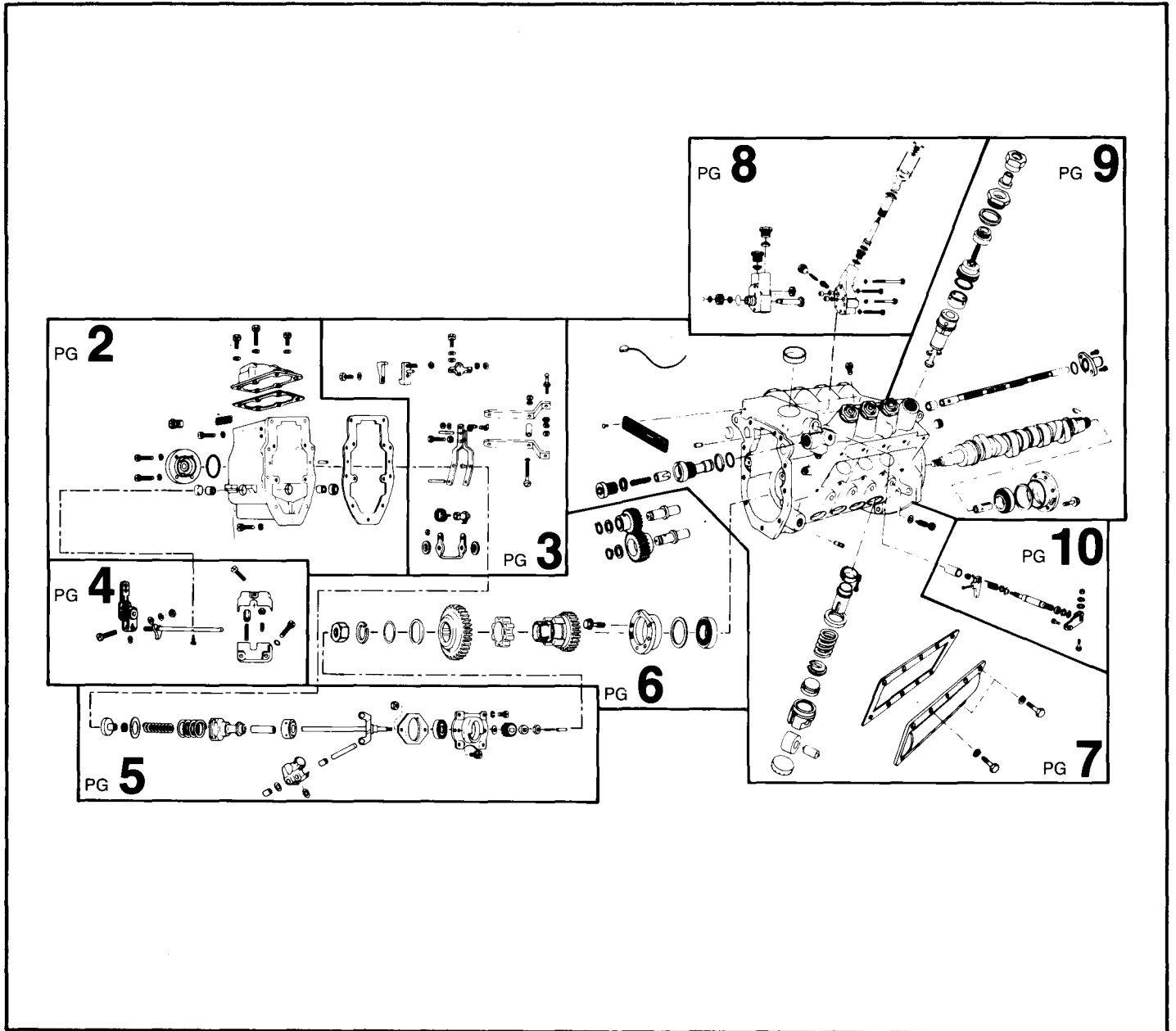
MACK
APE 8VG 110A 7558

Special Information:

SERVICE PARTS

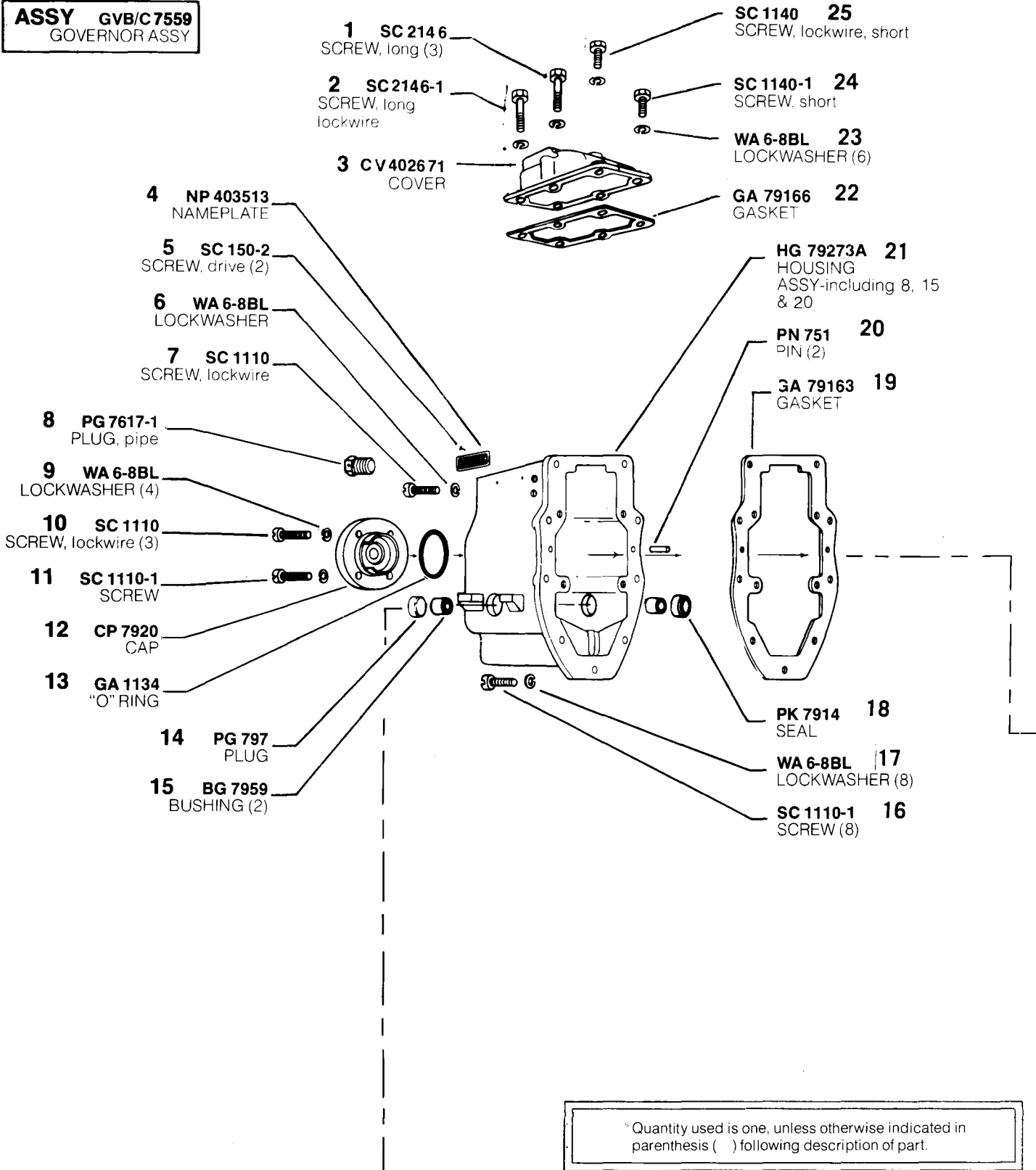
Following are all parts, part numbers, pump codes and calibrations for the *Model: APE 8VG 110A 7558*. The exploded view drawing below is detailed with part numbers

listed on the pages indicated. Refer to the Index Section for explanations of codes and abbreviations.



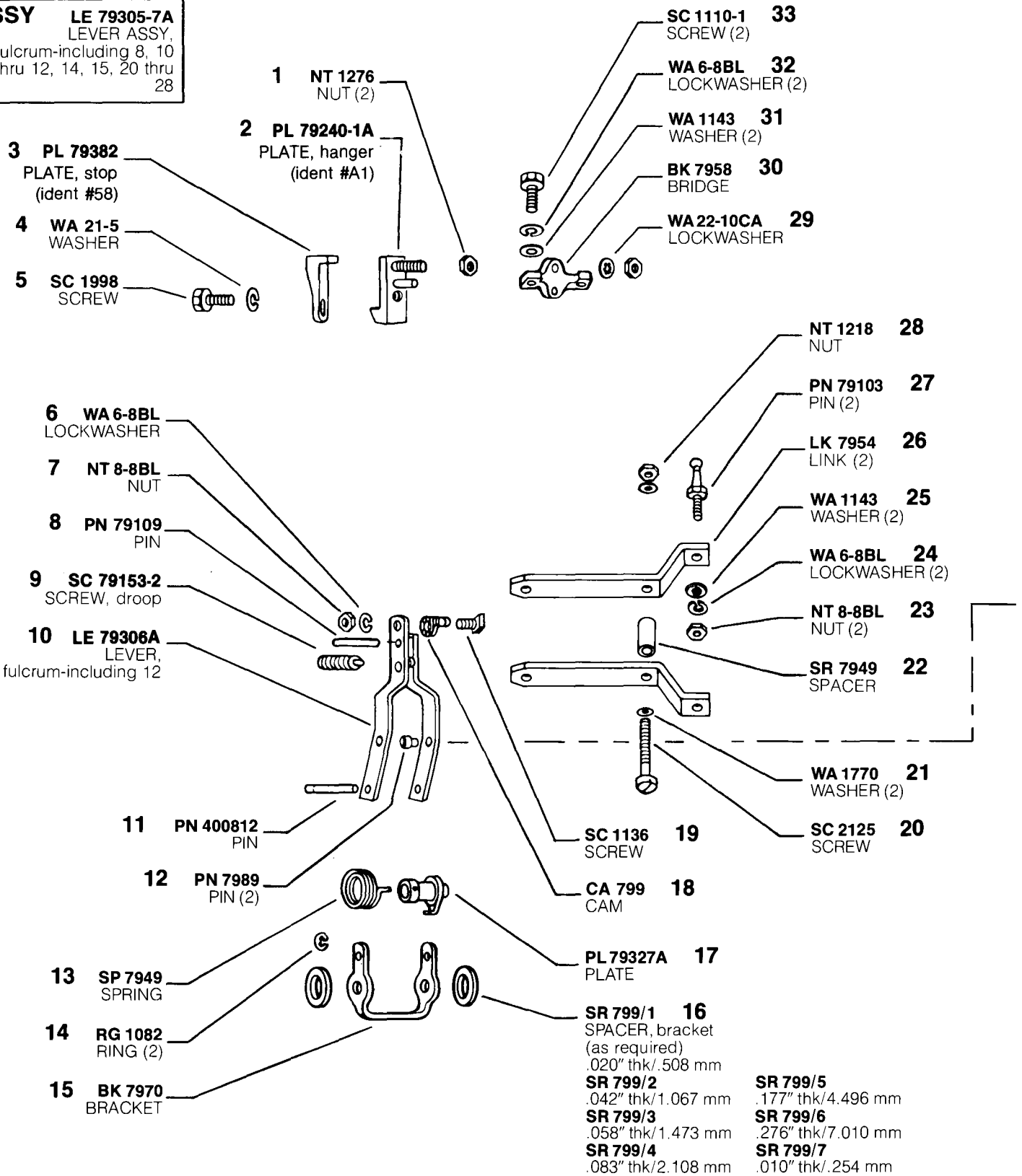
MODEL APE 8VG 110A 7558

ASSY GVB/C7559
GOVERNOR ASSY

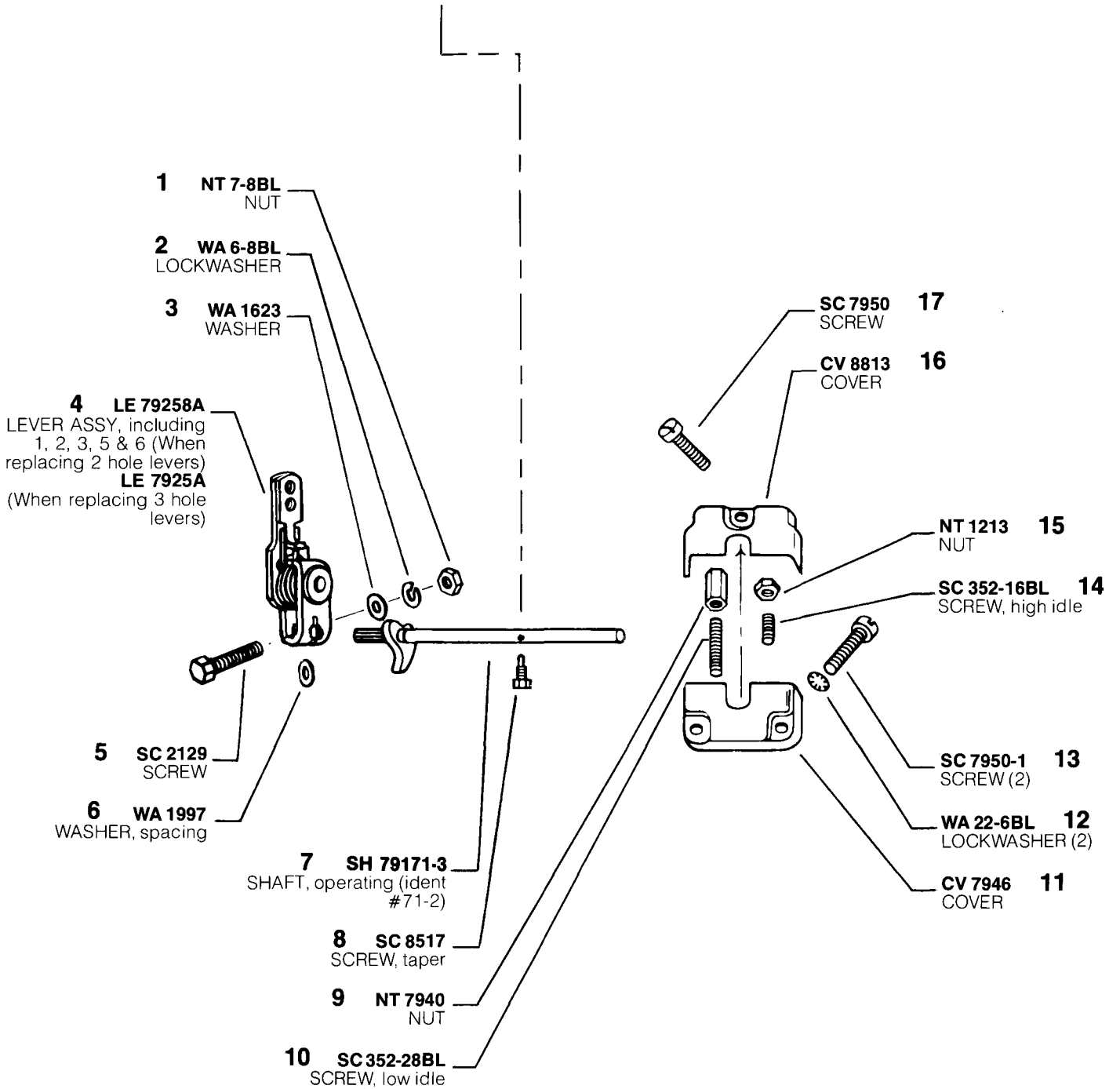


*Quantity used is one, unless otherwise indicated in parenthesis () following description of part.

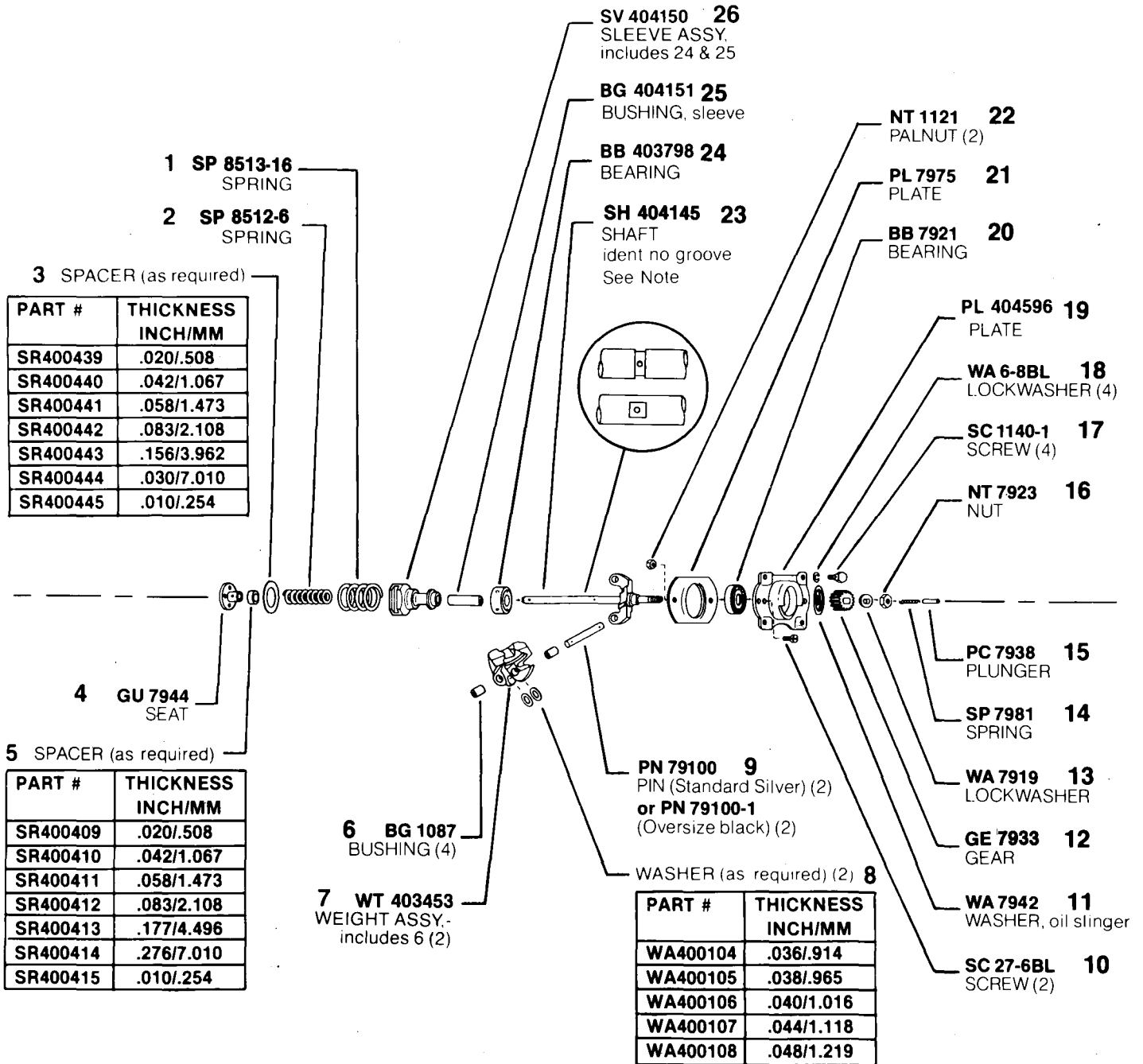
ASSY LE 79305-7A
LEVER ASSY,
 fulcrum-including 8, 10
 thru 12, 14, 15, 20 thru
 28



MODEL APE 8VG 110A 7558



MODEL APE 8VG 110A 7558

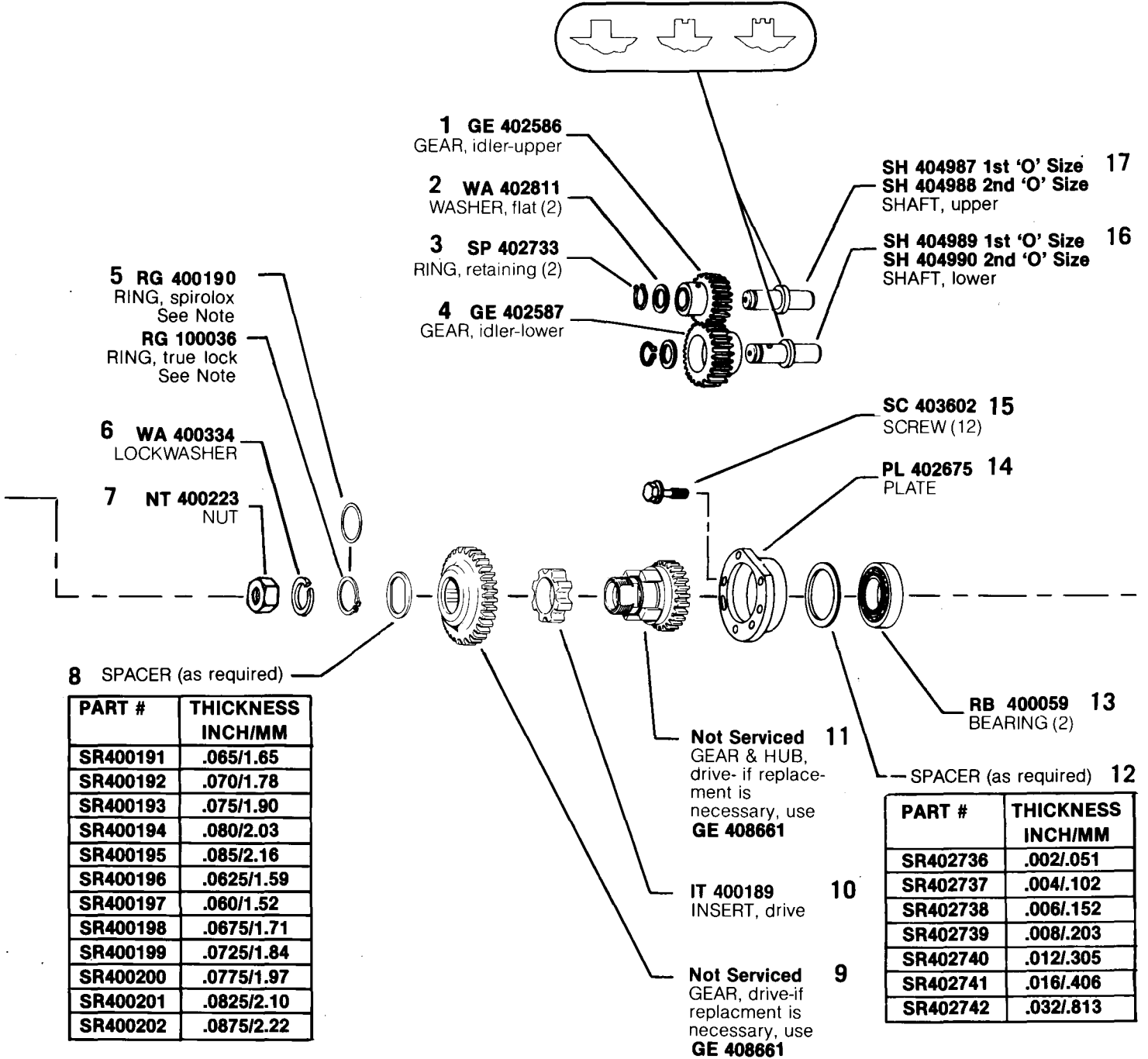


NOTE: When replacing shaft (#23 w/groove) with latest shaft (SH 404145 no groove) BG404151 (25) MUST be used. Shaft with groove used BG400118.

MODEL APE 8VG 110A 7558

ASSY GE 408661
 (RUBBER DRIVE)
 DRIVE ASSY-including
 5, 8 thru 11
 See Note

PRODUCTION - No Groove
 1st 'O' SIZE - One Groove
 2nd 'O' SIZE - Two Grooves



8 SPACER (as required)

| PART # | THICKNESS INCH/MM |
|----------|----------------------|
| SR400191 | .065/1.65 |
| SR400192 | .070/1.78 |
| SR400193 | .075/1.90 |
| SR400194 | .080/2.03 |
| SR400195 | .085/2.16 |
| SR400196 | .0625/1.59 |
| SR400197 | .060/1.52 |
| SR400198 | .0675/1.71 |
| SR400199 | .0725/1.84 |
| SR400200 | .0775/1.97 |
| SR400201 | .0825/2.10 |
| SR400202 | .0875/2.22 |

11 **Not Serviced**
 GEAR & HUB,
 drive- if replace-
 ment is
 necessary, use
GE 408661

10 IT 400189
 INSERT, drive

9 **Not Serviced**
 GEAR, drive-if
 replacment is
 necessary, use
GE 408661

| PART # | THICKNESS INCH/MM |
|----------|----------------------|
| SR402736 | .002/.051 |
| SR402737 | .004/.102 |
| SR402738 | .006/.152 |
| SR402739 | .008/.203 |
| SR402740 | .012/.305 |
| SR402741 | .016/.406 |
| SR402742 | .032/.813 |

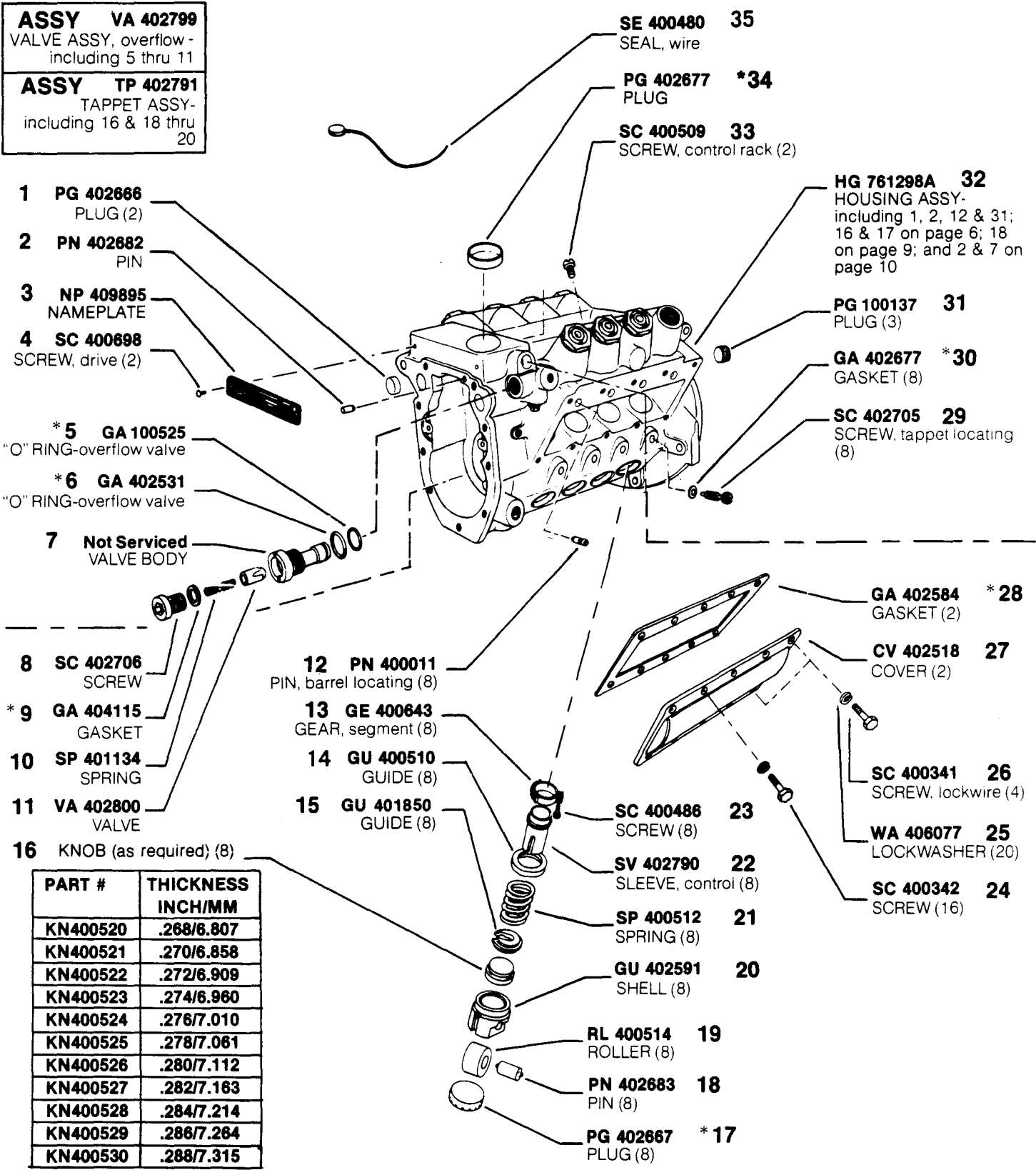
#5 NOTE: Earlier rubber drive assy GE 403795 used RG 400190 (Spirolox ring), later assy GE 408661 using RG 100036 (true lock ring). Spirolox & true lock rings are NOT interchangeable.

ASSY NOTE: Pumps equipped with GE 7991A "Friction Clutch" refer to Service Instructions Model 8VG Parts Bulletin P2 for Parts.

MODEL APE 8VG 110A 7558

ASSY VA 402799
VALVE ASSY, overflow -
including 5 thru 11

ASSY TP 402791
TAPPET ASSY-
including 16 & 18 thru
20



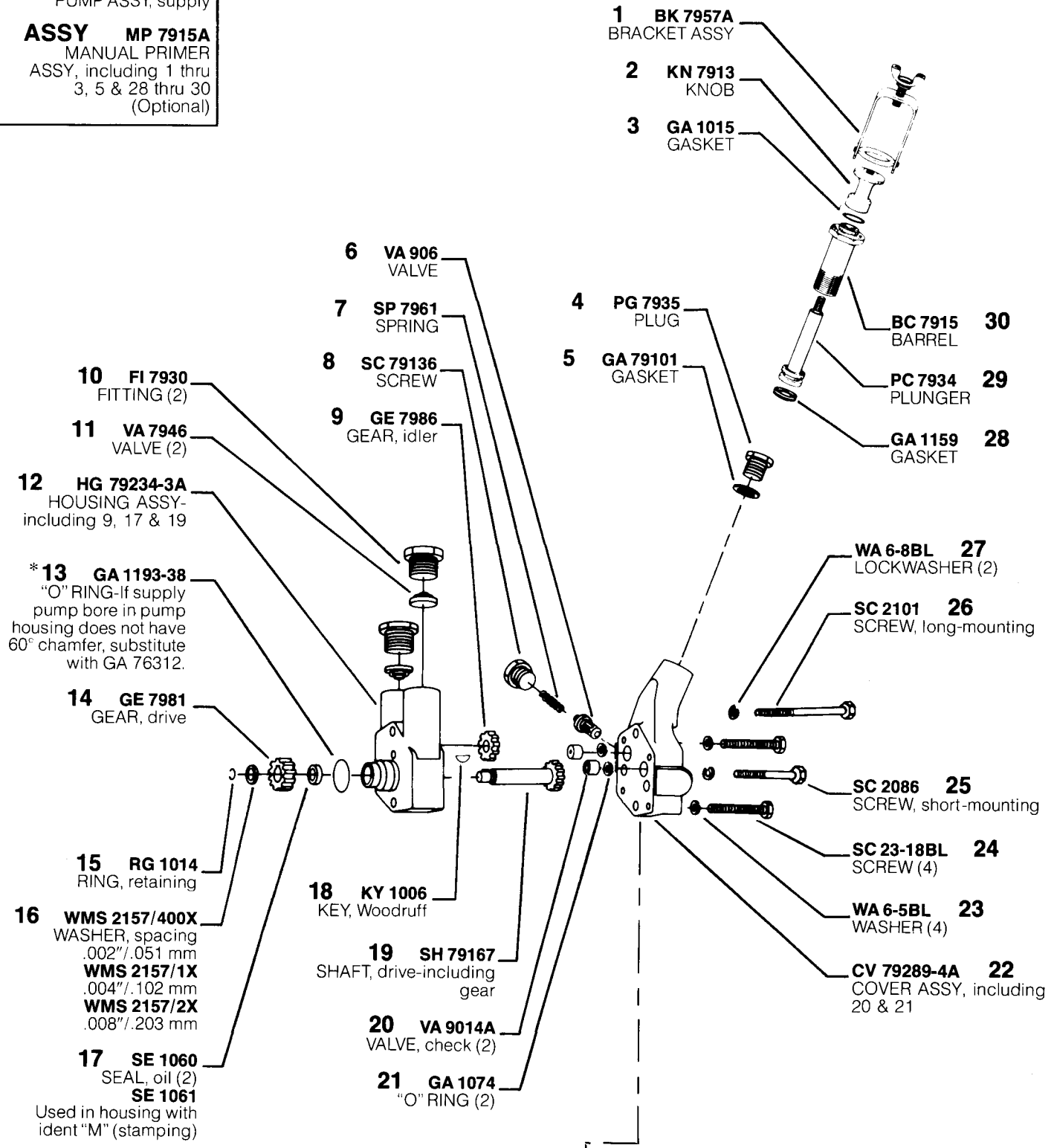
| PART # | THICKNESS INCH/MM |
|----------|----------------------|
| KN400520 | .268/6.807 |
| KN400521 | .270/6.858 |
| KN400522 | .272/6.909 |
| KN400523 | .274/6.960 |
| KN400524 | .276/7.010 |
| KN400525 | .278/7.061 |
| KN400526 | .280/7.112 |
| KN400527 | .282/7.163 |
| KN400528 | .284/7.214 |
| KN400529 | .286/7.264 |
| KN400530 | .288/7.315 |

*Denotes parts included in Pump Repair Gasket Kit-KT 76480.

MODEL APE 8VG 110A 7558

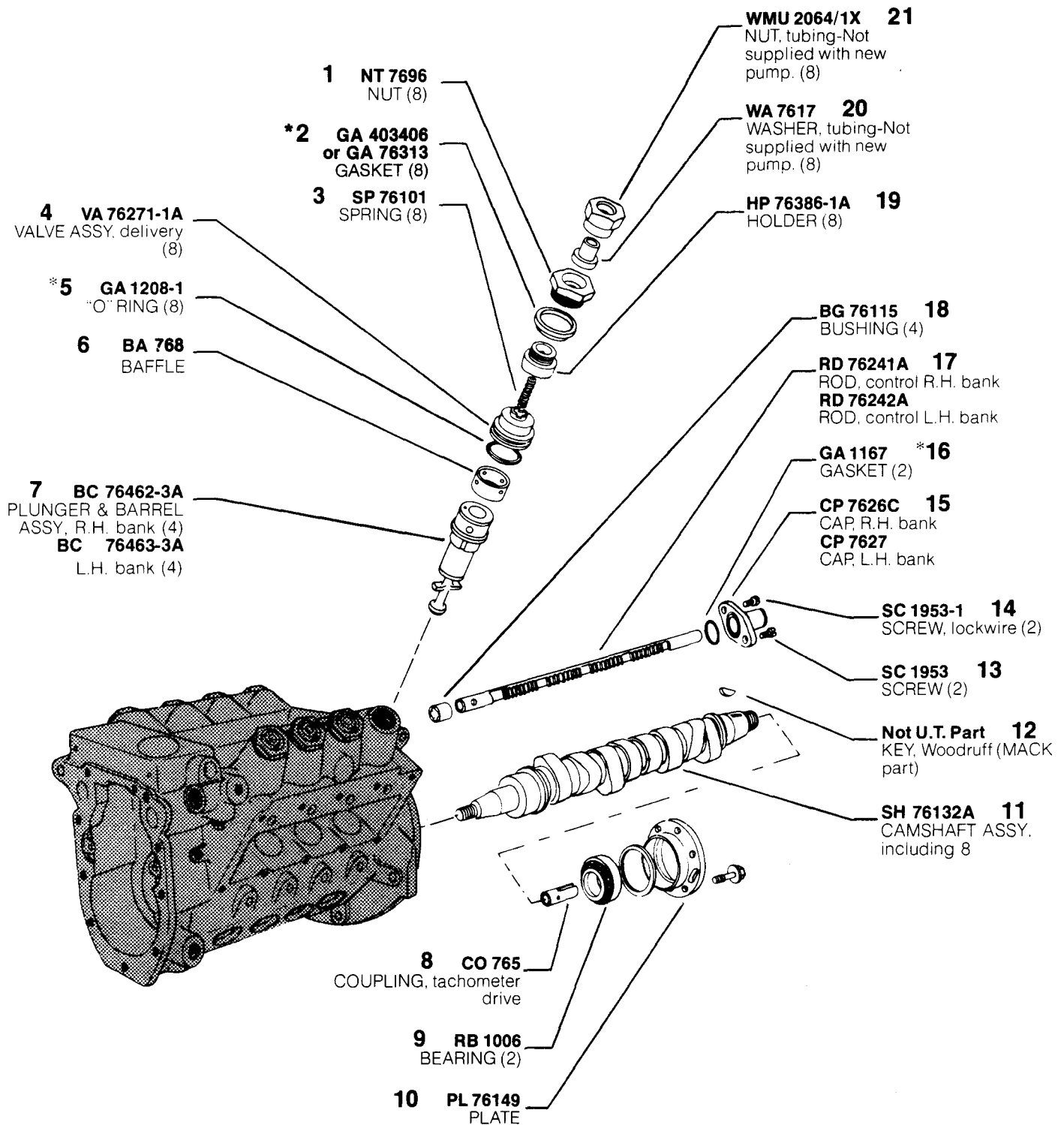
ASSY SGE 20A6635A
PUMP ASSY, supply

ASSY MP 7915A
MANUAL PRIMER
ASSY, including 1 thru
3, 5 & 28 thru 30
(Optional)



*Denotes parts included in Pump Repair Gasket Kit-KT 76480.

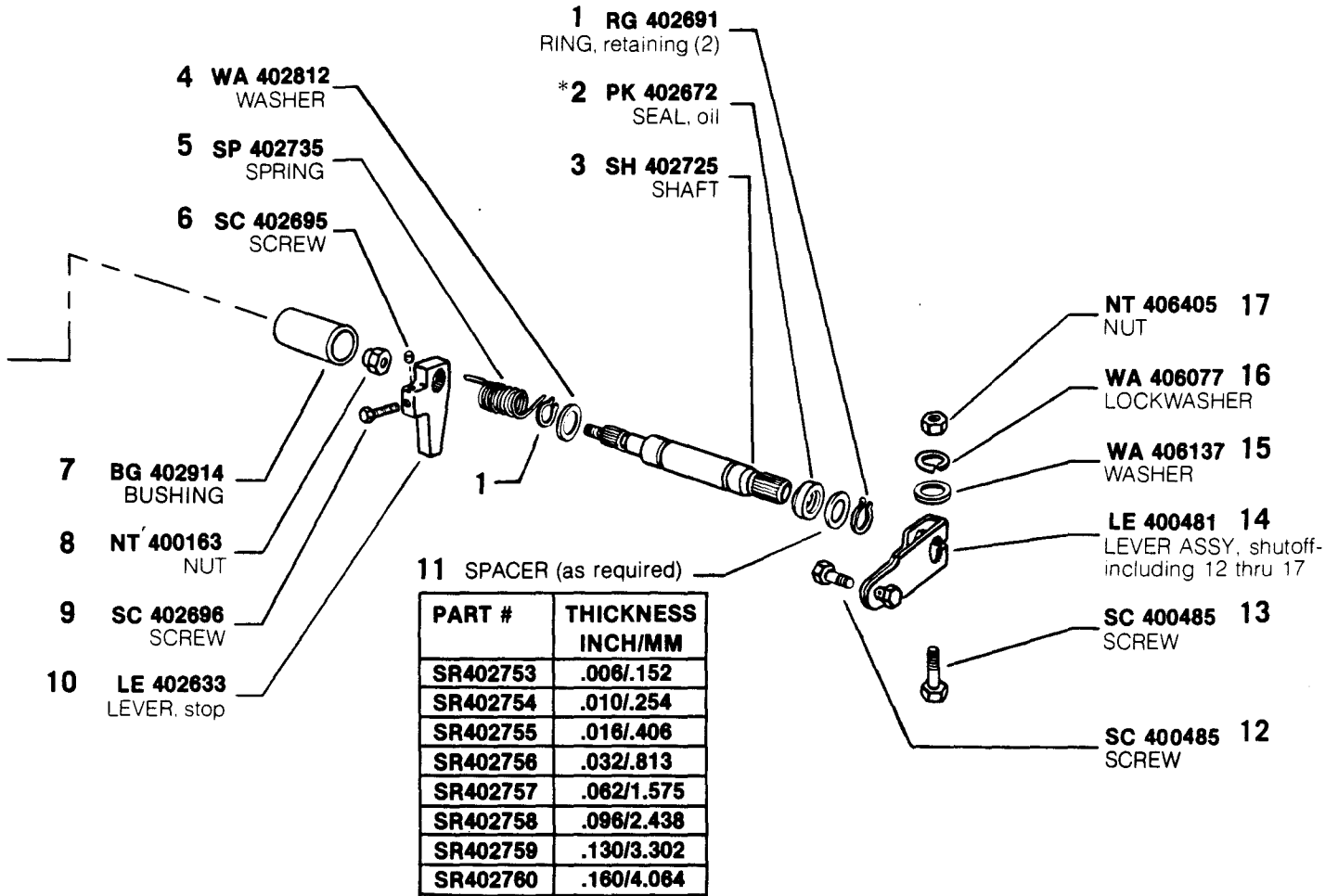
MODEL APE 8VG 110A 7558



*Denotes parts included in Pump Repair Gasket Kit-KT 76480.

MODEL APE 8VG 110A 7558

ASSY LE 79298A
 LEVER ASSY, inner
 stop-including 6, 9 & 10



*Denotes parts included in Pump Repair Gasket Kit-KT 76480.

MODEL APE 8VG 110A 7558

