

9553

A & B



**UNITED
TECHNOLOGIES**
DIESEL SYSTEMS

PUMP ROTATION:

Clockwise

FIRING ORDER:

1-5-3-6-2-4

MOUNTING:

L.H.

SPECIAL FEATURES:

Vertical Bowden Wire Shut-off, Puff Limiter Excess Fuel Device, Dual Range Intravance® Camshaft Assy

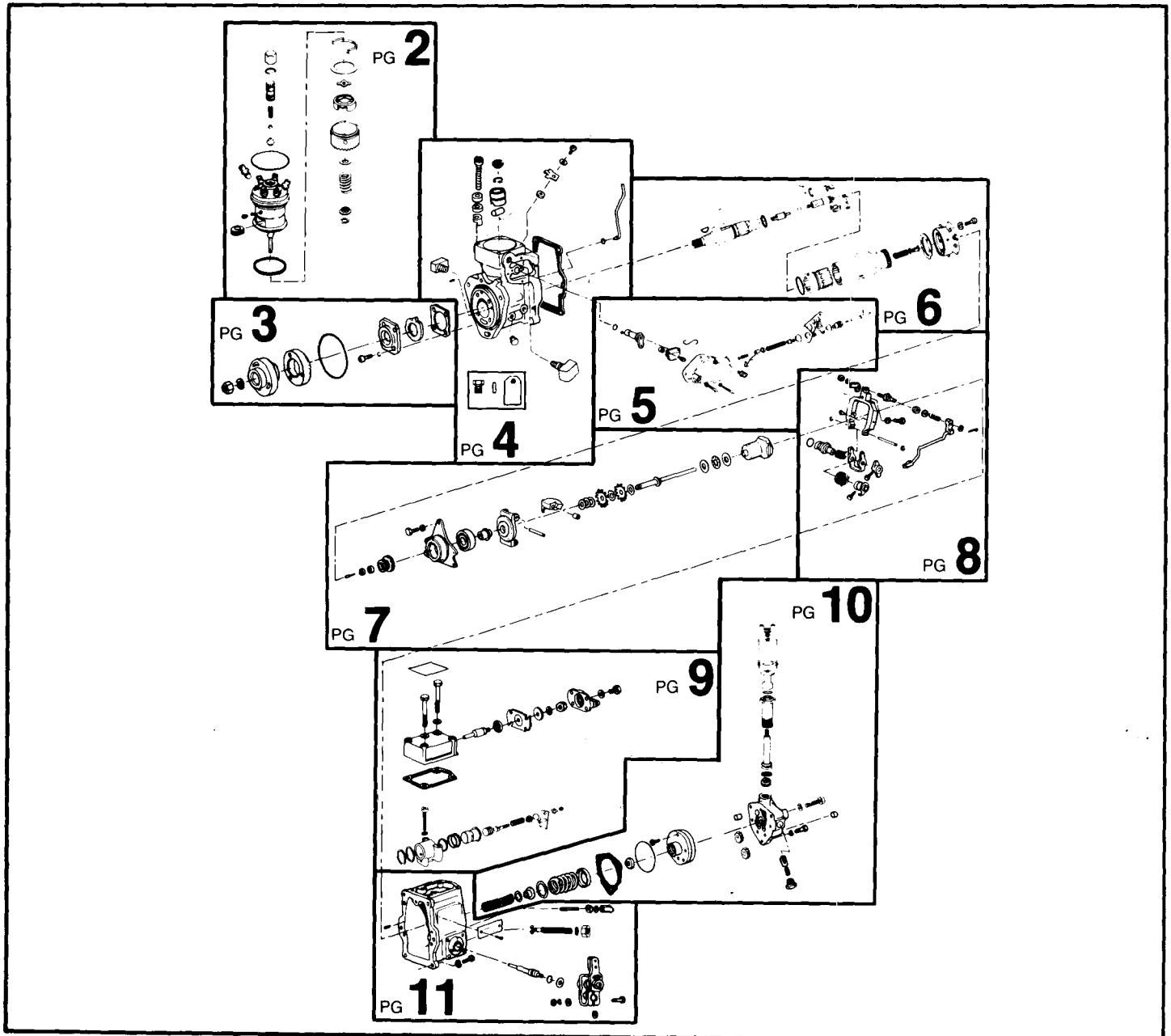
INTERNATIONAL HARVESTER
100 6A 100A 9553

Special Information:

SERVICE PARTS

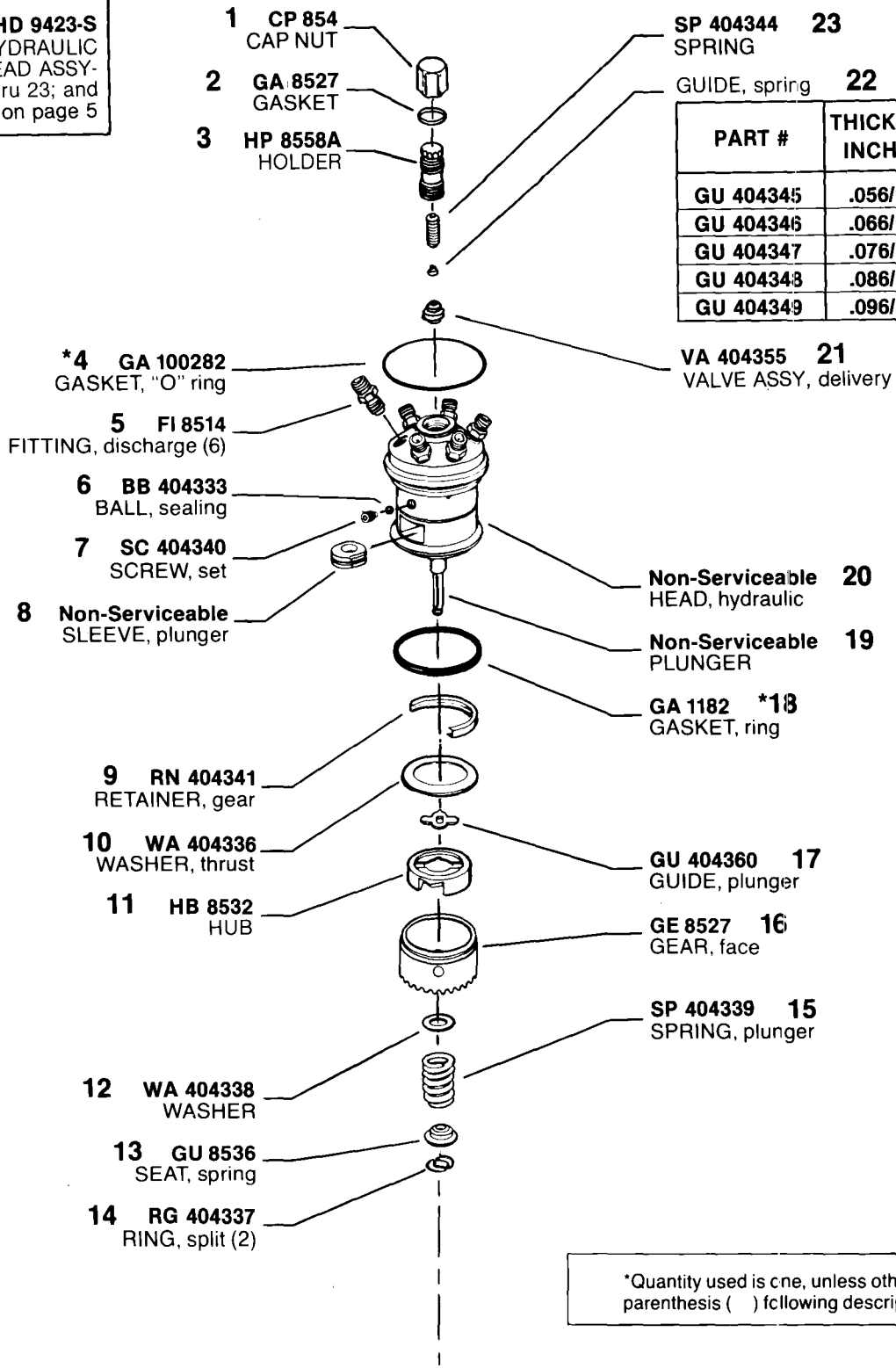
Following are all parts, part numbers, pump codes and calibrations for the *Model: 100 6A 100A 9553*. The exploded view drawing below is detailed with part

numbers listed on the pages indicated. Refer to the Index Section for explanations of codes and abbreviations.



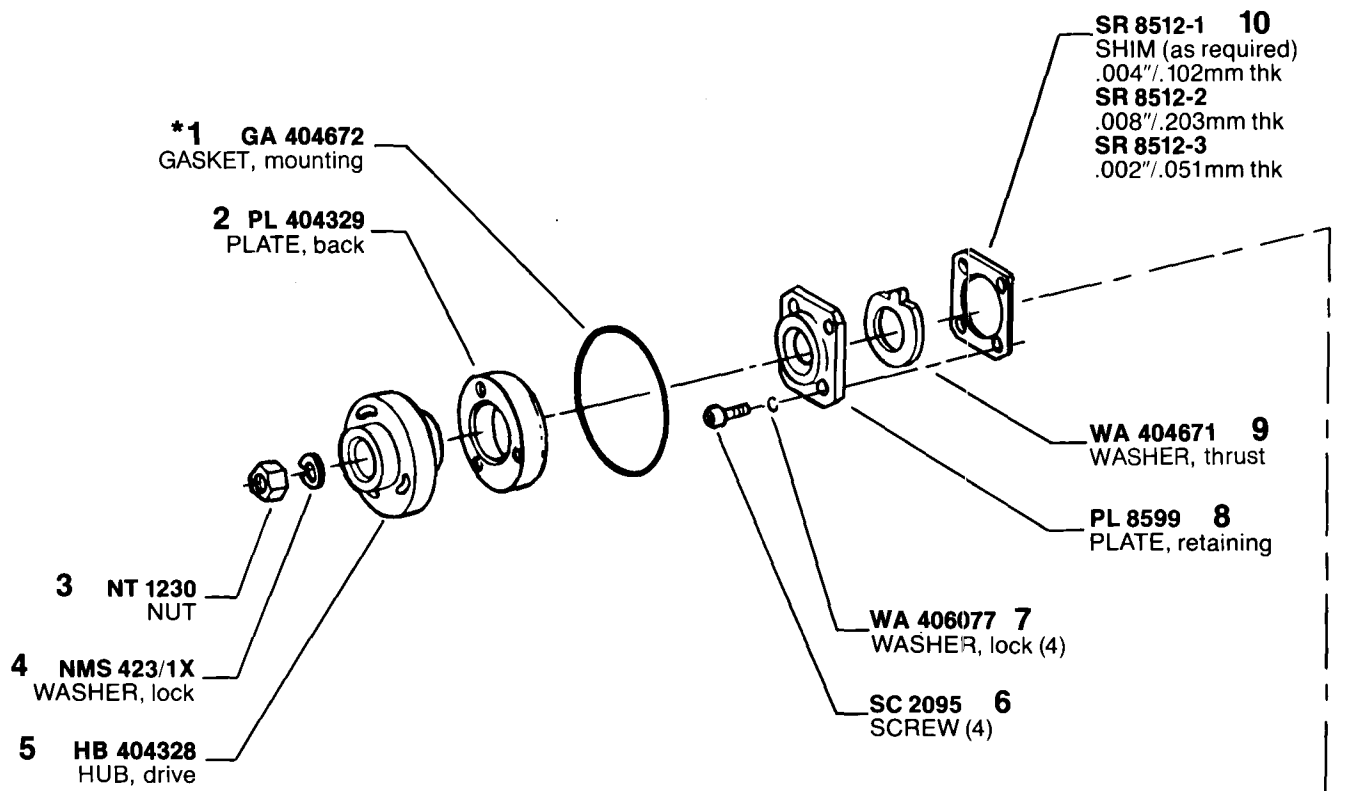
MODEL 100 6A 100A 9553

ASSY HD 9423-S
10MM HYDRAULIC
HEAD ASSY-
including 1 thru 23; and
3 on page 5



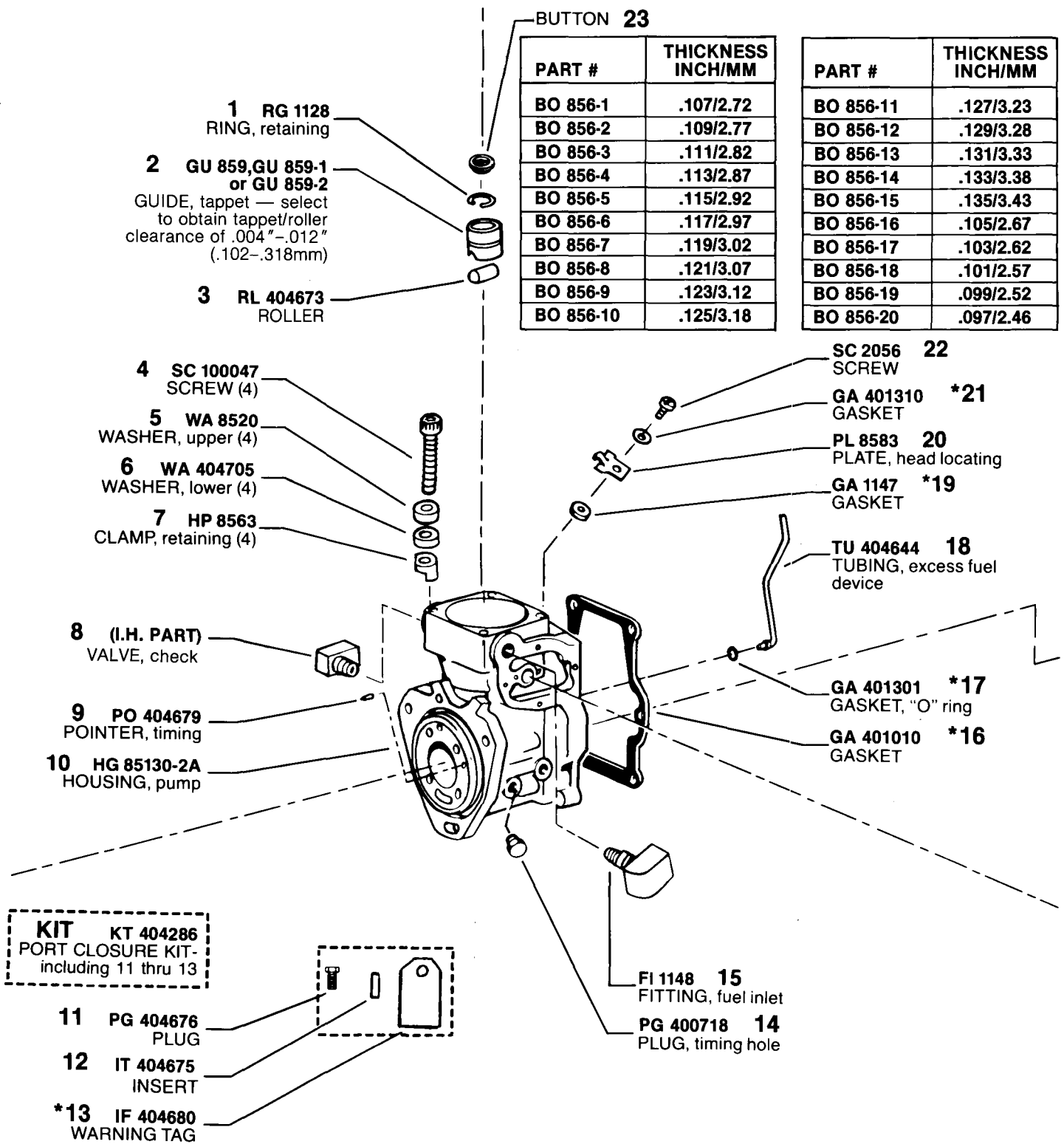
*Quantity used is one, unless otherwise indicated in parenthesis () following description of part.

MODEL 100 6A 100A 9553



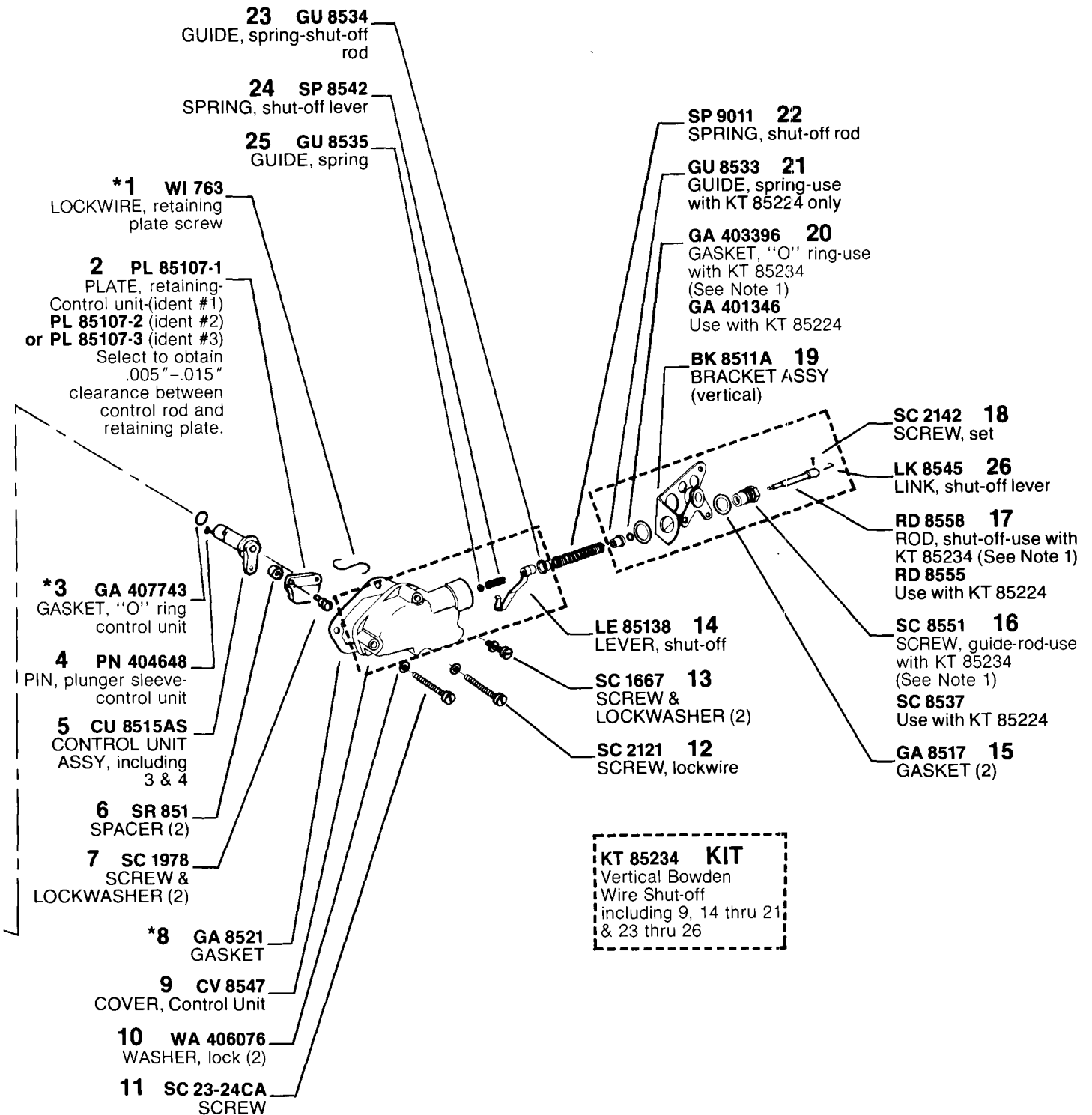
MODEL 100 6A 100A 9553

*Denotes parts in Repair Gasket Kit, KT 85195.



MODEL 100 6A 100A 9553

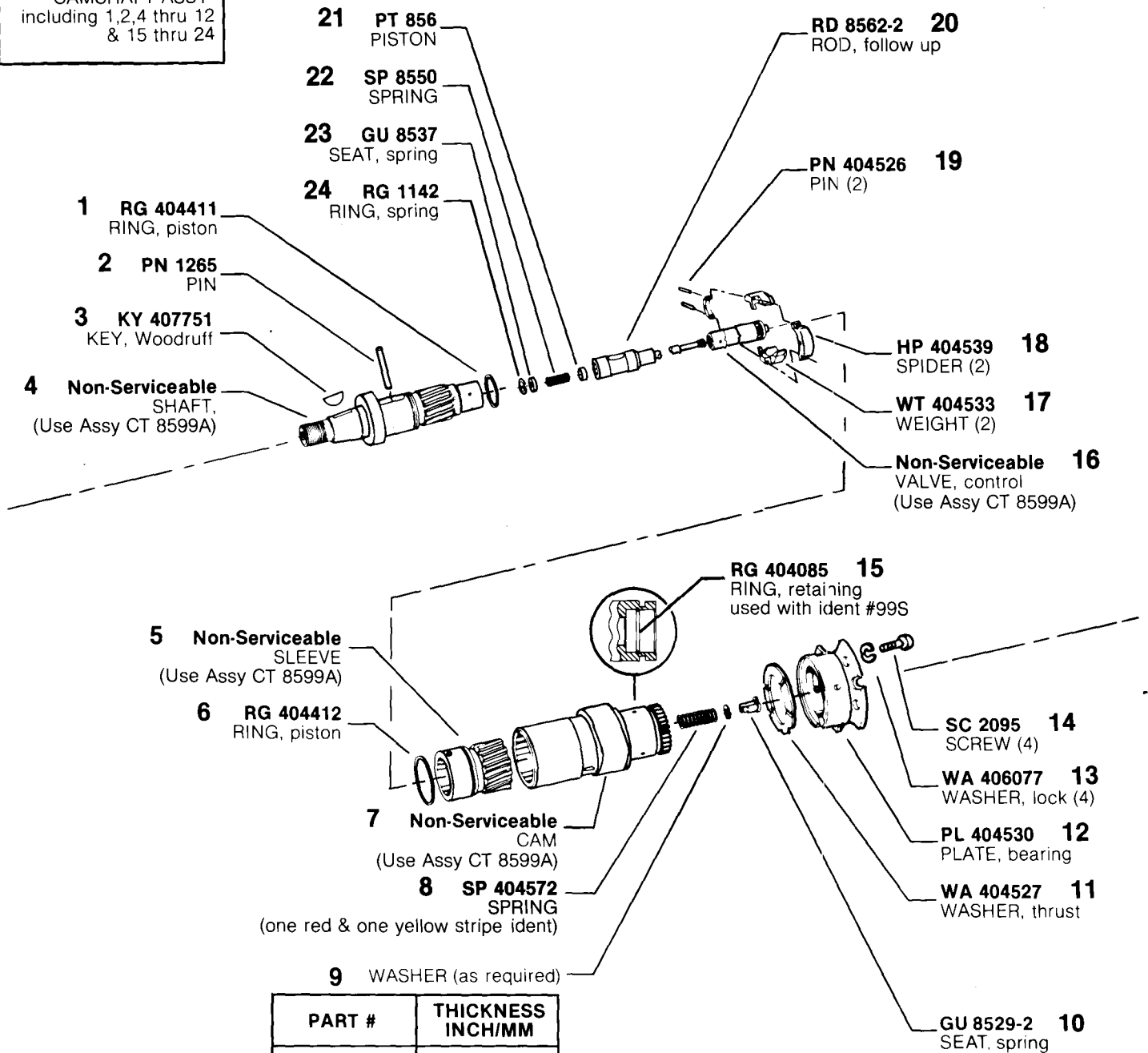
*Denotes parts in Repair Gasket Kit, KT 85195.



NOTE: 1. Bowden Wire shut-off rod RD 8558 (17), screw SC 8551 (16) and "O" ring GA 403396 (20) must be used together since rod diameter is larger. Spring seat GU 8533 (21) not needed when these parts are used.

MODEL 100 6A 100A 9553

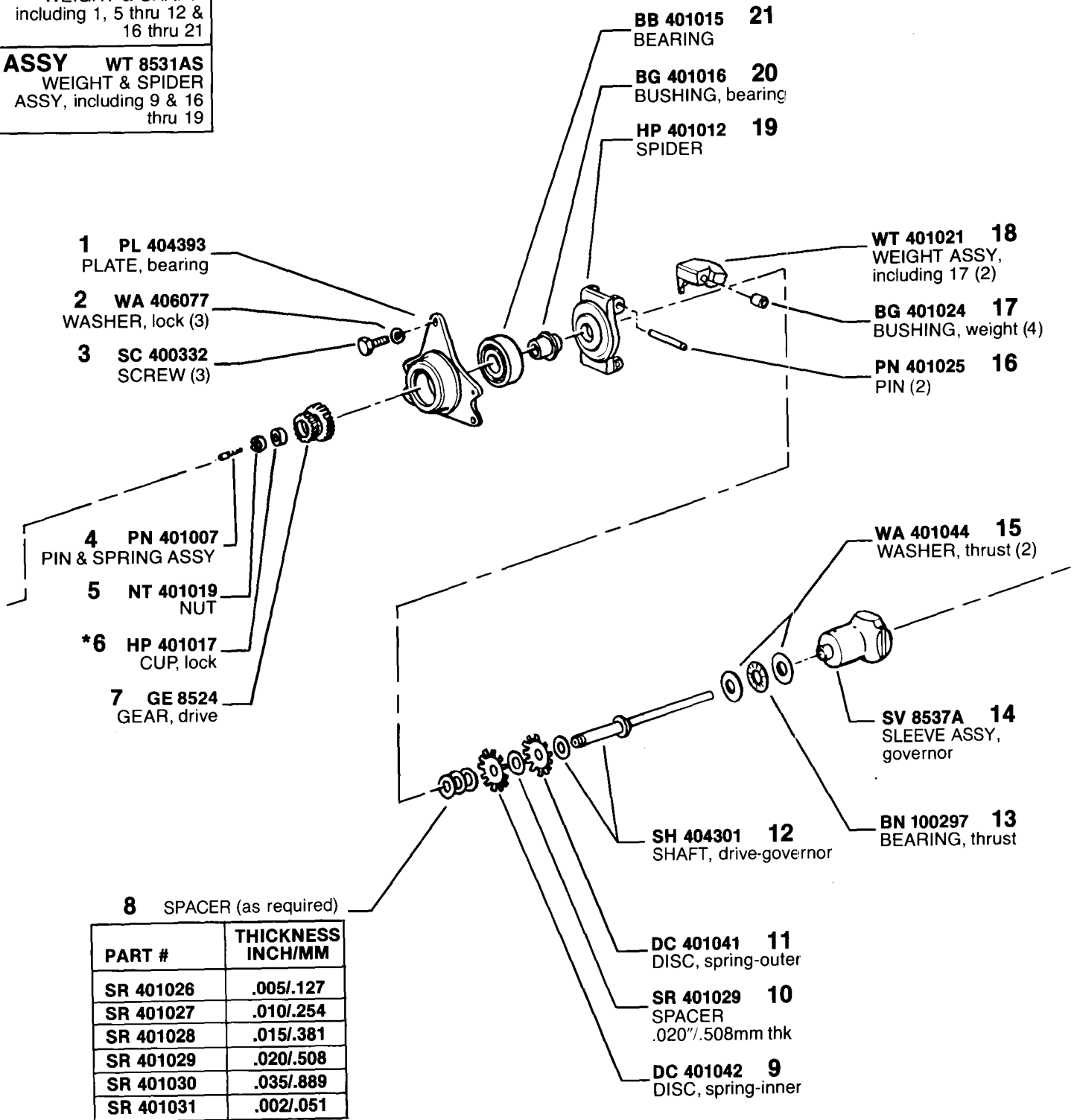
ASSY CT 8599A
INTRAVANCE®
CAMSHAFT ASSY-
including 1,2,4 thru 12
& 15 thru 24



MODEL 100 6A 100A 9553

ASSY WT 8535A
WEIGHT & SHAFT-
including 1, 5 thru 12 &
16 thru 21

ASSY WT 8531AS
WEIGHT & SPIDER
ASSY, including 9 & 16
thru 19

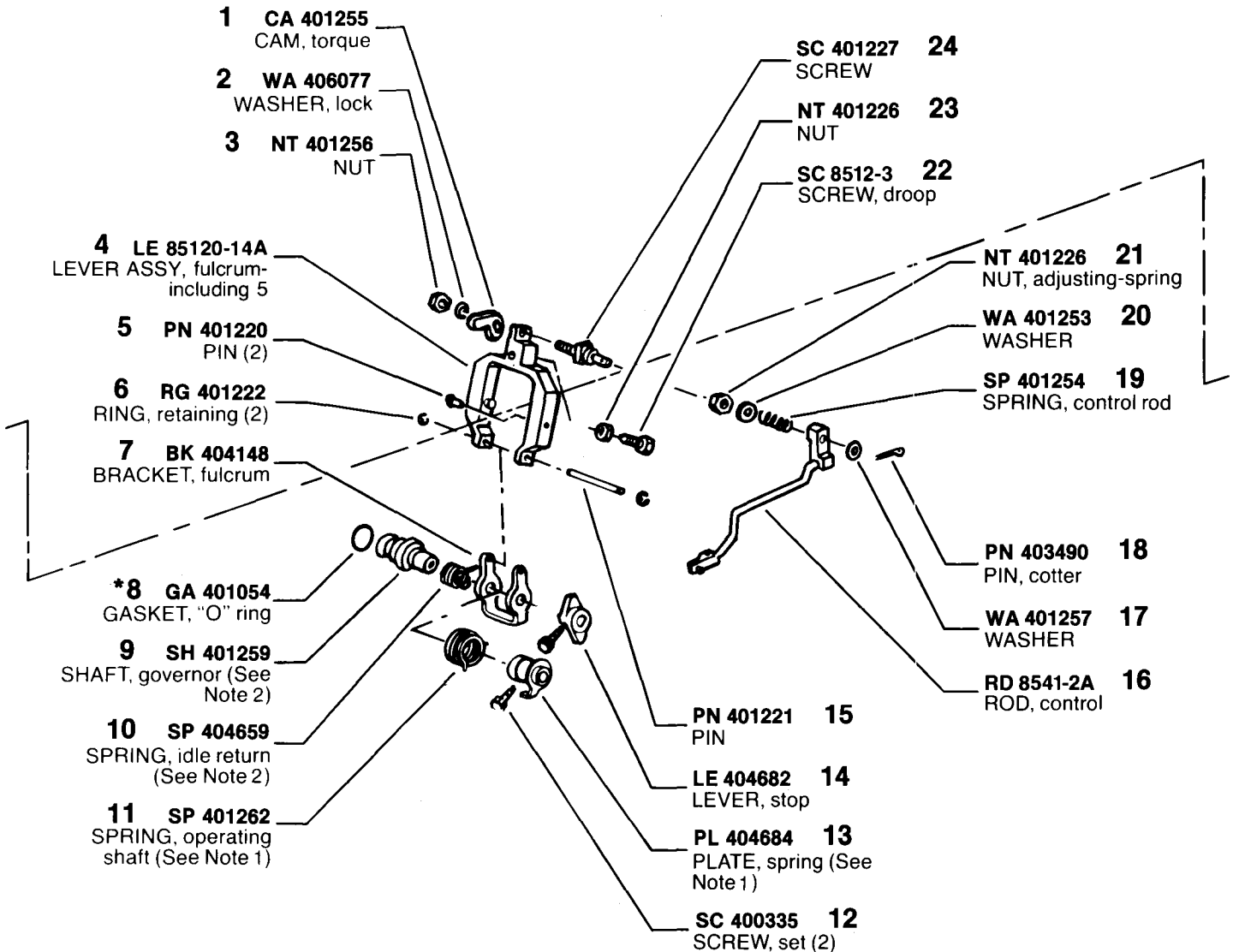


PART #	THICKNESS INCH/MM
SR 401026	.005/.127
SR 401027	.010/.254
SR 401028	.015/.381
SR 401029	.020/.508
SR 401030	.035/.889
SR 401031	.002/.051

MODEL 100 6A 100A 9553

*Denotes parts in Repair Gasket Kit, KT 85195.

ASSY LE 85128-10A
LEVER & ROD ASSY,
fulcrum-including 1
thru 7, 15 thru 21 & 24



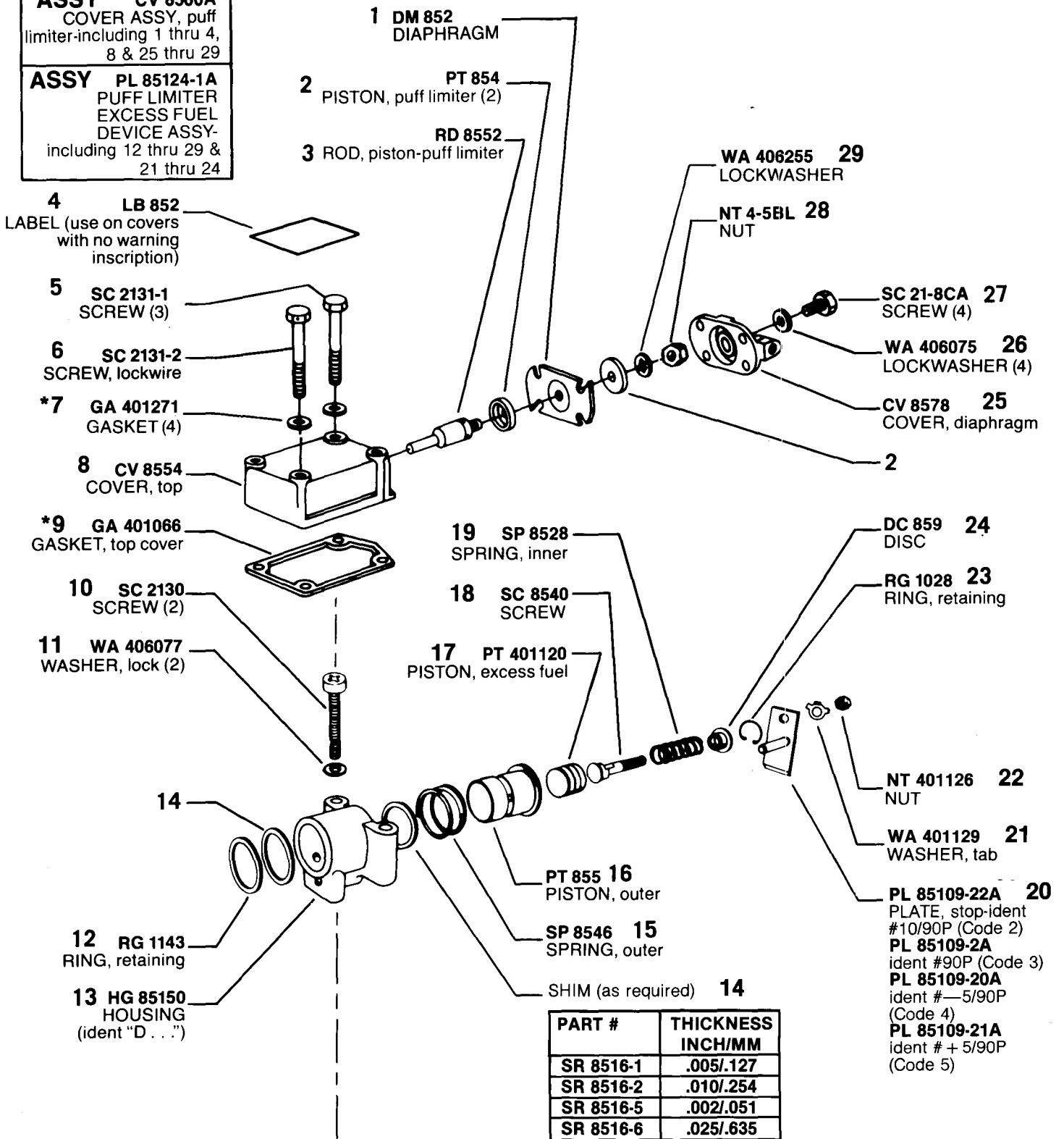
NOTE 1: If operating shaft spring has red or yellow band, replace spring (11) and spring plate (13).

NOTE 2: When replacing governor shaft (9) or governor operating shaft (5 on page 11), see if governor has idle return spring (10). If not, replace governor and operating shafts with SH 85153A which includes 9, 10; and 5 on page 11.

MODEL 100 6A 100A 9553

ASSY CV 8560A
COVER ASSY, puff limiter-including 1 thru 4, 8 & 25 thru 29

ASSY PL 85124-1A
PUFF LIMITER EXCESS FUEL DEVICE ASSY-including 12 thru 29 & 21 thru 24

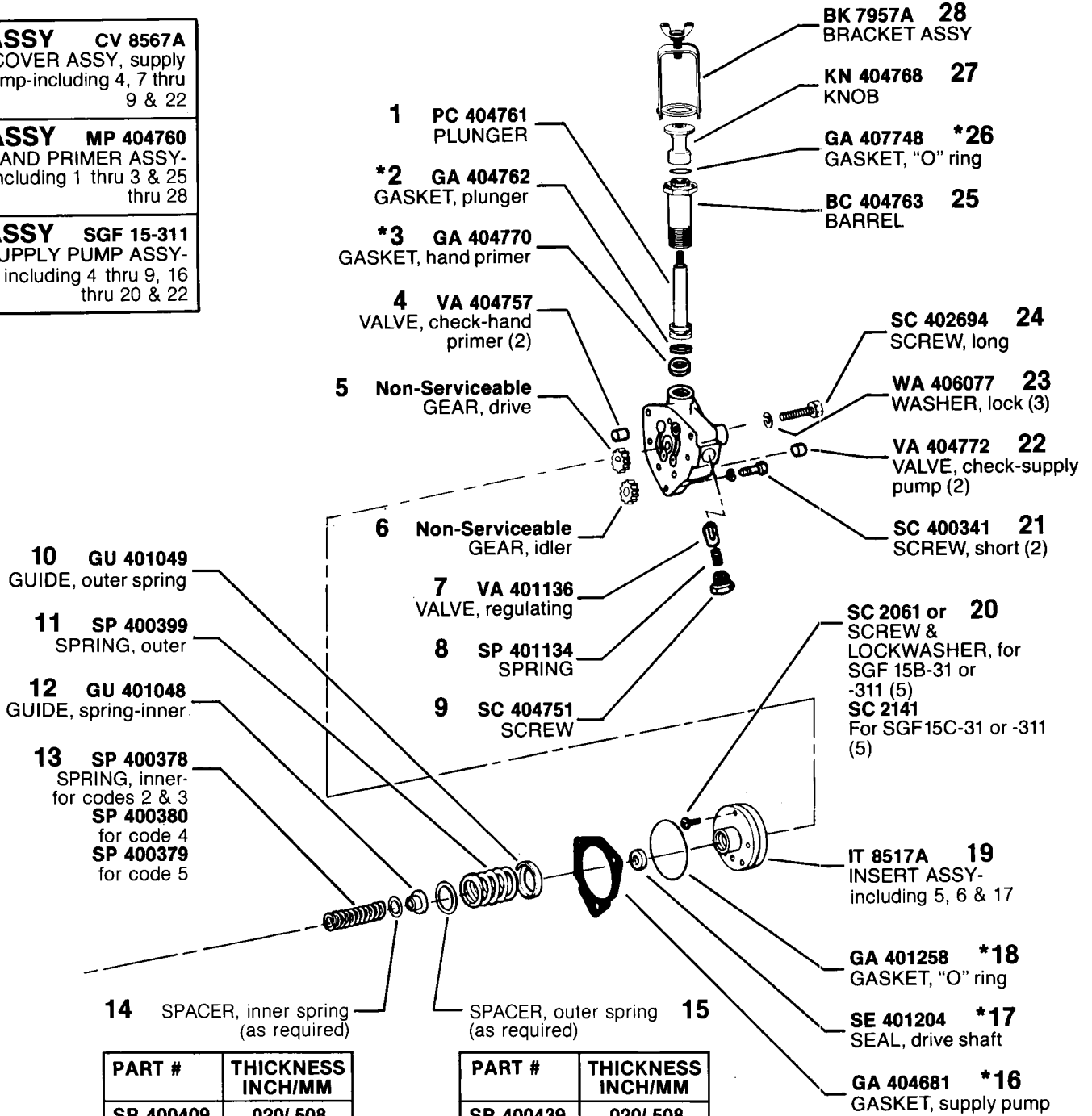


PART #	THICKNESS INCH/MM
SR 8516-1	.005/.127
SR 8516-2	.010/.254
SR 8516-5	.002/.051
SR 8516-6	.025/.635
SR 8616-7	.050/1.27

*Denotes parts in Repair Gasket Kit, KT 85195.

MODEL 100 6A 100A 9553

- ASSY CV 8567A**
COVER ASSY, supply pump-including 4, 7 thru 9 & 22
- ASSY MP 404760**
HAND PRIMER ASSY-including 1 thru 3 & 25 thru 28
- ASSY SGF 15-311**
SUPPLY PUMP ASSY-including 4 thru 9, 16 thru 20 & 22

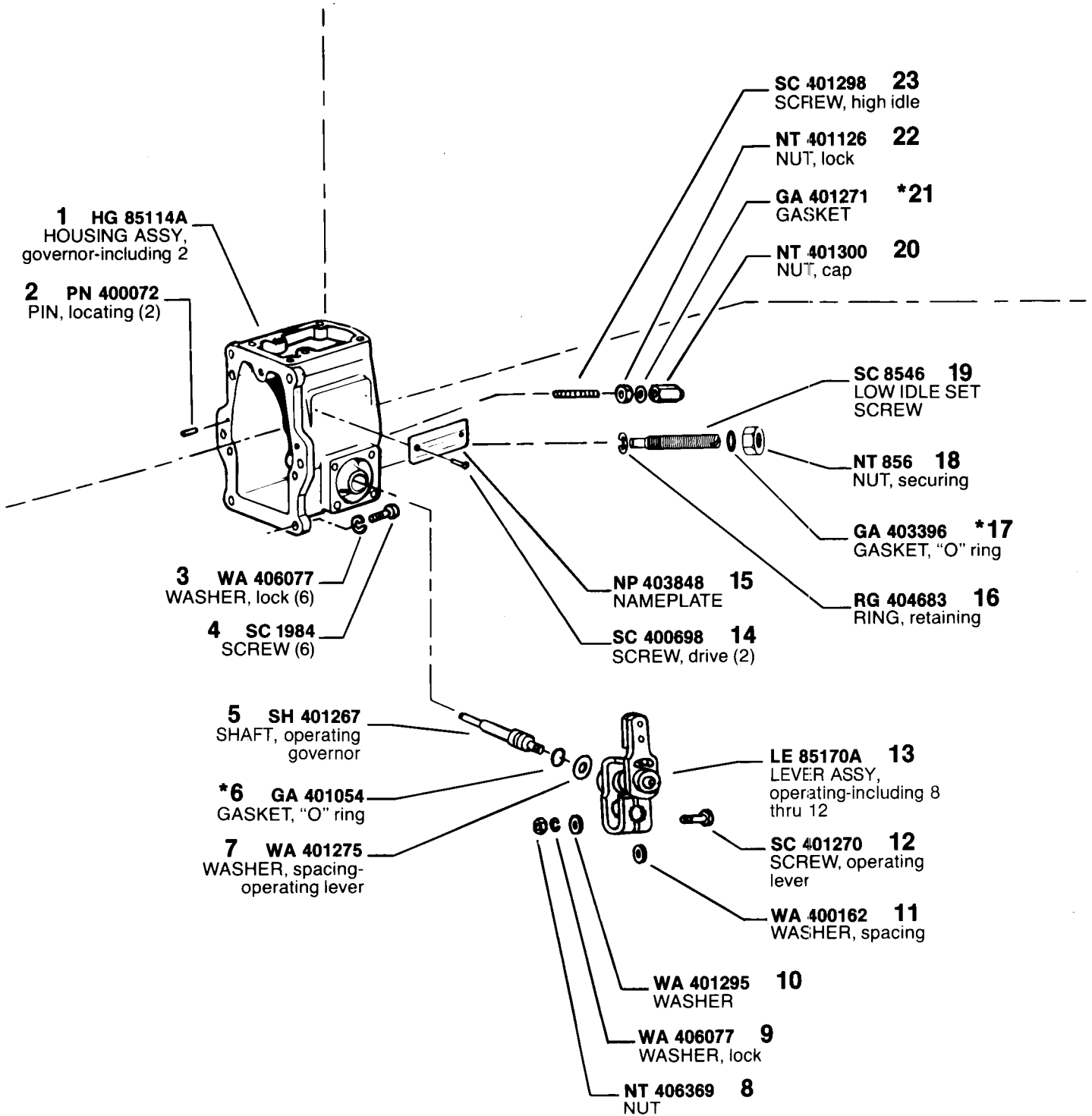


PART #	THICKNESS INCH/MM
SR 400409	.020/.508
SR 400410	.042/1.07
SR 400411	.058/1.47
SR 400412	.083/2.11
SR 400413	.177/4.50
SR 400414	.276/7.01
SR 400415	.010/.254
SR 400416	.005/.127

PART #	THICKNESS INCH/MM
SR 400439	.020/.508
SR 400440	.042/1.07
SR 400441	.058/1.47
SR 400442	.083/2.11
SR 400443	.156/3.96
SR 400444	.030/.762
SR 400445	.010/.254

*Denotes parts in Repair Gasket Kit, KT 85195.

MODEL 100 6A 100A 9553



MODEL 100 6A 100A 9553

*Denotes parts in Repair Gasket Kit, KT 85195.

