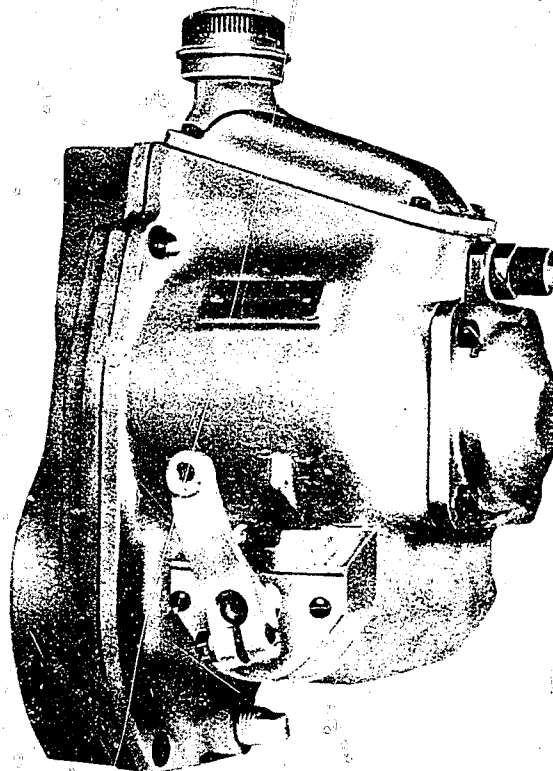


GVA
B

AMERICAN BOSCH CORPORATION SPRINGFIELD MASS U S A

These pages supersede
pages D323 complete
issued June, 1944

AMERICAN BOSCH VARIABLE SPEED GOVERNOR



TYPE GVA . . . / . . . B

PARTS LIST

These manual pages contain a complete list of service parts for American Bosch type GVA.../...B governors. Separate control rack stops, as used with some governors, are also included.

All illustration numbers refer to the exploded views which will be found immediately following the parts list section. Illustration numbers are intended for reference purposes only and should never be used when ordering parts.

The first parts list covers the GVA.../...B1 governor which has been used as a basic list. Other type governors are listed as variations of the GVA.../...B1 and refer back to the basic list.

Rules For Ordering Parts

1. Give part number and description of part. Never use illustration number.
2. Include complete type designation of governor as given on the governor name plate.

AMERICAN BOSCH CORPORATION SPRINGFIELD MASS, U.S.A

GVA.../...B1

This governor has operating lever and speed adjustment at right side when facing governor end of pump.

Illustration Number	Part Number	Quantity Required	Description of Parts
1	CV 7962A	1	COVER ASSEMBLY, end, consisting of end cover (this part not supplied separately), parts 3, 4, 7 and dowel pin
2	*GA 7988	1	GASKET, end cover
3	*PK 795	2	SEAL, oil
4	*BG 793	2	BUSHING
7	SC 7970	1	PLUG, drain
9	WA 7916	4	WASHER, plain, end cover screw
10	WA 22-8	4	WASHER, lock, end cover screw
11	SC 6729B	4	SCREW, end cover fastening
12	FL 798	1	FLANGE, stop
13	SC 61-8	3	SCREW, stop flange fastening
14	*SC 7938	2	SCREW, stop adjustment
15	*NT 796	2	NUT, lock, adjustment screw
16	CV 7922	1	COVER, stop flange
17	CV 7921	1	PLATE, stop flange
18	SC 7934	3	SCREW, flange cover and plate fastening
19	WA 6-4	2	WASHER, lock, plate screw
20	SH 7942A	1	SHAFT, operating lever
21	*SC 7930	1	SCREW, spring hub fastening
22	LE 7954	1	LEVER, operating
23	*SC 7961	1	SCREW, clamping
24	*NT 7919	1	NUT, clamping screw
25	*PN 2-20	1	PIN, cotter
26	SC 7963	4	SCREW, end cap fastening
27	WA 22-8	4	WASHER, lock
28	WA 7916	4	WASHER, plain
29	CP 799	1	CAP, end
30	*BB 799	1	BEARING, ball
31	*GA 7989	1	GASKET, end cap
32	CP 793	1	CAP, bumper spring adjusting screw
33	*SC 7940	1	SCREW, bumper spring adjusting
34	*GA 7965	1	GASKET, bumper spring cap
35	NT 798	1	NUT, lock, adjustment screw
36	SP 7946A	1	SPRING, bumper
43	CV 7975	1	COVER, top
44	*GA 7992	1	GASKET, top cover
45	NP 7631	1	PLATE, name
46	SC 150-2	2	RIVET, plate fastening
47	*CV 76119A	1	CAP, breather
48	WA 7916	4	WASHER, plain, top cover screw
49	WA 22-8 BL	4	WASHER, lock, top cover screw
50	SC 7963	4	SCREW, top cover fastening
51	LE 7933A	1	YOKE ASSEMBLY, fulcrum (individual parts not serviced separately)
52	PL 798A	1	HUB, spring
53	*SP 7929	1	SPRING, operating lever
54	SC 7929	2	SCREW, pivot
55	WA 22-10	2	WASHER, lock, pivot screw
56	CA 792/1	1	CAM, stop
57	SC 7931	1	SCREW, stop cam fastening
58	WA 21-5	1	WASHER, lock, stop cam screw
59	NT 4-5	1	NUT, stop cam screw
60	PN 7917	1	PIN, linkage
61	WA 22-6	1	WASHER, lock, linkage pin
62	HP 795	1	ARM, extension
63	WA 5-8	1	WASHER, lock, control rack screw
64	SC 7937	1	SCREW, control rack fastening

*Fast moving parts

AMERICAN BOSCH CORPORATION SPRINGFIELD MASS U S A

Illustration Number	Part Number	Quantity Required	Description of Parts
65	PL 7915A	1	PLATE, stop
66	NT 8-8	2	NUT, stop plate adjusting
67	WA 1067	3	WASHER, plain
68	SC 57-10	2	SCREW, stop plate bridge fastening
69	BK 797	1	BRIDGE, stop plate
70	NT 793	1	NUT, spring seat
71	*WA 796	1	WASHER, star
72	GU 798/1	1	SEAT, spring
73	*SR 796	As required	SPACER, outer spring
74		As required	SPRING, inner governor
75		As required	SPRING, outer governor
			} for spring combinations, see table at end of list
76	SR 797/1	As required	SPACER, inner spring - .020" thick
	SR 797/2	As required	SPACER, inner spring - .042" thick
	SR 797/3	As required	SPACER, inner spring - .058" thick
	SR 797/4	As required	SPACER, inner spring - .083" thick
77	SV 794A	1	SLEEVE ASSEMBLY (individual parts not serviced separately)
**	WT 7915A	1	WEIGHT AND SHAFT ASSEMBLY (not shown assembled - includes parts 78-82)
78	SH 796A	1	SHAFT, weight
79	WT 7932A	1	WEIGHT ASSEMBLY, (not shown assembled) consists of two matched weights with needle bearings (80) and pins (81)
80	*BN 791	6	BEARING, needle
81	*PN 7921	2	PIN, (short) weight nose needle bearing
82	*PN 7918	2	PIN, (long) weight pivot
83	PL 799	1	PLATE, bearing
84	*BB 791	1	BEARING, ball
85	BK 799	1	BRIDGE, bearing
86	SC 63-8	4	SCREW, bearing bridge fastening
87	SC 57-7	3	SCREW, bearing plate fastening
88	GE 792	1	GEAR, driven
89	*WA 796	1	WASHER, star
90	NT 793	1	NUT, gear retaining
91	NT 7918	1	NUT, camshaft
92	WA 5-16	1	WASHER, lock
**	GE 7921A	1	GEAR ASSEMBLY, drive (not shown assembled - includes parts 93-98)
93	NT 795	1	NUT, drive gear fastening
94	*WA 795	1	WASHER, lock, drive gear nut
95	*DC 791	2	DISC, spring
96	*SR 794/1	As required	SPACER, drive gear 0.035" thick
	*SR 794/2	As required	SPACER, drive gear 0.049" thick
	*SR 794/3	As required	SPACER, drive gear 0.065" thick
97	GE 791	1	GEAR, drive
98	HB 797	1	HUB, drive gear
99	HG 7974	1	HOUSING
100	*GA 7984	1	GASKET, housing
102	NSR 494/22X	6	SCREW, housing mounting
106	*GA 7613	2	WASHER, gasket, end cover screw
107	WA 7916	2	WASHER, plain, end cover screw
108	SC 67298	2	SCREW, end cover fastening
109	NSR 736/20X	1	SCREW, housing mounting
110	SC 7641	1	PLUG, housing mounting

*Fast moving parts

**Not shown assembled

AMERICAN BOSCH CORPORATION, SPRINGFIELD, MASS., U.S.A.

Governor spring combinations (parts 74 and 75)

Governor Type	Illustration 74 Inner Spring	Illustration 75 Outer Spring	Spring Spacing Adjustment	
			Inner	Outer
GVA 225/450	SP 7927/4	_____	Flush	_____
GVA 225/475	SP 7927/2	_____	Flush	_____
GVA 225/500	SP 7927/2	_____	Flush	_____
GVA 225/550	SP 7927/1	_____	Flush	_____
GVA 225/600	SP 7927/3	_____	Flush	_____
GVA 225/625	SP 7927/3	_____	Flush	_____
GVA 225/650	SP 7927/1	SP 7926	Flush	Flush
GVA 225/675	SP 7927/1	SP 7926	Flush	Flush
GVA 225/700	SP 7927/3	SP 7926	Flush	Flush

- GVA 225/1000 B15
- GVA 225/1000 B15A
- GVA 225/1100 B16
- GVA 225/1100 B16A

These governors have operating lever and speed adjustment at right side when facing governor end of pump.

Illustration Number	Part Number	Quantity Required	Description of Parts
1	CV 7988A	1	COVER ASSEMBLY, end, consisting of end cover (this part not supplied separately), parts 3, 4 and dowel pin
2	*GA 7963	1	GASKET, end cover
9	WA 7915	4	WASHER, plain, end cover screw
10	WA 22-6 CA	4	WASHER, lock
11	SC 7955	4	SCREW, end cover fastening
26	SC 7927	4	SCREW, end cap fastening
27	WA 22-6 CA	4	WASHER, lock
28	WA 7915	4	WASHER, plain
29	CP 792	1	CAP, end
31	*GA 7964	1	GASKET, end cap
36	SP 7931A	1	SPRING, bumper
37	BK 7916	1	BRACKET, Bowden wire attachment
38	SC 7954	1	SCREW, Bowden wire clamping
39	WA 5-8 CA	1	WASHER, lock
40	NT 4-8 CA	1	NUT, clamping screw
41	SC 7953	2	SCREW, bracket fastening
42	WA 5-8 CA	2	WASHER, lock
43	CV 7967	1	COVER, top
44	*GA 7981	1	GASKET, top cover
48	WA 7915	4	WASHER, plain, top cover screw
49	WA 22-6 CA	4	WASHER, lock, top cover screw
50	SC 7952	4	SCREW, top cover fastening
65	PL 7919A	1	PLATE, stop (used on B15 and B15A governors only)
65	PL 7946A	1	PLATE, stop (used on B16 and B16A governors)
74		As required	SPRING, inner } for spring combinations, see
75		As required	SPRING, outer } table at end of list
88	GE 796	1	GEAR, driven
**	GE 7922A	1	GEAR ASSEMBLY, drive (not shown assembled-- includes parts 93-98)
97	GE 795	1	GEAR, drive
99	HG 7975	1	HOUSING
106	WA 7916	2	WASHER, plain, end cover screw

*Fast moving parts
 **Not shown assembled

AMERICAN BOSCH CORPORATION SPRINGFIELD, MASS., U.S.A.

Illustration Number	Part Number	Quantity Required	Description of Parts
107	WA 22-8 CA	2	WASHER, lock, end cover screw
111	SC 7961	1	SCREW, clamping, shutoff lever
112	SC 326-3 CA	1	SCREW, Bowden wire fastening
113	LE 7979A	1	LEVER, shutoff
114	NT 7919	1	NUT, clamping screw
115	*PN 2-20 CA	1	PIN, cotter, clamping screw
118	*PK 795	1	SEAL, oil
119	SC 7647	1	SCREW, inner stop lever fastening
120	SH 7919	1	SHAFT, shutoff lever
122	SR 7913	1	SPACER
123	LE 7945	1	LEVER, inner stop
124	SP 7944	1	SPRING, stop lever
128	PG 797	1	PLUG, closing

Governor spring combinations (parts 74 and 75)

Governor Type	Illustration 74 Inner Spring	Illustration 75 Outer Spring	Spring Spacing Adjustment	
			Inner	Outer
GVA 225/900 B15, B15A	SP 7927/1	SP 7926	Flush	Flush
GVA 225/900 B16, B16A	SP 7927/1	SP 7926/1	2 mm gap	Flush
GVA 225/1000 B15, B15A	SP 7927/7	SP 7926/2	3.5 mm gap	Flush
GVA 225/1100 B16, B16A	SP 7927/6	SP 7926/2	2.5 mm gap	Flush

(All other parts same as GVA .../... B1)

GVA .../... B18

GVA .../... B18A

GVA .../... B18S

These governors have operating lever and speed adjustment at right side when facing governor end of pump.

56			This part not used on these governors
57			This part not used on these governors
58			This part not used on these governors
59			This part not used on these governors
65			This part not used on these governors
66			This part not used on these governors
67			This part not used on these governors
74			This part not used on these governors
75		As required	SPRING, inner) for spring combination, see SPRING, outer) table at end of list
88	GE 796	1	
**	GE 7922A	1	GEAR, driven GEAR ASSEMBLY, drive (not shown assembled - includes parts 93-98)
97	GE 795	1	GEAR, drive
99	HG 7987	1	HOUSING, for B18
99	HG 79115	1	HOUSING, for B18A
99	HG 79123	1	HOUSING, for B18S
109	SC 7975	1	SCREW, housing mounting, for B18A and B18S
111	SC 7961	1	SCREW, clamping, shutoff lever
112	SC 326-3 CA	1	SCREW, Bowden wire fastening
113	LE 7979A	1	LEVER, shutoff
114	NT 7919	1	NUT, clamping screw
115	*PN 2-20 CA	1	PIN, cotter, clamping screw
116	*PN 3-20 CA	1	PIN, cotter, lever shaft retaining, used on B18S
117	WA 1146 CA	1	WASHER, plain, used on B18S
118	*PK 795	1	SEAL, oil
119	SC 7647	1	SCREW, inner stop lever fastening, used on B18 and B18A
120	SH 7919	1	SHAFT, stop lever, used on B18 and B18A

*Fast moving parts

**Not shown assembled

AMERICAN BOSCH CORPORATION, SPRINGFIELD, MASS., U.S.A.

Illustration Number	Part Number	Quantity Required	Description of Parts
120A	SH 7952	1	SHAFT, stop lever, used on B18S
121	BG 7922	1	BUSHING, stop lever shaft, (approx. 3/8" inside diameter) used on B18S
122	SR 7913	1	SPACER, used on B18 and B18A
122A	SR 7917	1	SPACER, used on B18S
123	LE 7945	1	LEVER, inner stop, used on B18 and B18A
123A	LE 7982	1	LEVER, inner stop, used on B18S
124	SP 7944	1	SPRING, stop lever
125	BG 7923	1	BUSHING, stop lever shaft, (approx. 21/64" inside diameter) used on B18S
126	WA 1241	1	WASHER, snap ring retaining, used on B18S
127	* WMR 2090/5X	1	RING, snap, used on B18S only
128	PG 797	1	PLUG, closing
**	BG 7619A	1	STOP ASSEMBLY, control rack, (includes parts 139 to 142)
139	BG 7618	1	BUSHING
140	PSR 10/LX	1	SCREW, adjusting
141	* CV 7645	1	COVER, neoprene
142	* NSP 4/5X	1	PIN, cotter

Governor spring combinations (parts 74 and 75)

Governor Type	Illustration 74 Inner Spring	Illustration 75 Outer Spring	Spring Spacing Adjustment	
			Inner	Outer
GVA 225/450 B18, B18S	_____	SP 7926/4	_____	Flush
GVA 225/500 B18, B18S	_____	SP 7926	_____	Flush
GVA 225/600 B (all)	SP 7927/4	_____	Flush	_____
GVA 225/650 B (all)	SP 7927/2	_____	Flush	_____
GVA 225/700 B18, B18S	SP 7927/2	_____	Flush	_____
GVA 225/725 B18S	SP 7927/1	_____	Flush	_____
GVA 225/750 B (all)	SP 7927/1	_____	Flush	_____
GVA 225/800 B (all)	SP 7927/3	_____	Flush	_____
GVA 225/850 B (all)	SP 7927/4	SP 7926/2	Flush	Flush
GVA 225/900 B (all)	SP 7927/1	SP 7926	Flush	Flush
GVA 225/950 B18, B18S	SP 7927/3	SP 7926	Flush	Flush
GVA 225/1000 B (all)	SP 7927/7	SP 7926/2	2.5 mm gap	Flush
GVA 225/1100 B (all)	SP 7927/6	SP 7926/2	2.5 mm gap	Flush

(All other parts same as GVA .../... B1)

- GVA .../... B19
- GVA .../... B19A
- GVA .../... B19B
- GVA .../... B19N
- GVA .../... B19BS
- GVA .../... B19NS
- GVA .../... B19S

These governors have operating lever and speed adjustment at left side when facing governor end of pump.

1	CV 7964A	1	COVER ASSEMBLY, end, consisting of end cover (this part not supplied separately), parts 3, 4, 7 and dowel pin
56			This part not used on these governors
57			This part not used on these governors
58			This part not used on these governors
59			This part not used on these governors
65			This part not used on these governors
66			This part not used on these governors
67			This part not used on these governors
68			This part not used on B19 and B19A governors

*Fast moving parts
 **Not shown assembled

Illustration Number	Part Number	Quantity Required	Description of Parts
69			This part not used on B19 and B19A governors SPRING, inner } for spring combinations, see SPRING, outer } table at end of list
74		As required	
75		As required	
88	GE 796	1	GEAR, driven
**	GE 7922A	1	GEAR ASSEMBLY, drive (not shown assembled, includes parts 93-98)
97	GE 795	1	GEAR, drive
99	HG 7987	1	HOUSING, for B19 and B19A
99	HG 79115	1	HOUSING, for B19B and B19N
99	HG 79123	1	HOUSING, for B19BS and B19NS and B19S
109	SC 7975	1	SCREW, housing mounting, for B19B, B19N, B19BS, B19NS and B19S
111	SC 7961	1	SCREW, clamping, shutoff lever
113	LE 7952	1	LEVER, shutoff
114	NT 7919	1	NUT, clamping screw
115	*PN 2-20 CA	1	NUT, cotter, clamping screw
116	*PN 3-20 CA	1	PIN, cotter, lever shaft retaining, used on B19BS, B19NS, B19S
117	WA 1146 CA	1	WASHER, plain
118	*PK 795	1	SEAL, oil
119	SC 7647	1	SCREW, inner stop lever fastening, used on B19, B19A, B19B and B19N
120	SH 7919	1	SHAFT, stop lever, used on B19, B19A, B19B and B19N
120A	H 7952	1	SHAFT, stop lever, used on B19BS, B19NS, B19S
121	BG 7922	1	BUSHING, stop lever shaft (approx. 3/8" inside diameter) used on B19BS, B19NS, B19S
122	SR 7913	1	SPACER, used on B19, B19A, B19B, B19N
122A	SR 7917	1	SPACER, used on B19BS, B19NS, B19S
123	LE 7945	1	LEVER, inner stop, used on B19, B19A, B19B and B19N
123A	LE 7982	1	LEVER, inner stop, used on B19BS, B19NS and B19S
124	SP 7944	1	SPRING, stop lever
125	BG 7923	1	BUSHING, stop lever shaft (approx. 21/64" inside diameter) used on B19BS, B19NS and B19S
126	WA 1241	1	WASHER, snap ring retaining, used on B19BS, B19NS and B19S
127	*WMR 2090/5X	1	RING, snap, used on B19BS, B19NS and B19S
128	PG 797	1	PLUG, closing
**	BG 7619A	1	STOP ASSEMBLY, control rack (includes parts 139 to 142) This assembly used on B19A, B19B and B19BS
139	BG 7618	1	BUSHING
140	PSR 10/LX	1	SCREW, adjusting
141	*CV 7645	1	COVER, neoprene
142	*NSP 4/5X	1	PIN, cotter
**	AS 791A	1	STOP ASSEMBLY, control rack (includes parts 143 to 152) This assembly used on B19, B19N, B19NS and B19S
143	BG 7914	1	BUSHING, stop
144	PN 7948	1	PLUNGER
145	SP 7955	1	SPRING
146	EPMU 5/LX	1	NUT, lock
147	BG 7913	1	BUSHING, guide
148	NBO 261/LX	1	PIN, linkage
149	LE 7962	1	LEVER, operating
150	NMS 8/LX	1	WASHER
151	*PN 1007	1	PIN, cotter

*Fast moving parts

**Not shown assembled

AMERICAN BOSCH CORPORATION, SPRINGFIELD, MASS., U.S.A.

Governor spring combinations (parts 74 and 75)

Governor Type	Illustration 74 Inner Spring	Illustration 75 Outer Spring	Spring Spacing Inner	Adjustment Outer
GVA 225/600 B (all)	SP 7927/4	_____	Flush	_____
GVA 225/700 B19A, B19B and B19BS	SP 7927/1	_____	Flush	_____
GVA 225/750 B (all)	SP 7927/1	_____	Flush	_____
GVA 225/800 B (all)	SP 7927/3	_____	Flush	_____
GVA 250/800 B (all)	SP 7927/3	_____	Flush	_____
GVA 225/850 B (all)	SP 7927/4	SP 7926/2	Flush	Flush
GVA 225/900 B (all)	SP 7927/1	SP 7926	Flush	Flush
GVA 250/900 B19N, B19NS and B19S	SP 7927/1	SP 7926	Flush	Flush
GVA 225/1000 B (all)	SP 7927/7	SP 7926/2	2.5 mm gap	Flush
GVA 225/1100 B (all)	SP 7927/6	SP 7926/2	2.5 mm gap	Flush

(All other parts same as GVA .../... B1)

- GVA .../... B20
- GVA .../... B21
- GVA .../... B21A
- GVA .../... B21N
- GVA .../... B22

These governors have operating lever and speed adjustment at right side facing governor end of pump.

Illustration Number	Part Number	Quantity Required	Description of Parts
1	CV 7990A	1	COVER ASSEMBLY, end, consisting of end cover (this part not supplied separately), parts 3, 4, 7 and dowel pin
7	FI 7628	1	PETCOCK, drain
36	SP 7931A	1	SPRING, bumper, used on B20, B21, B21A and B22
37	BK 7916	1	BRACKET, Bowden wire attachment
38	SC 7954	1	SCREW, Bowden wire clamping
39	WA 5-8 CA	1	WASHER, lock
40	NT 4-8 CA	1	NUT, clamping screw
41	SC 7953	2	SCREW, bracket fastening
42	WA 5-8 CA	2	WASHER, lock
65	PL 7919A	1	PLATE, stop, used on B20 and B22 (see service note at end of list)
65	PL 7946A	1	PLATE, stop, used on B21, B21A and B21N
65	PL 7964A	1	PLATE, stop, used on B20 and B22 (see service note at end of list)
69	PK 7918	1	BRIDGE, stop plate, used on B20 and B22
74		As required	SPRING, inner } for spring combinations,
75		As required	SPRING, outer } see table at end of list
88	GE 796	1	GEAR, driven
**	GE 7922A	1	GEAR ASSEMBLY, drive (not shown assembled, includes parts 93-98)
97	GE 795	1	GEAR, drive
99	HG 7987	1	HOUSING
111	SC 7961	1	SCREW, clamping, shutoff lever
112	SC 326-3 CA	1	SCREW, Bowden wire fastening, used on B20, B21, B21A and B21N
113	LE 7952	1	LEVER, shutoff, used on B20, B21, B21A and B21N
113	LE 7961	1	LEVER, shutoff, used on B22

**Not shown assembled

AMERICAN BOSCH CORPORATION SPRINGFIELD, MASS. U S A

Illustration Number	Part Number	Quantity Required	Description of Parts
114	NT 7919	1	NUT, clamping screw
115	*PN 2-20 CA	1	PIN, cotter, clamping screw
118	*PK 795	1	SEAL, oil
119	SC 7647	1	SCREW, inner stop lever fastening
120	SH 7919	1	SHAFT, stop lever
122	SR 7913	1	SPACER
123	LE 7945	1	LEVER, inner stop
124	SP 7944	1	SPRING, stop lever
128	PG 797	1	PLUG, closing

Governor spring combinations (parts 74 and 75)

Governor Type	Illustration 74 Inner Spring	Illustration 75 Outer Spring	Spring Spacing Inner	Adjustment Outer
GVA 225/900 B21, B21A and B21N	SP 7927/1	SP 7926/1	2.0 mm gap	Flush
GVA 225/900 B22	SP 7927/1	SP 7926	Flush	Flush
GVA 225/925 B21N	SP 7927/1	SP 7926/1	2 mm gap	Flush
GVA 225/1000 B20, B22	SP 7927/7	SP 7926/2	3.5 mm gap	Flush
GVA 225/1100 B21, B21A	SP 7927/6	SP 7926/2	2.5 mm gap	Flush

(Service note on part 65: the Mack Company has found it advisable to change some of the stop plates in the field on B20 governors, and has substituted plate, PL 7964A. Consequently whenever either of these type governors is brought to you for service, the original stop plate is to be retained or should replacement be necessary, the type PL 7964A is to be installed.)

(All other parts same as GVA .../... B1)

GVA .../... B24
GVA .../... B25
GVA .../... B25A

These governors have operating lever and speed adjustment at right side when facing governor end of pump.

1	CV 7990A	1	COVER ASSEMBLY, end, consisting of end cover (this part not supplied separately), parts 3, 4, 7 and dowel pin
7	FI 7628	1	PETCOCK, drain
36	SP 7931A	1	SPRING, bumper
37	BK 7916	1	BRACKET, Bowden wire attachment
38	SC 7954	1	SCREW, Bowden wire clamping
39	WA 5-8 CA	1	WASHER, lock
40	NT 4-8 CA	1	NUT, clamping screw
41	SC 7953	2	SCREW, bracket fastening
42	WA 5-8 CA	2	WASHER, lock
65	PL 7946A	1	PLATE, stop, used on B25 and B25A
65	PL 7964A	1	PLATE, stop, used on B24
69	BK 7918	1	BRIDGE, stop plate
74		As required	SPRING, inner } for spring combination, see
75		As required	SPRING, outer } table at end of list
88	GE 796	1	GEAR, driven
**	GE 7922A	1	GEAR ASSEMBLY, drive (not shown assembled - includes parts 93-98)
97	GE 795	1	GEAR, drive
99	HG 7987	1	HOUSING
111	SC 7961	1	SCREW, clamping shutoff lever
112	SC 326-3 CA	1	SCREW, Bowden wire fastening
113	LE 7979A	1	LEVER, shutoff
114	NT 7919	1	NUT, clamping screw

*Fast moving parts

**Not shown assembled

AMERICAN BOSCH CORPORATION SPRINGFIELD, MASS, U.S.A.

Illustration Number	Part Number	Quantity Required	Description of Parts
115	*PN 2-20 CA	1	PIN, cotter, clamping screw
118	*PK 795	1	SEAL, oil
119	SC 7647	1	SCREW, inner stop lever fastening
120	SH 7919	1	SHAFT, shutoff lever
122	SR 7913	1	SPACER
123	LE 7945	1	LEVER, inner stop
124	SP 7944	1	SPRING, inner stop lever
128	PG 797	1	PLUG, closing

Governor spring combinations (parts 74 and 75)

Governor Type	Illustration 74 Inner Spring	Illustration 75 Outer Spring	Spring Spacing Adjustment Inner	Spring Spacing Adjustment Outer
GVA 225/900B	SP 7927/5	SP 7926/4	7 mm gap	1 mm pre-compressed

(All other parts same as GVA .../... B1)

- GVA .../... B27
- GVA .../... B27A
- GVA .../... B27S

These governors have operating lever at left side and speed adjustment at right side when facing governor end of pump.

22	LE 7973	1	LEVER, operating
56			This part not used on these governors
57			This part not used on these governors
58			This part not used on these governors
59			This part not used on these governors
65			This part not used on these governors
66			This part not used on these governors
67			This part not used on these governors
68			This part not used on these governors
69			This part not used on B27 governor
74			This part not used on B27 governor
75		As required	SPRING, inner } for spring combinations,
		As required	SPRING, outer } see table at end of list
88	GE 796	1	GEAR, driven
**	GE 7922A	1	GEAR ASSEMBLY, drive (not shown assembled- includes parts 93-98)
97	GE 795	1	GEAR, drive
99	HG 7987	1	HOUSING, used on B27
99	HG 79115	1	HOUSING, used on B27A
99	HG 79123	1	HOUSING, used on B27S
109	SC 7975	1	SCREW, housing mounting, used on B27A and B27S
111	SC 7961	1	SCREW, clamping, shutoff lever
112	SC 326-3 CA	1	SCREW, Bowden wire fastening
113	LE 7979A	1	LEVER, shutoff
114	NT 7919	1	NUT, clamping screw
115	*PN 2-20 CA	1	PIN, cotter, clamping screw
116	*PN 3-20 CA	1	PIN, cotter, lever shaft retaining, used on B27S
117	WA 1146 CA	1	WASHER, plain, used on B27S
118	*PK 795	1	SEAL, oil
119	SC 7647	1	SCREW, inner stop lever fastening, used on B27 and B27A
120	SH 7919	1	SHAFT, shutoff lever, used on B27 and B27A
120A	SH 7952	1	SHAFT, shutoff lever, used on B27S

*Fast moving parts
 **Not shown assembled

AMERICAN BOSCH CORPORATION SPRINGFIELD MASS U.S.A

Illustration Number	Part Number	Quantity Required	Description of Parts
121	BG 7922	1	BUSHING, shutoff lever shaft, used on B27S (approx. 3/8" inside diameter)
122	SR 7913	1	SPACER, used on B27 and B27A
122A	SR 7917	1	SPACER, used on B27S
123	LE 7945	1	LEVER, inner, stop, used on B27 and B27A
123A	LE 7982	1	LEVER, inner, stop, used on B27S
124	SP 7944	1	SPRING, stop lever
125	BG 7923	1	BUSHING, shutoff lever shaft, used on B27S (approx. 21/64" inside diameter)
126	WA 1241	1	WASHER, snap ring retaining, used on B27S
127	* WMR 2090/5X	1	RING, stop, used on B27S
128	PG 797	1	PLUG, closing
**	EPHV 1/1Z	1	STOP ASSEMBLY, control rack - includes parts 129-138
129	EPMB 6/1X	1	BUSHING
130	EPBO 14/1X	1	PIN, stop
131	WSF 2291/4X	1	SPRING
132	EPMR 5/1X	1	WASHER
133	EPMU 5/1X	1	NUT
134	EPMB 5/1X	1	BUSHING, guide
135	NBO 261/1X	1	PIN, linkage
136	EPHE 10/1X	1	LEVER, operating
137	WMS 2140/24X	1	WASHER
138	* FN 1007	1	PIN, cotter

Governor spring combinations (parts 74 and 75)

Governor Type	Illustration 74 Inner Spring	Illustration 75 Outer Spring	Spring Spacing Adjustment Inner	Spring Spacing Adjustment Outer
GVA 225/600	SP 7927/4	_____	Flush	_____
GVA 225/750	SP 7927/1	_____	Flush	_____
GVA 225/800	SP 7927/3	_____	Flush	_____
GVA 225/850	SP 7927/4	SP 7926/2	Flush	Flush
GVA 225/900	SP 7927/1	SP 7926	Flush	Flush
GVA 225/1000	SP 7927/7	SP 7926/2	2.5 mm gap	Flush
GVA 225/1100	SP 7927/6	SP 7926/2	2.5 mm gap	Flush

(All other parts same as GVA .../... B1)

GVA .../... B28

This governor has operating lever and speed adjustment at right side when facing governor end of pump.

1	CV 7990A	1	COVER ASSEMBLY, end, consisting of end cover (this part not supplied separately), parts 3, 4, 7 and dowel pin
7	FI 7628	1	PETCOCK, drain
36	SP 7931A	1	SPRING, bumper
37	BK 7916	1	BRACKET, Bowden wire attachment
38	SC 7954	1	SCREW, clamping, Bowden wire
39	WA 5-8 CA	1	WASHER, lock
40	NT 4-8 CA	1	NUT, clamping screw
41	SC 7953	2	SCREW, bracket fastening
42	WA 5-8 CA	2	WASHER, lock
65	PL 7946A	1	PLATE, stop
74		As required	SPRING, inner } for spring combination,
75		As required	SPRING, outer } see table at end of list
88	GE 796	1	GEAR, driven
**	GE 7922A	1	GEAR ASSEMBLY, drive (not shown assembled - includes parts 93-98)

*Fast moving parts
**Not shown assembled

AMERICAN BOSCH CORPORATION, SPRINGFIELD, MASS., U.S.A.

Illustration Number	Part Number	Quantity Required	Description of Parts
97	GE 795	1	GEAR, drive
99	HG 7987	1	HOUSING
111	SC 7961	1	SCREW, clamping, shutoff lever
113	LE 7961	1	LEVER, shutoff
114	NT 7919	1	NUT, clamping screw
115	*PN 2-20 CA	1	PIN, cotter, clamping screw
118	*PK 795	1	SEAL, oil
119	SC 7647	1	SCREW, inner stop lever fastening
120	SH 7919	1	SHAFT, shutoff lever
122	SR 7913	1	SPACER
123	LE 7945	1	LEVER, inner stop
124	SP 7944	1	SPRING, stop lever
128	PG 797	1	PLUG, closing

Governor spring combinations (parts 74 and 75)

Governor Type	Illustration 74 Inner Spring	Illustration 75 Outer Spring	Spring Spacing Adjustment Inner	Spring Spacing Adjustment Outer
GVA 225/1100	SP 7927/6	SP 7926/2	2.5 mm gap	Flush

(All other parts same as GVA .../... B1)

GVA .../... B29
GVA .../... B29S

These governors have operating lever at right side and speed adjustment at left side when facing governor end of pump.

1	CV 79109A	1	COVER ASSEMBLY, end, consisting of end cover (this part not supplied separately), parts 3, 4, 7, 8 and dowel pin
8	GA 7996	1	GASKET, drain plug
22	LE 7952	1	LEVER, operating
56			This part not used on these governors
57			This part not used on these governors
58			This part not used on these governors
59			This part not used on these governors
65			This part not used on these governors
66			This part not used on these governors
67			This part not used on these governors
74		As required	SPRING, inner } for spring combinations,
75		As required	SPRING, outer } see table at end of list
88	GE 796	1	GEAR, driven
**	GE 7922A	1	GEAR ASSEMBLY, drive (not shown assembled - includes parts 93-98)
97	GE 795	1	GEAR, drive
99	HG 79115	1	HOUSING, used on B29
99	HG 79123	1	HOUSING, used on B29S
109	SC 7975	1	SCREW, housing mounting
111	SC 7961	1	SCREW, clamping, shutoff lever
113	LE 7978	1	LEVER, shutoff
114	NT 7919	1	NUT, clamping screw
115	*PN 2-20 CA	1	PIN, cotter, clamping screw
116	*PN 3-20 CA	1	PIN, cotter, lever shaft retaining, used on B29S
117	WA 1303	1	WASHER, plain, used on B29S
118	*PK 795	1	SEAL, oil
119	SC 7647	1	SCREW, stop lever fastening, used on B29
120	SH 7919	1	SHAFT, shutoff lever, used on B29
120A	SH 7952	1	SHAFT, shutoff lever, used on B29S

*Fast moving parts
**Not shown assembled

AMERICAN BOSCH CORPORATION SPRINGFIELD MASS U S A

Illustration Number	Part Number	Quantity Required	Description of Parts
121	BG 7922	1	BUSHING (approx. 3/8" inside diameter) used on B29S
122	SR 7913	1	SPACER, used on B29
122A	SR 7917	1	SPACER, used on B29S
123	LE 7945	1	LEVER, inner stop, used on B29
123A	LE 7982	1	LEVER, inner stop, used on B29S
124	SP 7944	1	SPRING, stop lever
125	BG 7923	1	BUSHING (approx. 21/64" inside diameter) used on B29S
126	WA 1241	1	WASHER, snap ring retaining, used on B29S
127	WMR 2090/5X	1	RING, snap, used on B29S
128	PG 797	1	PLUG, closing
**	BG 7619A	1	STOP ASSEMBLY, control rack (includes parts 139-142)
139	BG 761	1	BUSHING
140	PSR 101X	1	SCREW, adjusting
141	*CV 7645	1	COVER, neoprene
142	*NSP 4/5X	1	PIN, cotter

Governor spring combinations (parts 74 and 75)

Governor Type	Illustration 74 Inner Spring	Illustration 75 Outer Spring	Spring Spacing Adjustment	
			Inner	Outer
GVA 225/600	SP 7927/4	_____	Flush	_____
GVA 225/700	SP 7927/1	=====	Flush	=====
GVA 225/750	SP 7927/1	=====	Flush	=====
GVA 225/800	SP 7927/3	=====	Flush	=====
GVA 250/800	SP 7927/3	=====	Flush	=====
GVA 225/850	SP 7927/4	SP 7926/2	Flush	Flush
GVA 225/900	SP 7927/1	SP 7926	Flush	Flush
GVA 225/1000	SP 7927/7	SP 7926/2	2.5 mm gap	Flush
GVA 225/1100	SP 7927/6	SP 7926/2	2.5 mm gap	Flush

(All other parts same as GVA .../... B1)

GVA.../... B31
GVA.../... B31S

These governors have operating lever and speed adjustment on right side when facing governor end of pump.

56			This part not used on these governors
57			This part not used on these governors
58			This part not used on these governors
59			This part not used on these governors
65			This part not used on these governors
66			This part not used on these governors
67			This part not used on these governors
74			This part not used on these governors
75		As required	SPRING, inner } for spring combination,
88	GE 7942	As required	SPRING, outer } see table at end of list
**	GE 7940A	1	GEAR, driven
94	WA 7918	1	GEAR ASSEMBLY, drive (not shown assembled- includes parts 93-98)
95	DC 792	1	WASHER, lock drive gear nut
95	DC 795	1	DISC, spring, inner
97	GE 7941	1	DISC, spring, outer
98	HB 7914	1	GEAR, drive
99	HG 7987	1	HUB, gear
99	HG 79123	1	HOUSING, used on B31
		1	HOUSING, used on B31S

*Fast moving parts
**Not shown assembled

AMERICAN BOSCH CORPORATION, SPRINGFIELD, MASS., U.S.A.

Illustration Number	Part Number	Quantity Required	Description of Parts
109	SC 7975	1	SCREW, housing mounting, used on B31
111	SC 7961	1	SCREW, clamping, shutoff lever
112	SC 326-3 CA	1	SCREW, Bowden wire fastening
113	LE 7979A	1	LEVER, shutoff
114	NT 7919	1	NUT, clamping screw
115	*PN 2-20 CA	1	PIN, cotter, clamping screw
116	*PN 3-20 CA	1	PIN, cotter, lever shaft retaining, used on B31S
117	WA 1146 CA	1	WASHER, plain, used on B31S
118	*PK 795	1	SEAL, oil
119	SC 7647	1	SCREW, inner stop lever fastening, used on B31
120	SH 7919	1	SHAFT, shutoff lever, used on B31
120A	SH 7952	1	SHAFT, shutoff lever, used on B31S
121	BG 7922	1	BUSHING (approx. 3/3" inside diameter) used on B31S
122	SR 7913	1	SPACER, used on B31
122A	SR 7917	1	SPACER, used on B31S
123	LE 7945	1	LEVER, inner stop, used on B31
123A	LE 7982	1	LEVER, inner, stop, used on B31S
124	SP 7944	1	SPRING, stop lever
125	BG 7923	1	BUSHING (approx. 21/64" inside diameter) used on B31S
126	WA 1241	1	WASHER, snap ring retaining, used on B31S
127	WMR 2090/5X	1	RING, snap, used on B31S
129	PG 797	1	PLUG, closing
**	BG 7619A	1	STOP ASSEMBLY, control rack, includes parts 139-142
139	BG 7618	1	BUSHING
140	PSR 10/1X	1	SCREW, adjusting
141	*CV 7645	1	COVER, neoprene
142	*NSP 4/5X	1	PIN, cotter

Governor spring combinations (parts 74 and 75)

Governor Type	Illustration 74 Inner Spring	Illustration 75 Outer Spring	Spring Spacing Adjustment	
			Inner	Outer
GVA 450/1400	SP 7927/3	SP 7926	Flush	Flush

(All other parts same as GVA .../... B1)

- GVA .../... B32S
- GVA .../... B33S
- GVA .../... B34S
- GVA .../... B35S
- GVA .../... B38S

The B32S governor has operating lever and speed adjustment at left side; the B33S, B34S, B35S and B38S governors have operating lever and speed adjustment at right side when facing governor end of pump.

1	CV 79131A	1	COVER ASSEMBLY, end, consisting of end cover (this part not supplied separately), parts 3, 4, 7, 8, dowel pin and overflow petcock (used on B32S)
1	CV 79155A	1	COVER ASSEMBLY, end, consisting of end cover (this part not supplied separately), parts 3, 4, 7 and dowel pin (used on B33S, B34S and B38S)
1	CV 79138-1A	1	COVER ASSEMBLY, end, consisting of end cover (this part not supplied separately), parts 3, 4, 7, dowel pin and overflow petcock (used on B35S)

*Fast moving parts **Not shown assembled

AMERICAN BOSCH CORPORATION, SPRINGFIELD, MASS., U.S.A.

Illustration Number	Part Number	Quantity Required	Description of Parts
5	IF 767	1	PLATE, oil drain-used on B33S, B34S, B35S and B38S
6	SC 150-2	2	RIVET, plate fastening - used on B33S, B35S and B38S
7	FI 7628	1	PETCOCK, drain - used on B33S, B34S, B35S, and B38S
**	IF 766	1	PLATE, oil level - used on B35S
**	SC 150-2	2	RIVET, plate fastening - used on B35S
**	FI 765	1	PETCOCK, overflow - used on B35S
8	*GA 7996	1	GASKET, drain plug - used on B32S
22	LE 7980	1	LEVER, operating - used on B32S
36	SP 7931A	1	SPRING, bumper - used on B33S and B34S
37	BK 7916	1	BRACKET, Bowden wire attachment - used on B33S, B34S and B38S
38	SC 7954	1	SCREW, clamping, Bowden wire - used on B33S, B34S and B38S
39	WA 5-8 CA	1	WASHER, lock - used on B33S, B34S and B38S
40	NT 4-8 CA	1	NUT, clamping screw - used on B33S, B34S and B38S
41	SC 7953	2	SCREW, bracket fastening - used on B33S, B34S and B38S
42	WA 5-8 CA	2	WASHER, lock
56			This part not used on B32S and B35S
57			This part not used on B32S and B35S
58			This part not used on B32S and B35S
59			This part not used on B32S and B35S
65	PL 7946A	1	PLATE, stop - used on B34S and B38S
65	PL 7964A	1	PLATE, stop - used on B33S
65			This part not used on B32S and B35S
66			This part not used on B32S and B35S
67			This part not used on B32S and B35S
69	BK 7918	1	BRIDGE, stop plate - used on B33S
74		As required	SPRING, inner } for spring combinations,
75		As required	SPRING, outer } see table at end of list
88	GE 796	1	GEAR, driven - used on B33S, B34S, B35S and B38S
88	GE 7942	1	GEAR, driven - used on B32S
**	GE 7922-1A	1	GEAR ASSEMBLY, drive (not shown assembled - includes parts 93-98) used on B33S, B34S, B35S and B38S
**	GE 7940A	1	GEAR ASSEMBLY, drive (not shown assembled - includes parts 93-98) used on B32S
94	WA 7913	1	WASHER, lock, drive gear nut - used on B32S
95	DC 792	1	DISC, spring, inner - used on B32S
95	DC 795	1	DISC, spring, outer - used on B32S
97	GE 795	1	GEAR, drive - used on B33S, B34S, B35S and B38S
97	GE 7941	1	GEAR, drive - used on B32S
98	HB 797-1	1	HUB, drive gear - used on B33S, B34S, B35S and B38S
98	HB 7914	1	HUB, drive gear - used on B32S
99	HG 79128	1	HOUSING, used on B32S and B35S
99	HG 79132	1	HOUSING, used on B33S and B34S
99	HG 79150	1	HOUSING, used on B38S
101	*PK 764	1	SEAL, oil, camshaft
103	IF 766	1	PLATE, oil level - used on B33S, B34S and B38S
104	SC 150-2	2	RIVET, plate fastening
105	FI 765	1	PETCOCK, overflow - used on B33S, B34S and B38S

*Fast moving parts

**Not shown assembled

AMERICAN BOSCH CORPORATION, SPRINGFIELD, MASS., U.S.A.

Illustration Number	Part Number	Quantity Required	Description of Parts
109	SC 7975	1	SCREW, housing mounting - used on B32S
111	SC 7961	1	SCREW, clamping, shutoff lever
113	LE 7952	1	LEVER, shutoff - used on B32S and B35S
113	LE 7961	1	LEVER, shutoff - used on B33S, B34S and B38S
114	NT 7919	1	NUT, clamping screw
115	*PN 2-20 CA	1	PIN, cotter, clamping screw
116	*PN 3-20 CA	1	PIN, cotter, lever shaft retaining
117	WA 1303	1	WASHER, plain
118	*PK 795	1	SEAL, oil
120A	SH 7952	1	SHAFT, shutoff lever
121	BG 7922	1	BUSHING (approx. 3/8" inside diameter)
122A	SR 7917	1	SPACER
123A	LE 7982	1	LEVER, inner stop
124	SP 7944	1	SPRING, stop lever
125	BG 7923	1	BUSHING (approx. 21/64" inside diameter)
126	WA 1241	1	WASHER, snap ring retaining
127	*WMR 2090/5X	1	RING, snap
128	PG 797	1	PLUG, closing
**	NP 7618	1	PLATE, lubrication instruction
**	SC 150-2	2	RIVET, plate fastening
**	BG 7619A	1	STOP ASSEMBLY, control rack (includes parts 139-142) used on B32S and B35S
139	BG 7618	1	BUSHING
140	PSR 10/1X	1	SCREW, adjusting
141	*CV 7645	1	COVER, neoprene
142	*NSP 4/5X	1	PIN, cotter

Governor spring combinations (parts 74 and 75)

Governor Type	Illustration 74 Inner Spring	Illustration 75 Outer Spring	Spring Spacing Adjustment Inner	Spring Spacing Adjustment Outer
GVA 225/450 B35S	_____	SP 7926/4	_____	Flush
GVA 225/500 B35S	_____	SP 7926	_____	Flush
GVA 225/600 B35S	SP 7927/4	_____	Flush	_____
GVA 225/650 B35S	SP 7927/2	_____	Flush	_____
GVA 225/700 B35S	SP 7927/2	_____	Flush	_____
GVA 225/725 B35S	SP 7927/1	_____	Flush	_____
GVA 225/750 B35S	SP 7927/1	_____	Flush	_____
GVA 225/800 B35S	SP 7927/3	_____	Flush	_____
GVA 225/850 B35S	SP 7927/4	SP 7926/2	Flush	Flush
GVA 225/900 B35S and B35S	SP 7927/1	SP 7926	Flush	Flush
GVA 225/900 B38S	SP 7927/1	SP 7926/1	2 mm gap	Flush
GVA 225/950 B35S	SP 7927/3	SP 7926	Flush	Flush
GVA 225/1000 B33S	SP 7927/7	SP 7926/2	3.5 mm gap	Flush
GVA 225/1000 B35S	SP 7927/7	SP 7926/2	2.5 mm gap	Flush
GVA 225/1100 B34S, B35S and B38S	SP 7927/6	SP 7926/2	2.5 mm gap	Flush
GVA 300/1300 B32S	SP 7927/18	SP 7926/2	1.5 mm gap	Flush

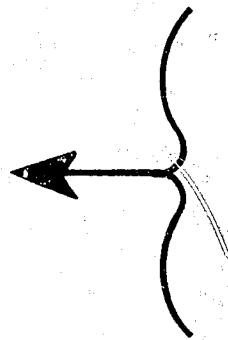
(All other parts same as GVA .../... B1)

*Fast moving parts
 **Not shown assembled

GOVERNOR NOMENCLATURE

Illustration Number	Description of Parts	Illustration Number	Description of Parts
1.	COVER ASSEMBLY	67.	WASHER, plain
2.	GASKET, end cover	68.	SCREW, stop plate bridge fastening
3.	SEAL, oil	69.	BRIDGE, stop plate
4.	BUSHING	70.	NUT, spring seat
5.	PLATE, oil drain	71.	WASHER, star
6.	RIVET, plate fastening	72.	SEAT, spring
7.	PLUG, drain	73.	SPACER, outer spring
8.	GASKET, drain plug	74.	SPRING, inner governor
9.	WASHER, plain end cover screw	75.	SPRING, outer governor
10.	WASHER, lock, end cover screw	76.	SPACER, inner spring
11.	SCREW, end cover fastening	77.	SLEEVE ASSEMBLY
12.	FLANGE, stop	78.	SHAFT, weight
13.	SCREW, stop flange fastening	79.	WEIGHT
14.	SCREW, stop adjustment	80.	BEARING, needle
15.	NUT, lock, adjustment screw	81.	PIN, (short) weight nose bearing
16.	COVER, stop flange	82.	PIN, (long) weight pivot
17.	PLATE, stop flange	83.	PLATE, bearing
18.	SCREW, flange cover and plate fastening	84.	BEARING, ball
19.	WASHER, lock plate screw	85.	BRIDGE, bearing
20.	SHAFT, operating lever	86.	SCREW, bearing bridge fastening
21.	SCREW, spring hub fastening	87.	SCREW, bearing plate fastening
22.	LEVER, operating	88.	GEAR, driven
23.	SCREW, clamping	89.	WASHER, star
24.	NUT, clamping screw	90.	NUT, gear retaining
25.	PIN, cotter	91.	NUT, camshaft
26.	SCREW, end cap fastening	92.	WASHER, lock
27.	WASHER, lock	93.	NUT, drive gear fastening
28.	WASHER, plain	94.	WASHER, lock, drive gear nut
29.	CAP, end	95.	DISC, spring
30.	BEARING, ball	96.	SPACER, drive gear
31.	GASKET, end cap	97.	GEAR, drive
32.	CAP, bumper spring adjusting screw	98.	HUB, drive gear
33.	SCREW, bumper spring adjusting	99.	HOUSING
34.	GASKET, bumper spring cap	100.	GASKET, housing
35.	NUT, lock, adjustment screw	101.	SEAL, oil, camshaft
36.	SPRING, bumper	102.	SCREW, housing mounting
37.	BRACKET, Bowden wire attachment	103.	PLATE, oil level
38.	SCREW, clamping, Bowden wire	104.	RIVET, plate fastening
39.	WASHER, lock	105.	PETCOCK, oil level
40.	NUT, clamping screw	106.	WASHER, gasket, end cover screw
41.	SCREW, bracket fastening	107.	WASHER, plain, end cover screw
42.	WASHER, lock	108.	SCREW, end cover fastening
43.	COVER, top	109.	SCREW, housing mounting
44.	GASKET, top cover	110.	PLUG, housing mounting
45.	PLATE, name	111.	SCREW, clamping, shutoff lever
46.	RIVET, plate fastening	112.	SCREW, Bowden wire fastening
47.	CAP, breather	113.	LEVER, shutoff
48.	WASHER, plain top cover screw	114.	NUT, clamping screw
49.	WASHER, lock, top cover screw	115.	PIN, cotter, clamping screw
50.	SCREW, top cover fastening	116.	PIN, cotter, shaft retaining
51.	YOKE ASSEMBLY, fulcrum	117.	WASHER, plain
52.	HUB, spring	118.	SEAL, oil
53.	SPRING, operating lever	119.	SCREW, inner stop lever fastening
54.	SCREW, pivot	120.	SHAFT, shutoff lever
55.	WASHER, lock, pivot screw	120A	SHAFT, shutoff lever (serrated type)
56.	CAM, stop	121.	BUSHING, shutoff lever shaft
57.	SCREW, stop cam fastening	122.	SPACER, (for plain type)
58.	WASHER, lock, stop cam screw	122A	SPACER, (for serrated type)
59.	NUT, stop cam screw	123.	LEVER, inner stop
60.	PIN, linkage	123A	LEVER, inner stop (serrated type)
61.	WASHER, lock, linkage pin	124.	SPRING, shutoff lever
62.	ARM, extension	125.	BUSHING, shutoff lever
63.	WASHER, lock, control rack screw	126.	WASHER, spring ring retaining
64.	SCREW, control rack fastening	127.	RING, spring
65.	PLATE, stop	128.	END CAP, shutoff lever
66.	NUT, stop plate adjusting		

AMERICAN BOSCH CORPORATION, SPRINGFIELD, MASS., U. S. A.

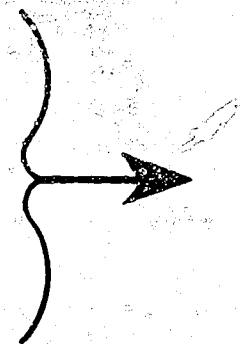


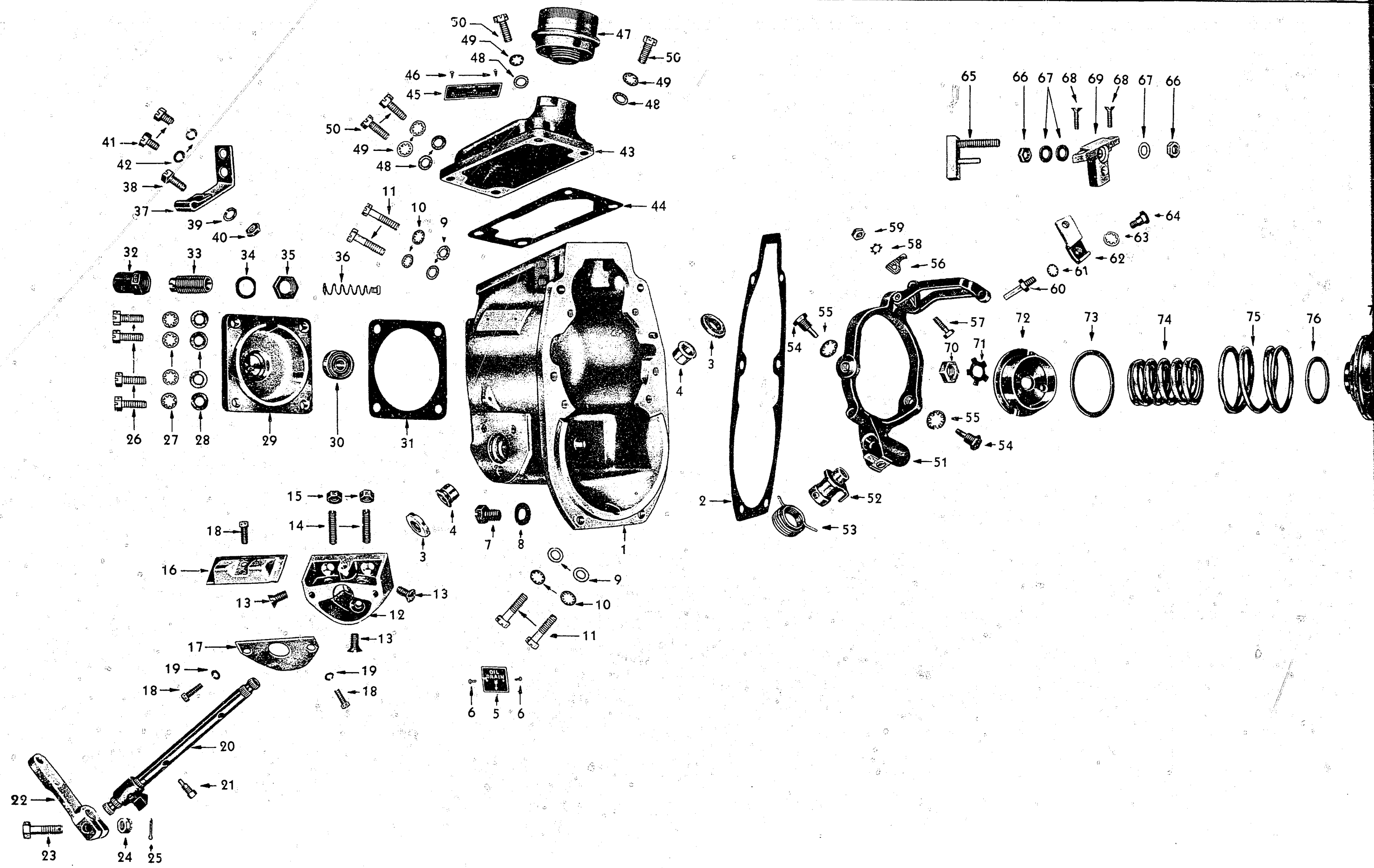
GVA . . . / . . . B

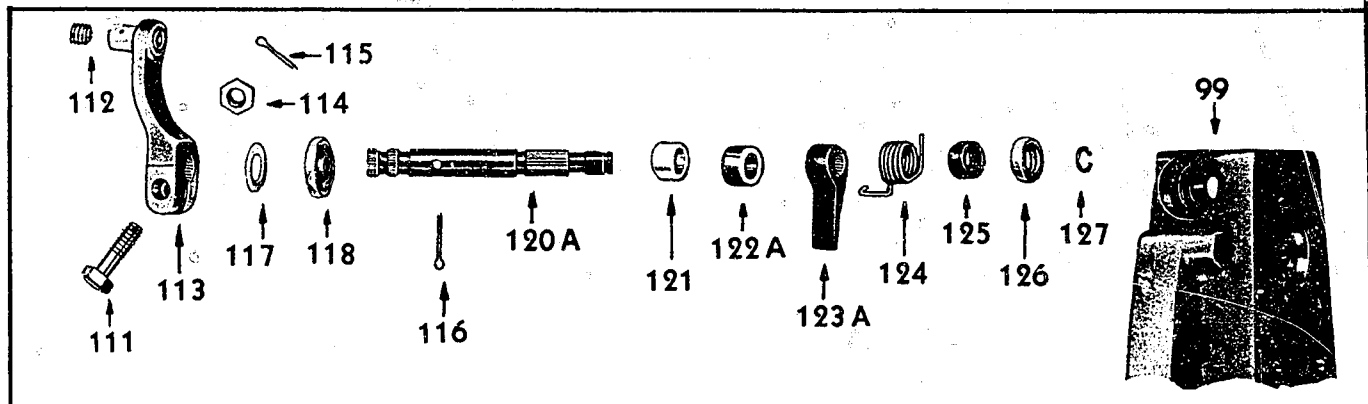
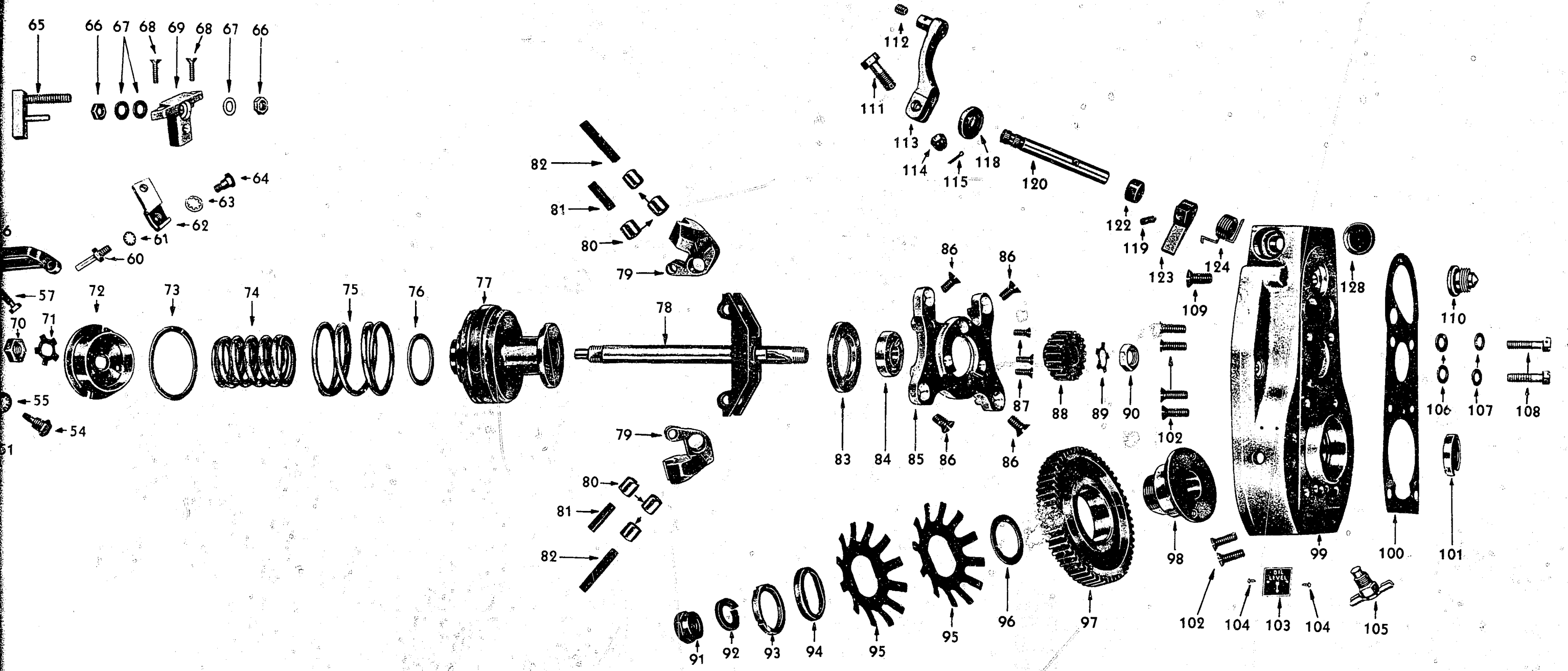
GOVERNOR

ILLUSTRATION

**AS 791A
BG 7619A
EPHV 1/1Z
CONTROL RACK STOP
ILLUSTRATIONS**







CONTROL RACK STOP ILLUSTRATIONS →